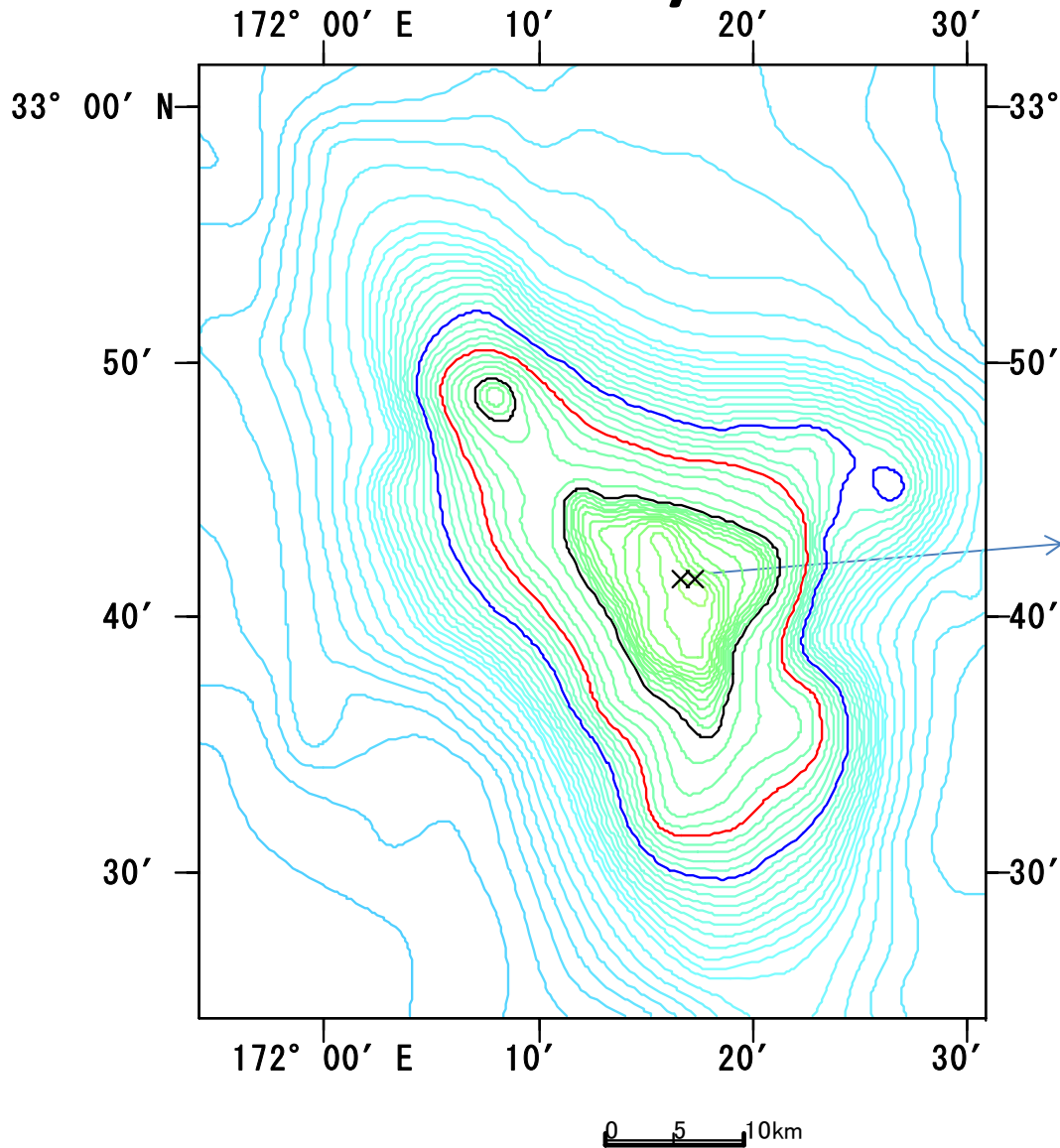


# Yuryaku Seamount



St23 2008/8/4  
32-41.47N, 172-17.28E  
410.26m

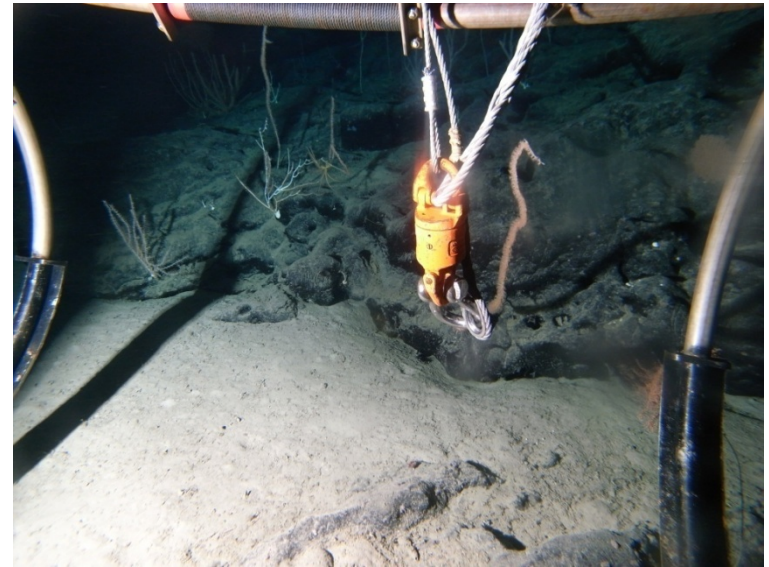


Depth Line  
Black: 1000m  
Red: 1500m  
Blue: 2000m

# Koko Seamount 1

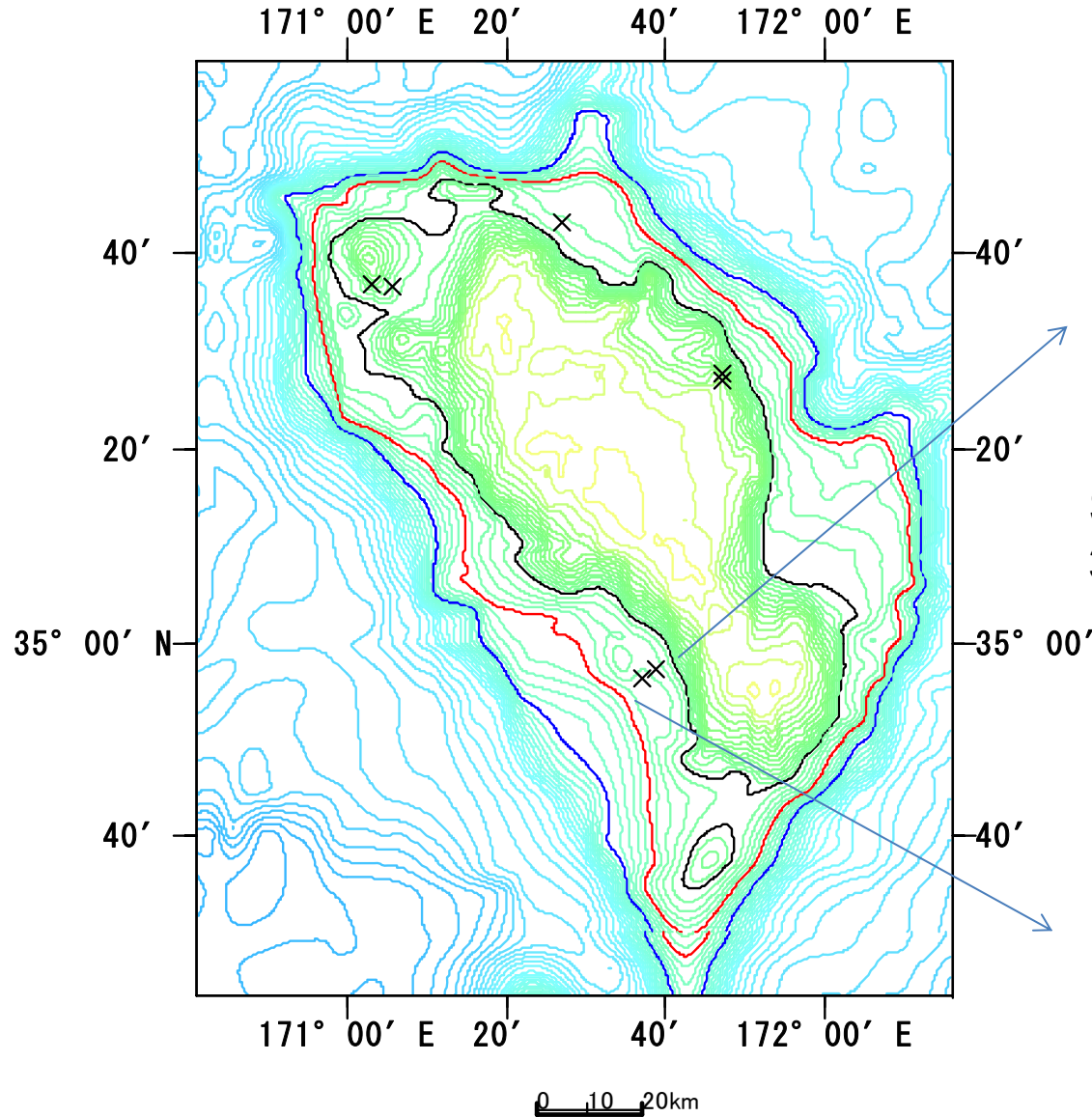
St25 2008/8/5

34-56.24N, 171-36.98E, 1082.58m



St24 2008/8/5

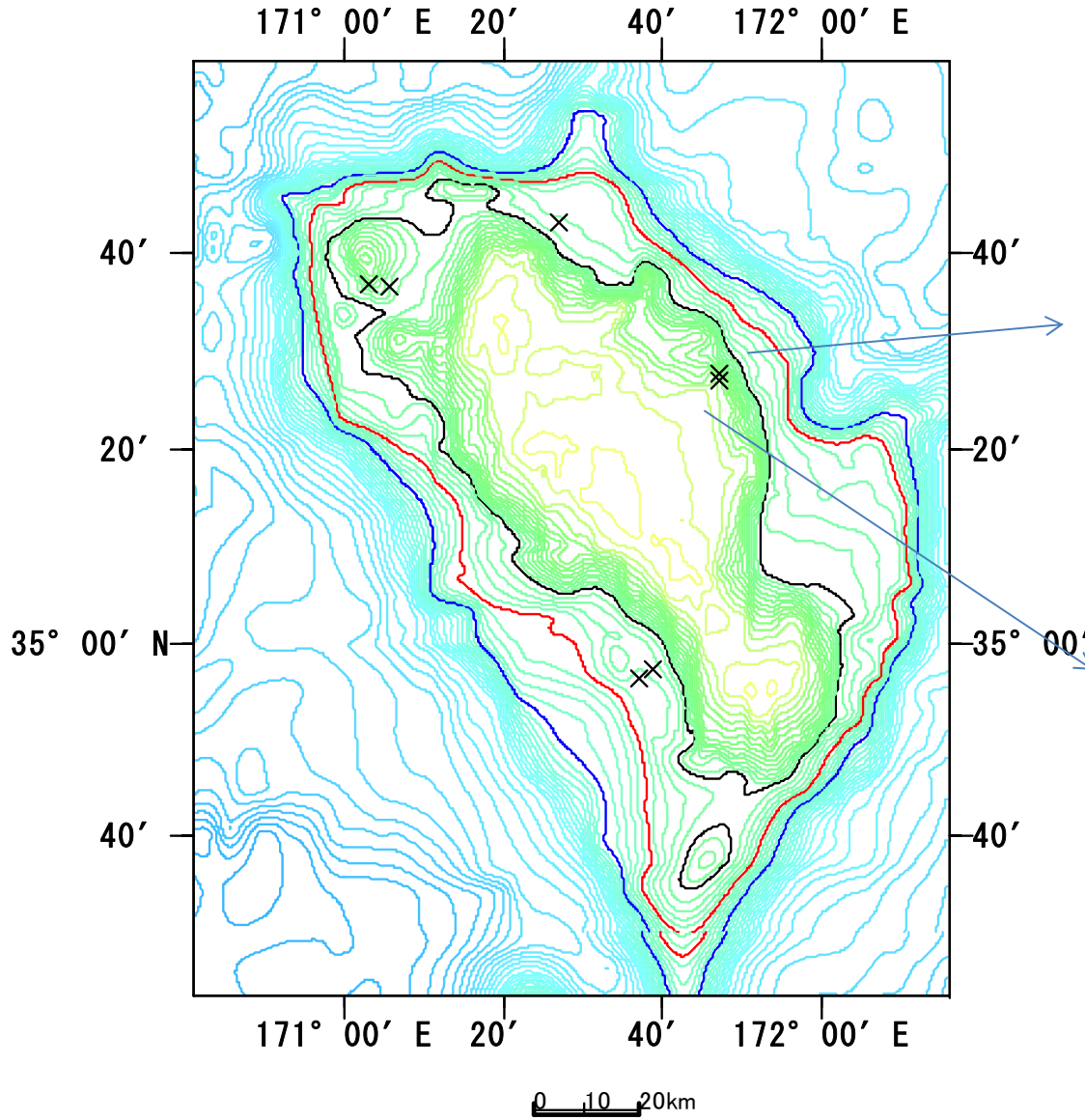
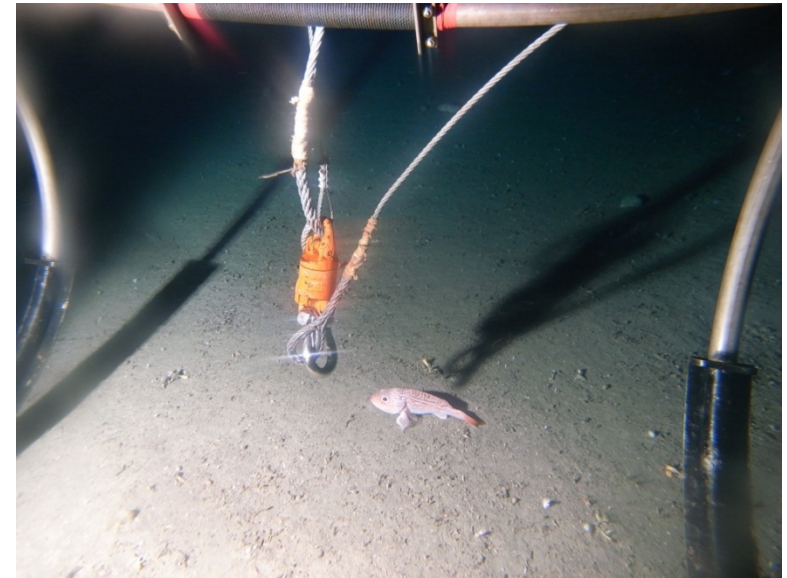
34-57.35N, 171-38.83E, 1299.44m



# Koko Seamount 2

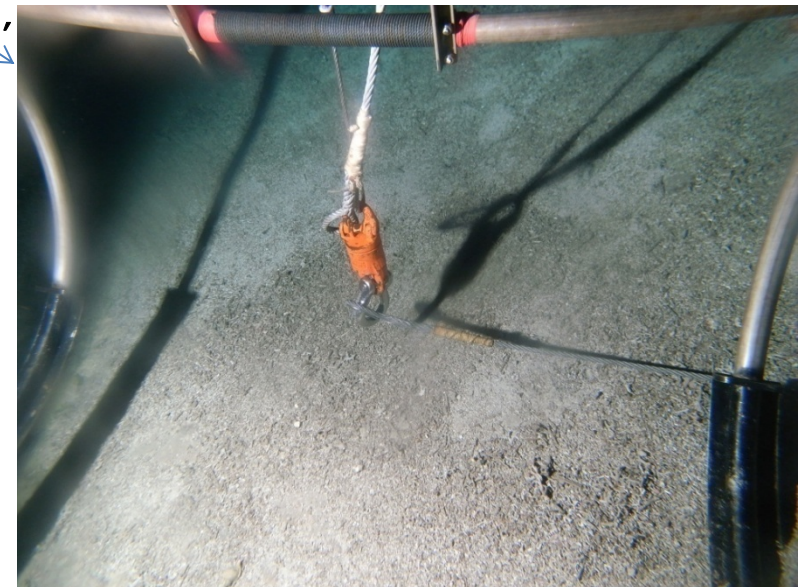
St28 2008/8/6

34-56.24N, 171-36.98E, 1082.58m

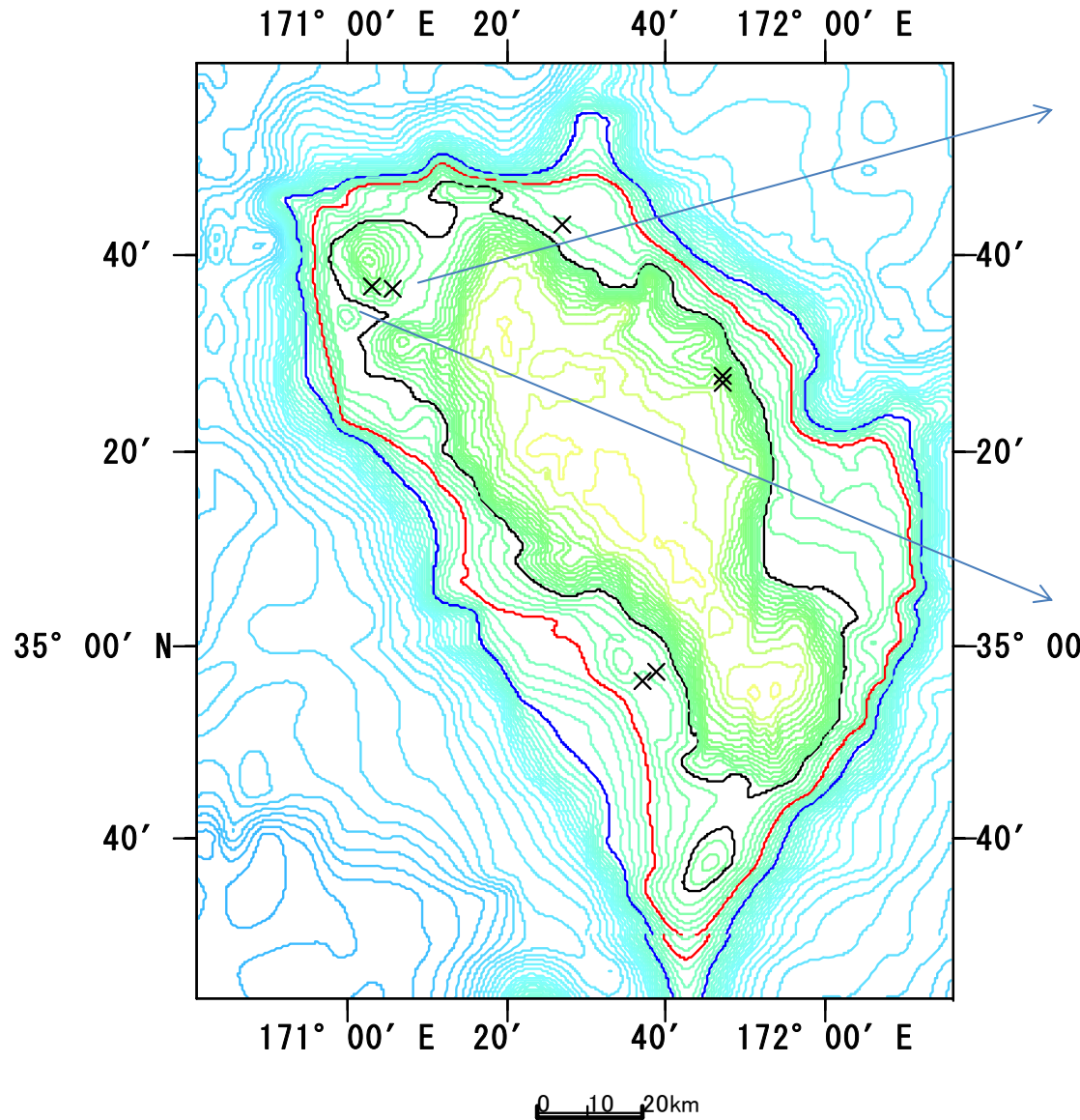


St27 2008/8/6

35-26.99N, 171-47.10E, 415.82 m



# Koko Seamount 3



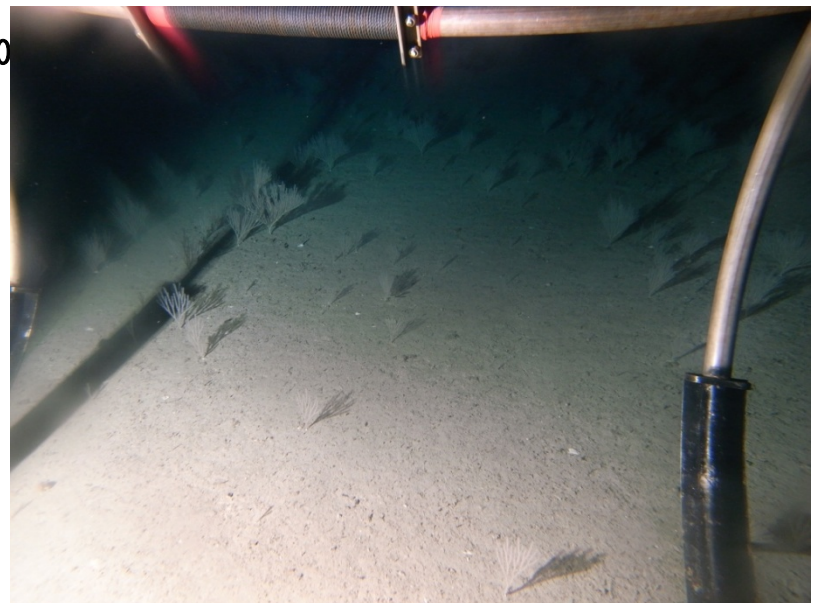
St30 2008/8/7

35-36.56N, 171-05.53E, 645.19m



St29 2008/8/7

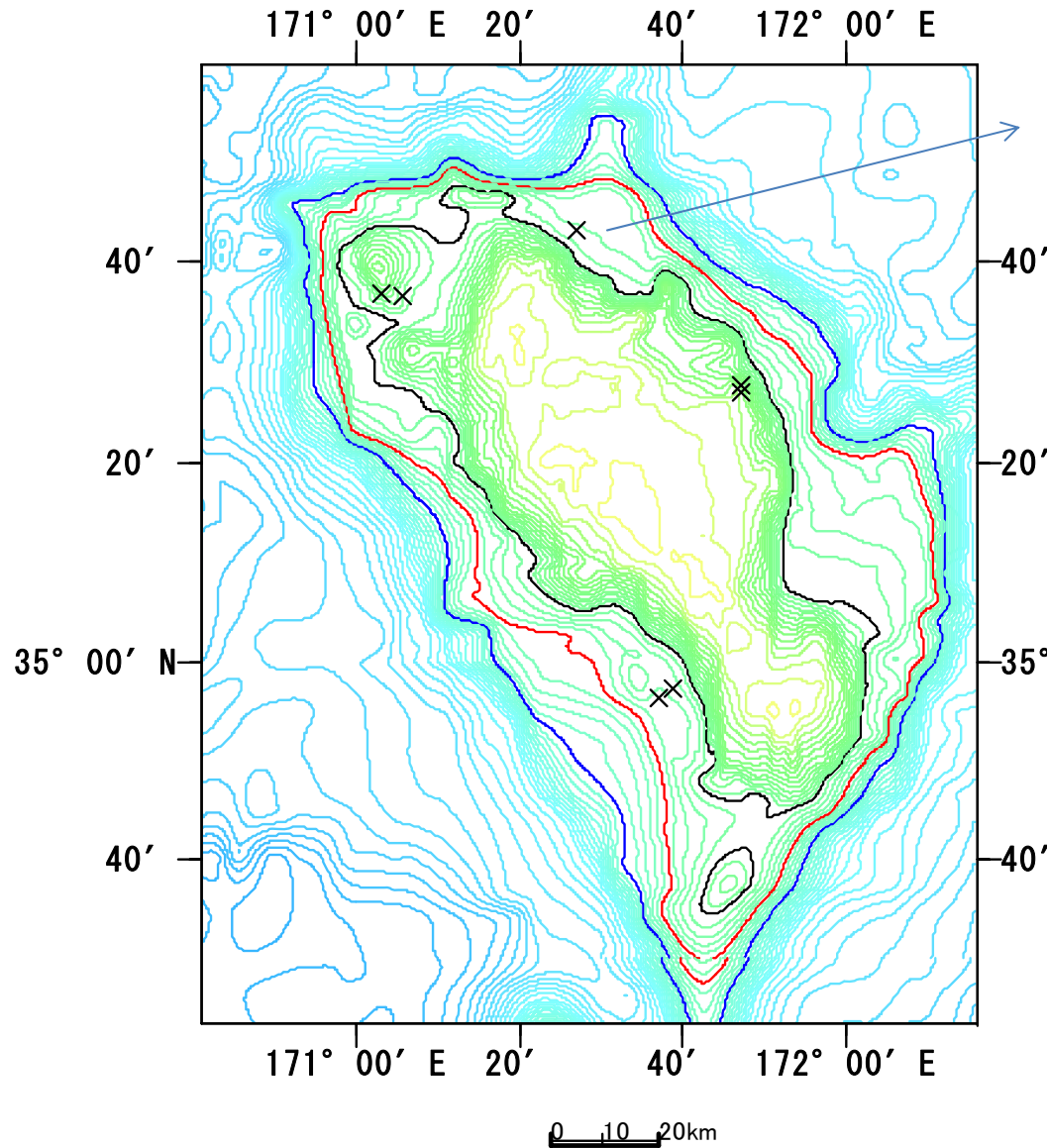
35-36.73 N, 171-02.95E, 725.8m



# Koko Seamount 4

St31 2008/8/8

35-43.09N, 171-26.99E, 1173.08m



# Summary

- There were few corals of the four orders in the slope and deep area of the Emperor Seamounts.
- Some corals were observed by drop camera system in the slope area of Colahan Seamount (St14) and Koko Seamount (St25 and St29).