

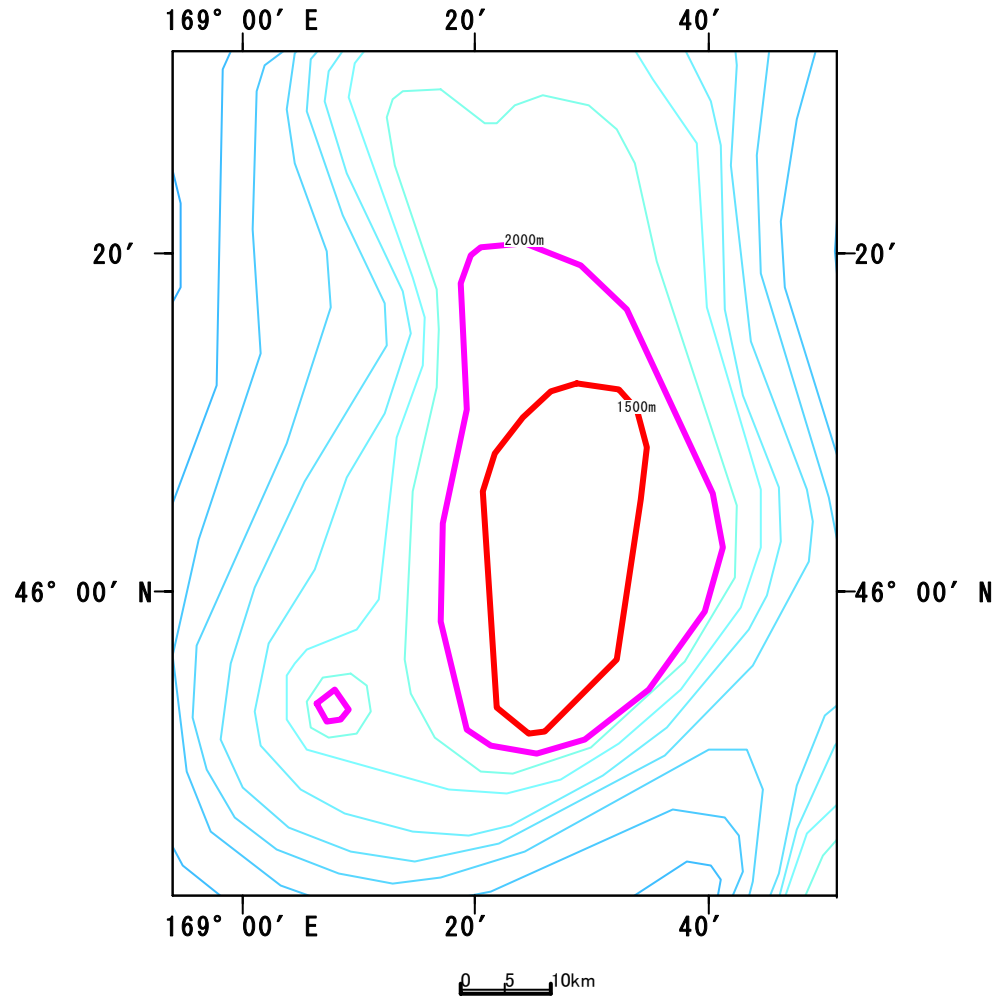
Seamount Bathymetries

Takashi Yanagimoto
National Research Institute of Far Seas
Fisheries
FRA

Materials and Method

- Bathymetries of Koko, Kinmei, Yuryaku, Kammu, Colahan were made from 2006 survey data (GPS position data and fish founder data (KFS3000, Kaijo Co.,)). Bathymetries of Nintoku, Jingu, Ojin, Northern Koko were made from 2007 survey data (GPS position data and echo sounder data (KFS3000, Kaijo Co.,)). No authorization will be required to use these bathymetries.
- Bathymetries of the other seamounts were drawn by Marine Explorer Ver4 (Environmental Simulation Laboratory Co. Ltd, <http://www.esl.co.jp/index.htm>). Authorization of this company will be required to use these bathymetries.

Jimmu Seamount

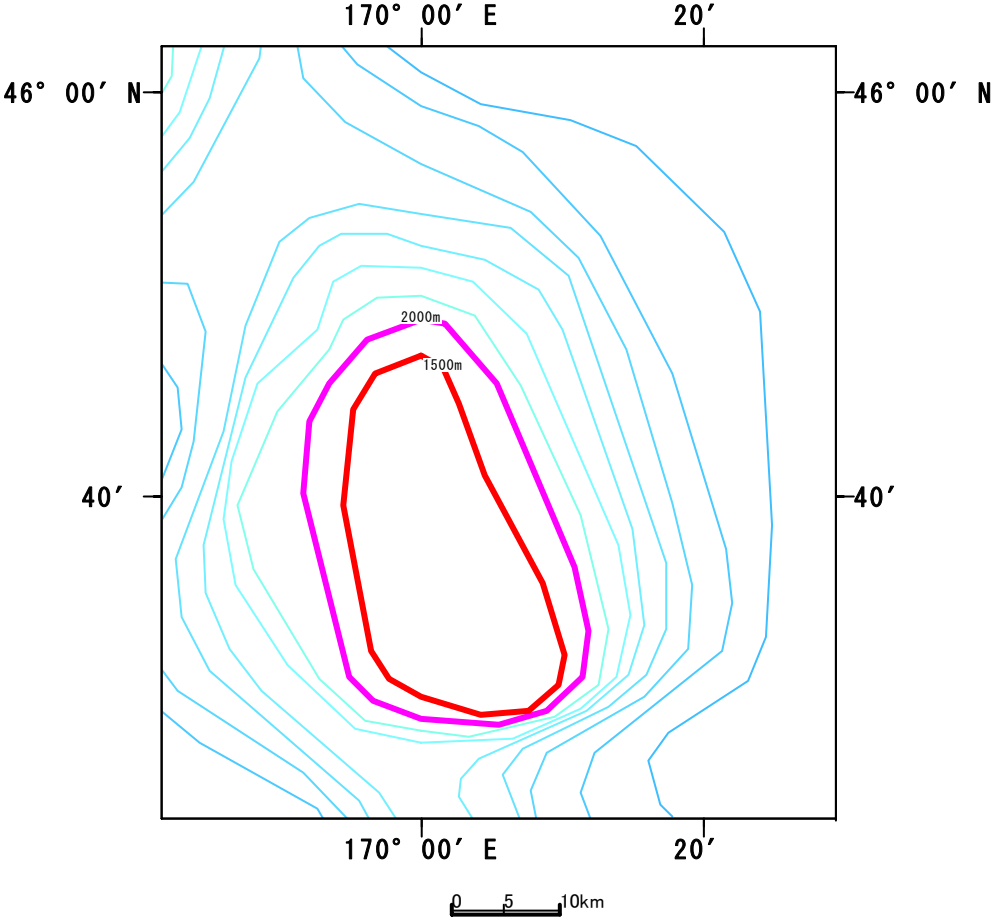


No
available
3D Map

Depth

Red Line: 1500m, Purple Line: 2000m

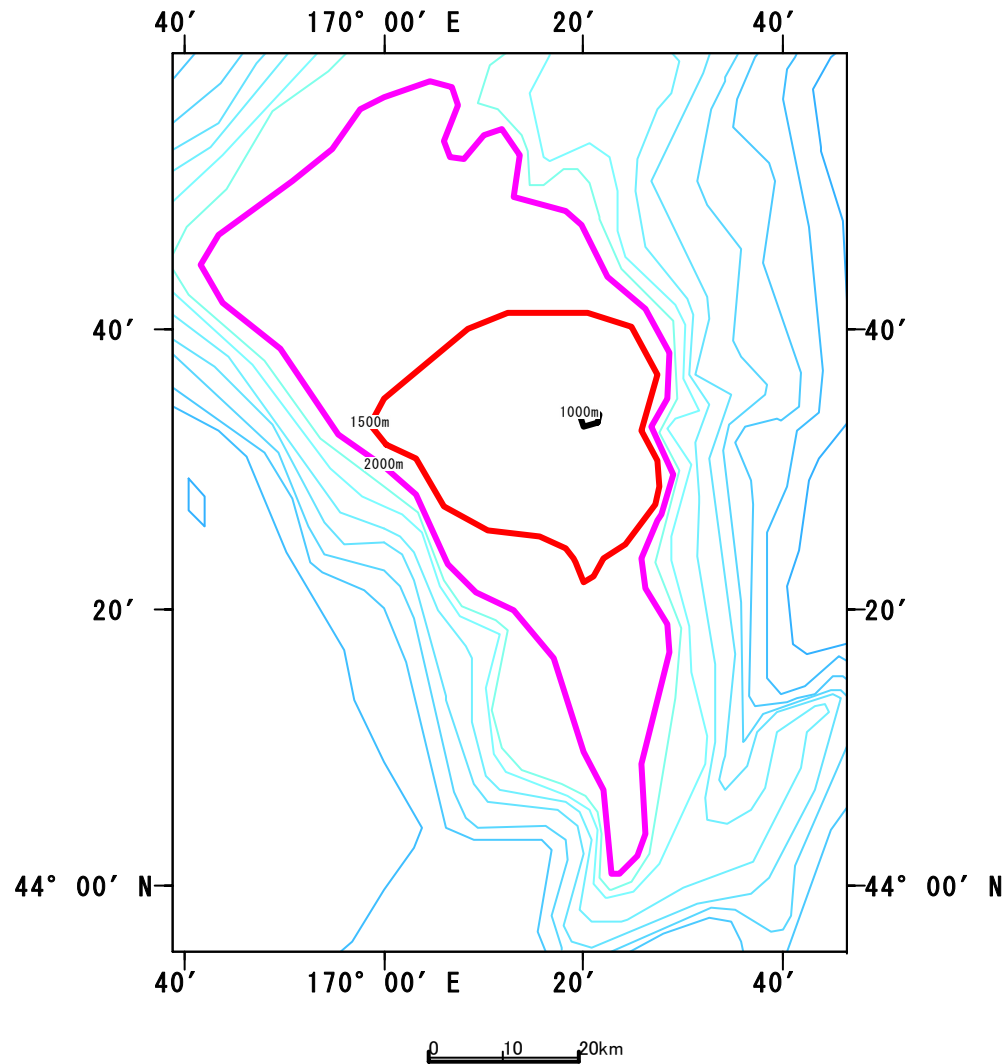
North bank of Suiko Seamount



No
available
3D Map

Depth
Red Line: 1500m, Purple Line: 2000m

South bank of Suiko Seamount

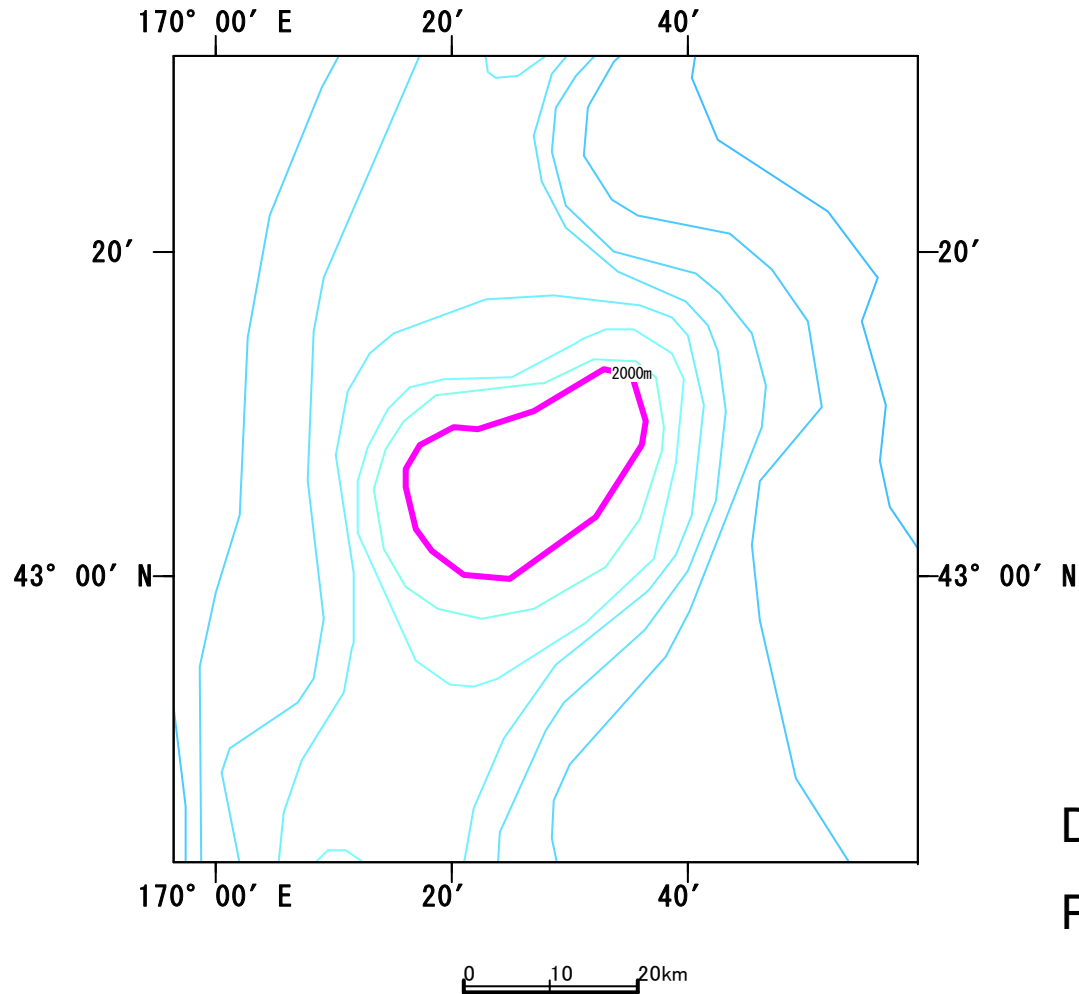


No
available
3D Map

Depth

Black Line: 1000m, Red Line: 1500m,
Purple Line: 2000m

Showa Seamount

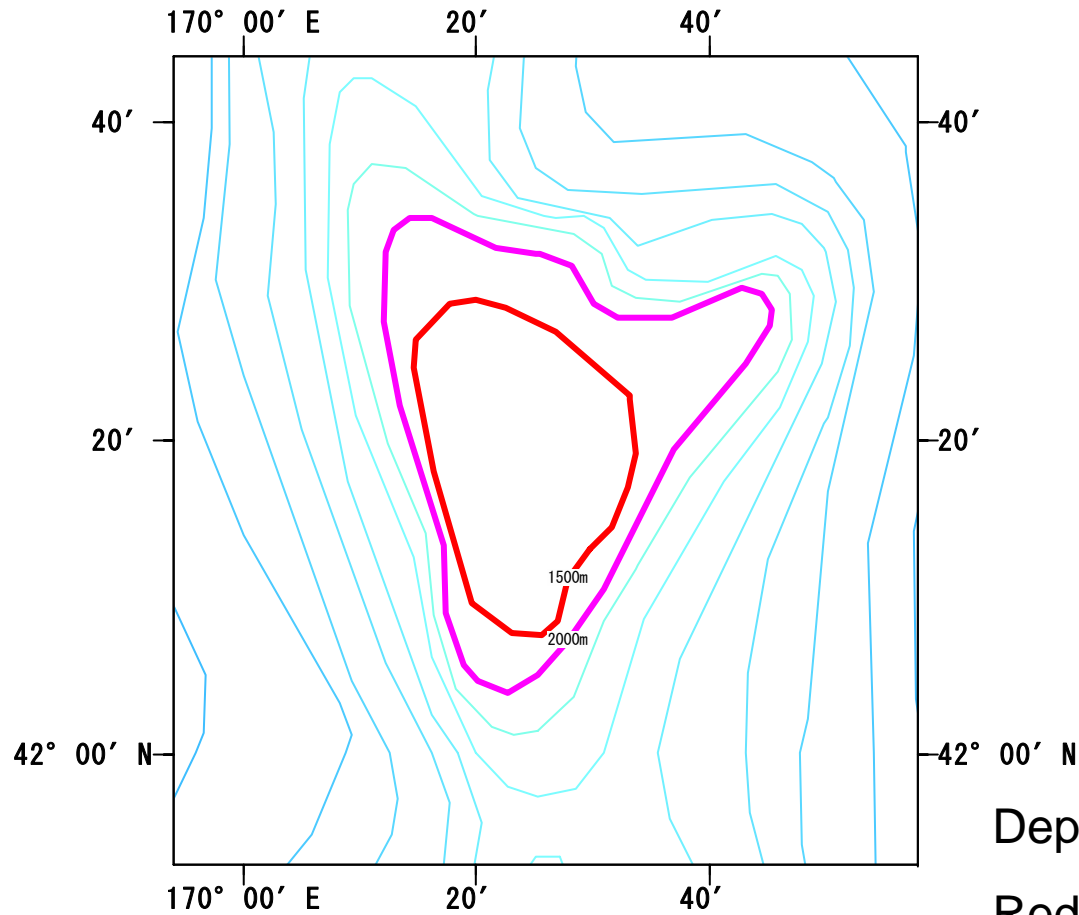


No
available
3D Map

Depth

Purple Line: 2000m

Youmei Seamount

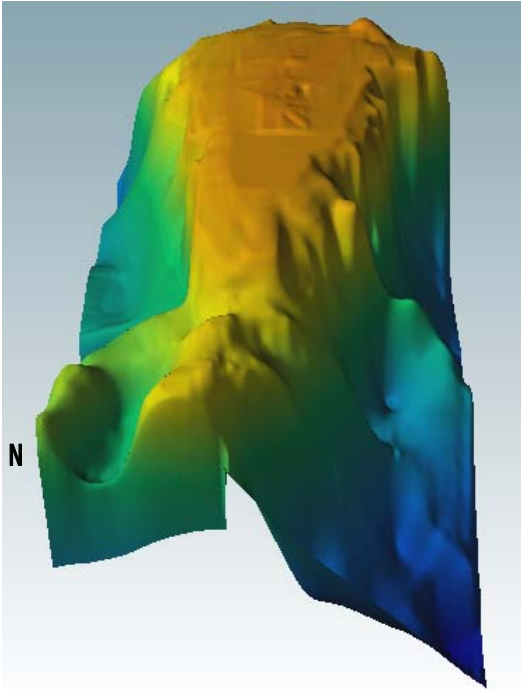
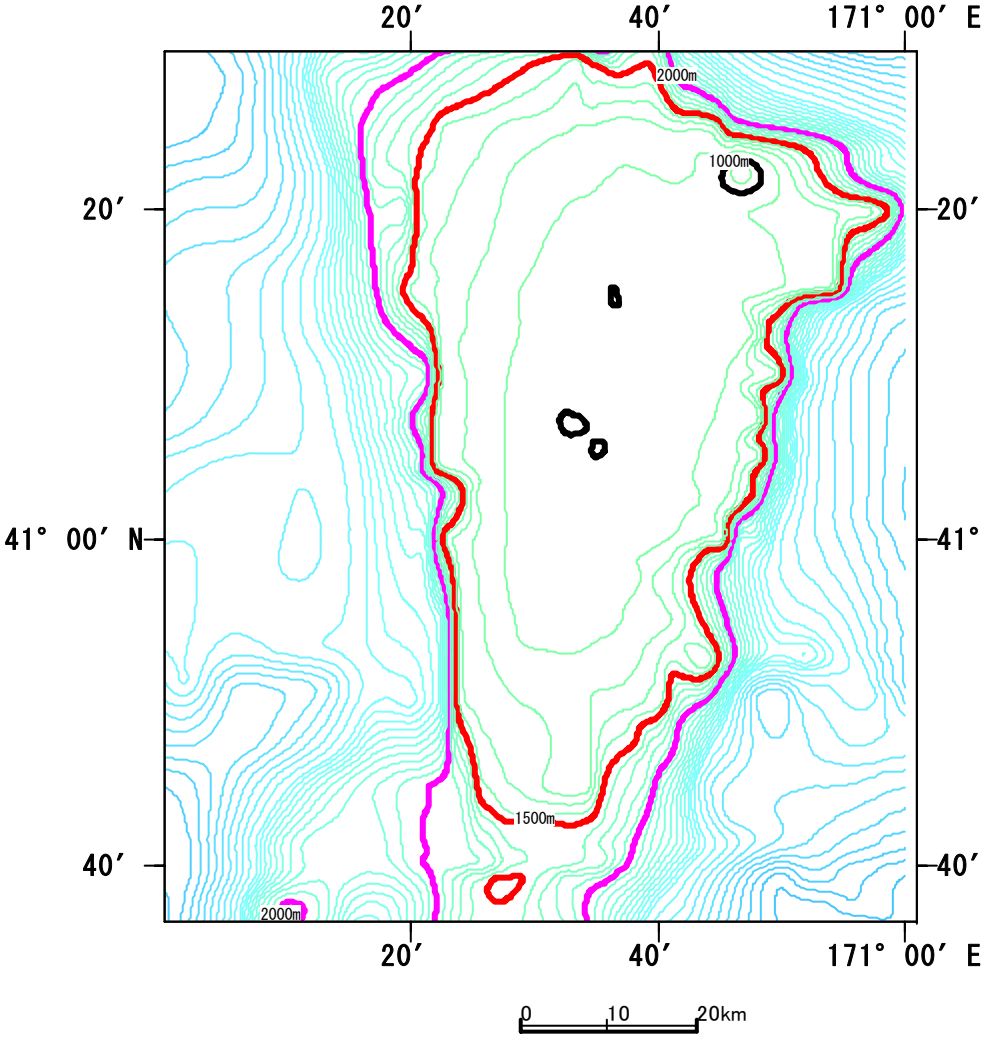


No
available
3D Map

Depth

Red Line: 1500m, Purple Line: 2000m

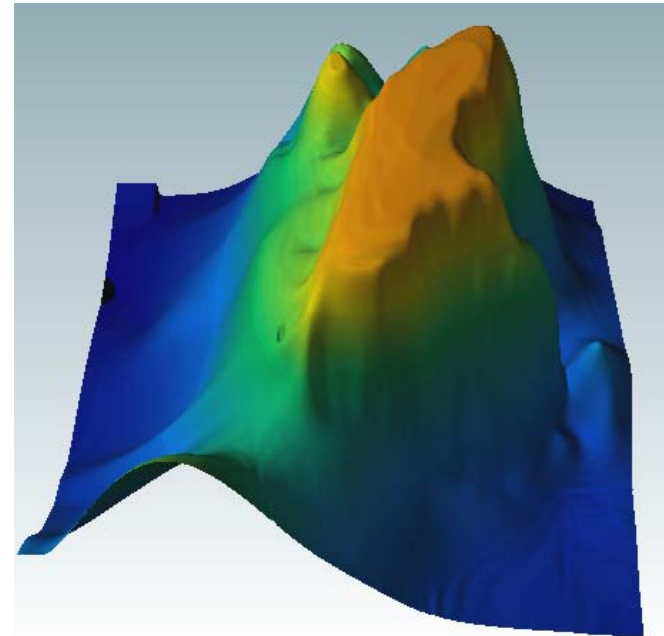
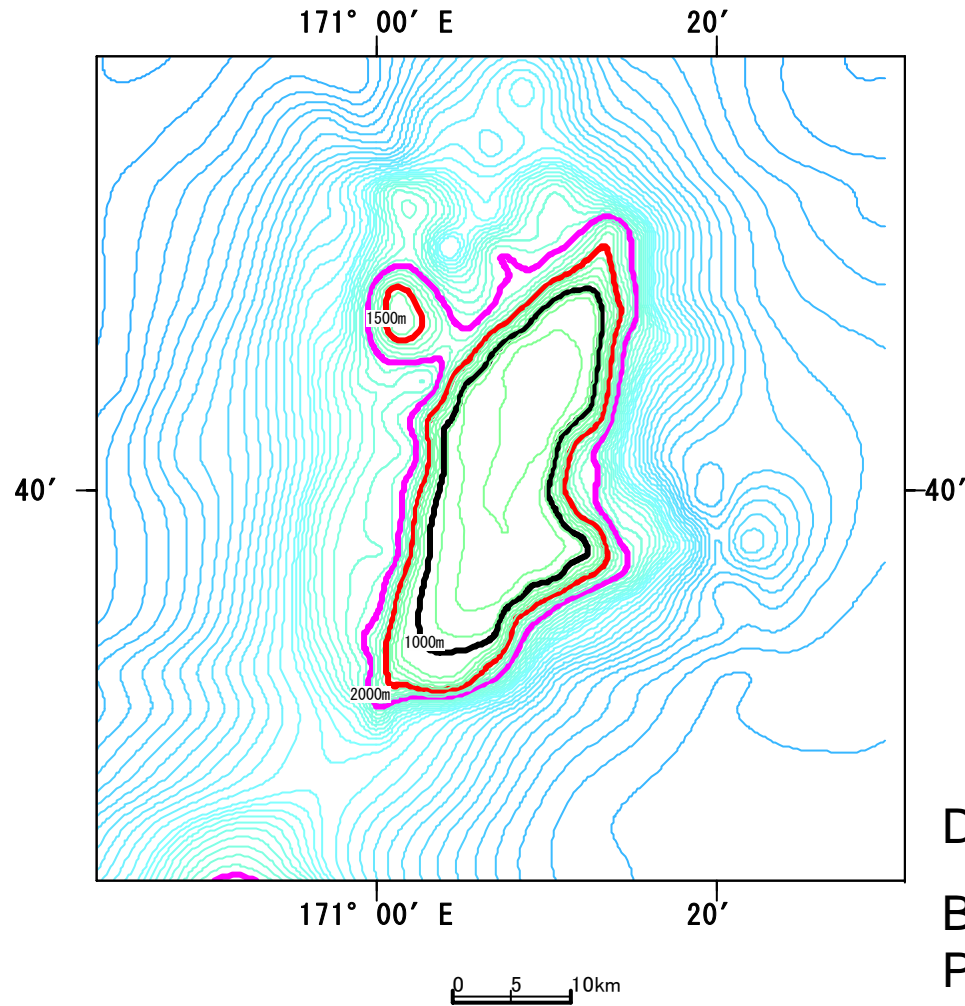
Nintoku Seamount



Depth

Black Line: 1000m, Red Line: 1500m,
Purple Line: 2000m

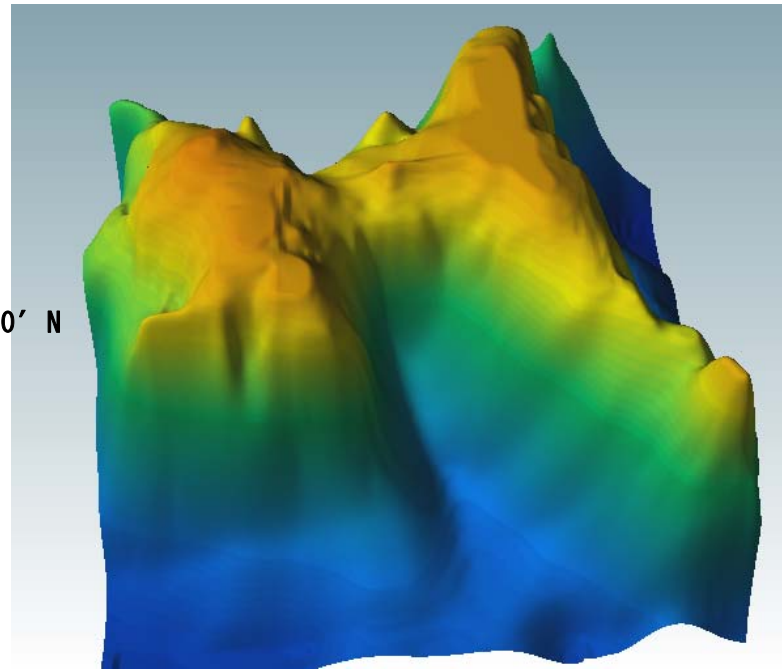
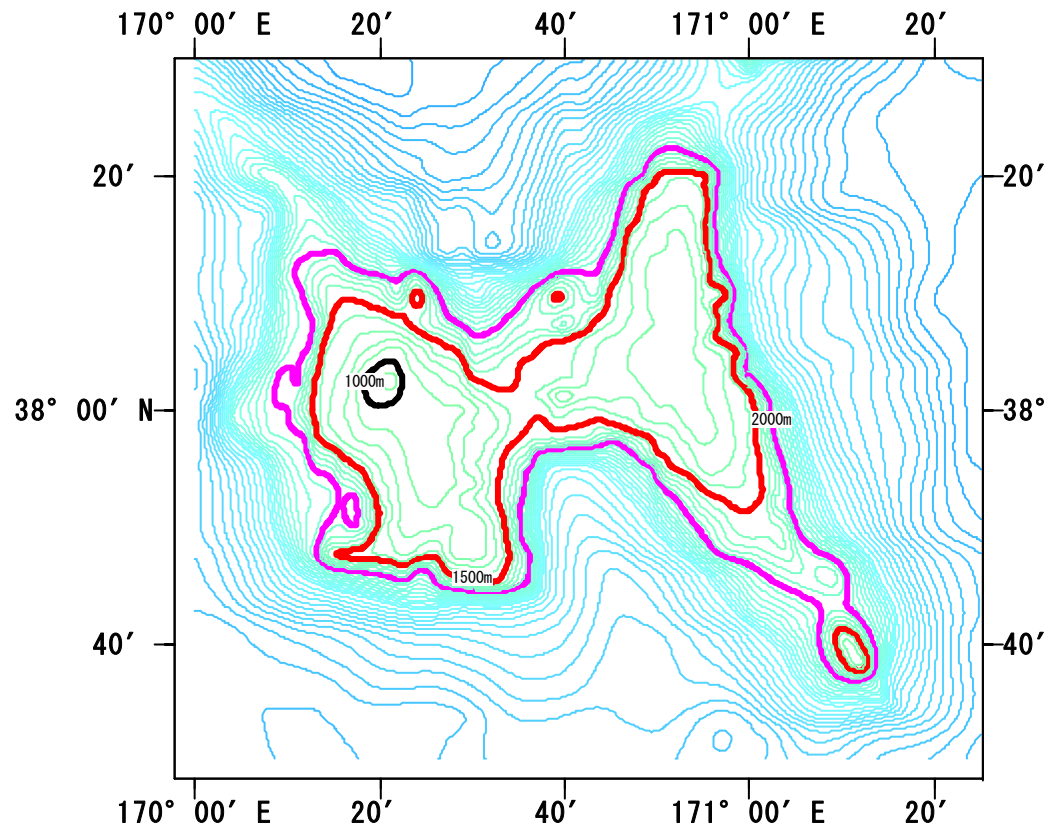
Jingu Seamount



Depth

Black Line: 1000m, Red Line: 1500m,
Purple Line: 2000m

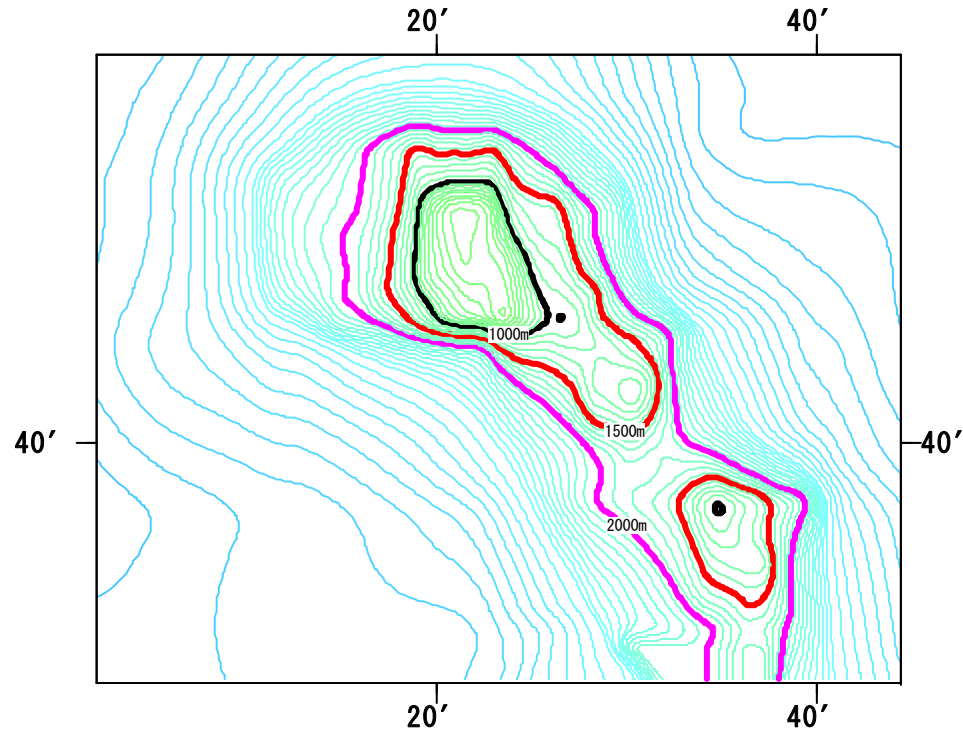
Ojin Seamount



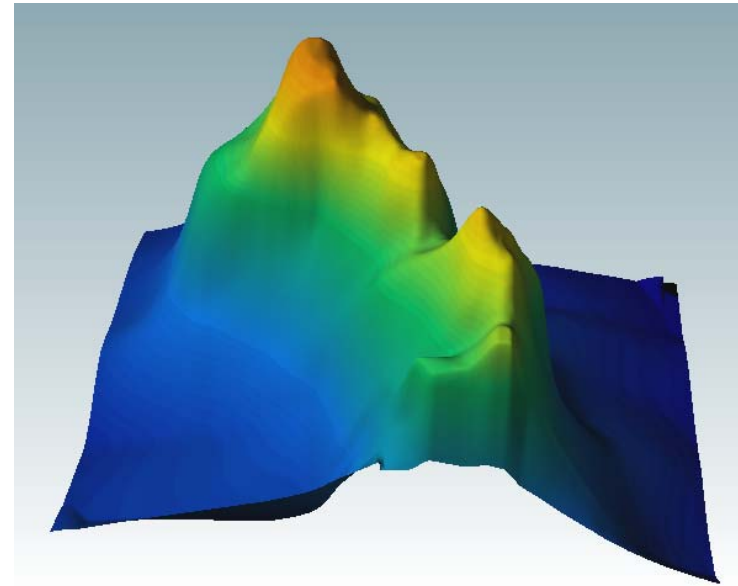
Depth

Black Line: 1000m, Red Line: 1500m,
Purple Line: 2000m

Northern Koko



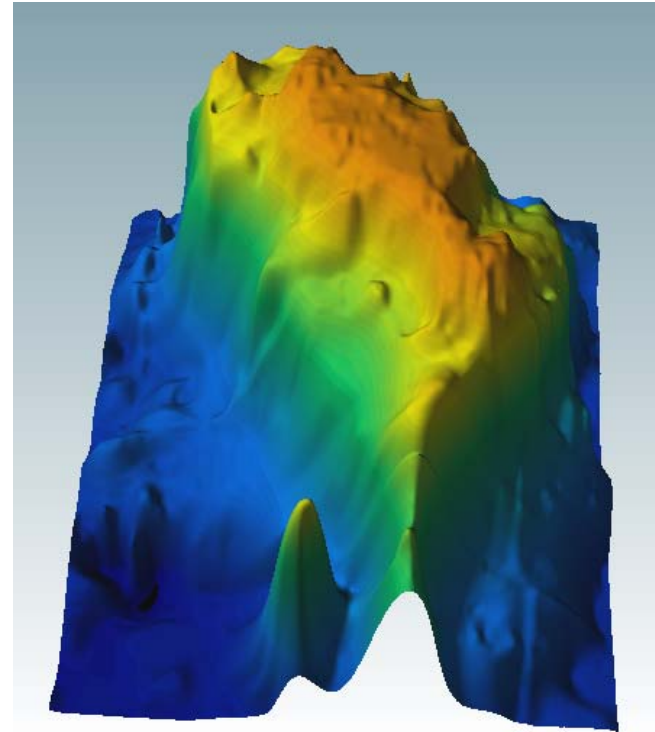
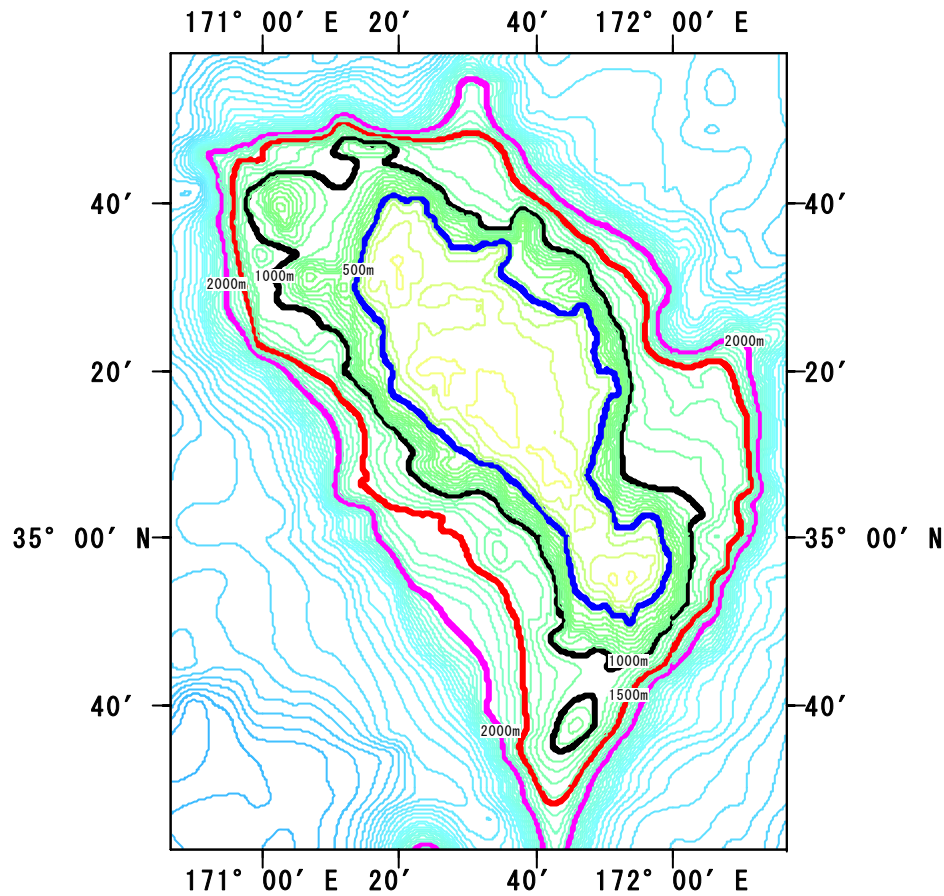
0 5 10km



Depth

Black Line: 1000m, Red Line: 1500m,
Purple Line: 2000m

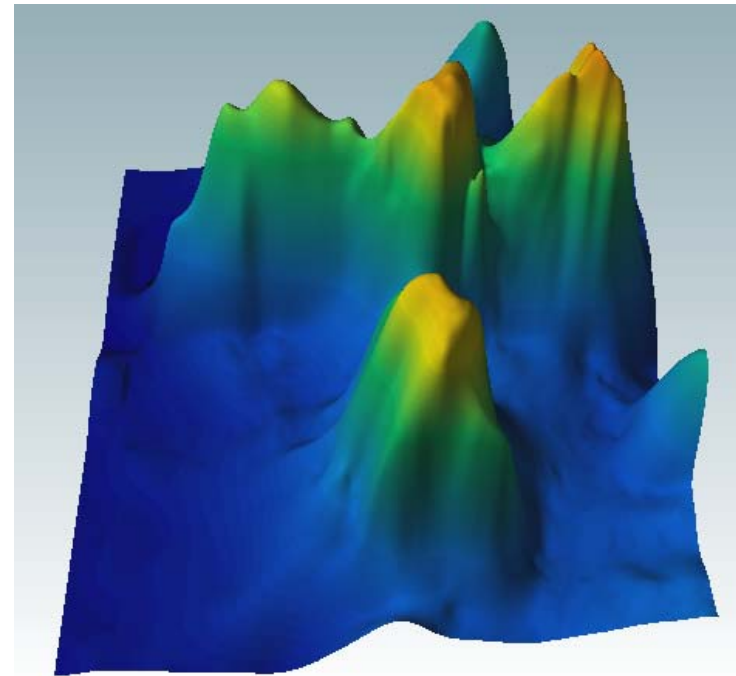
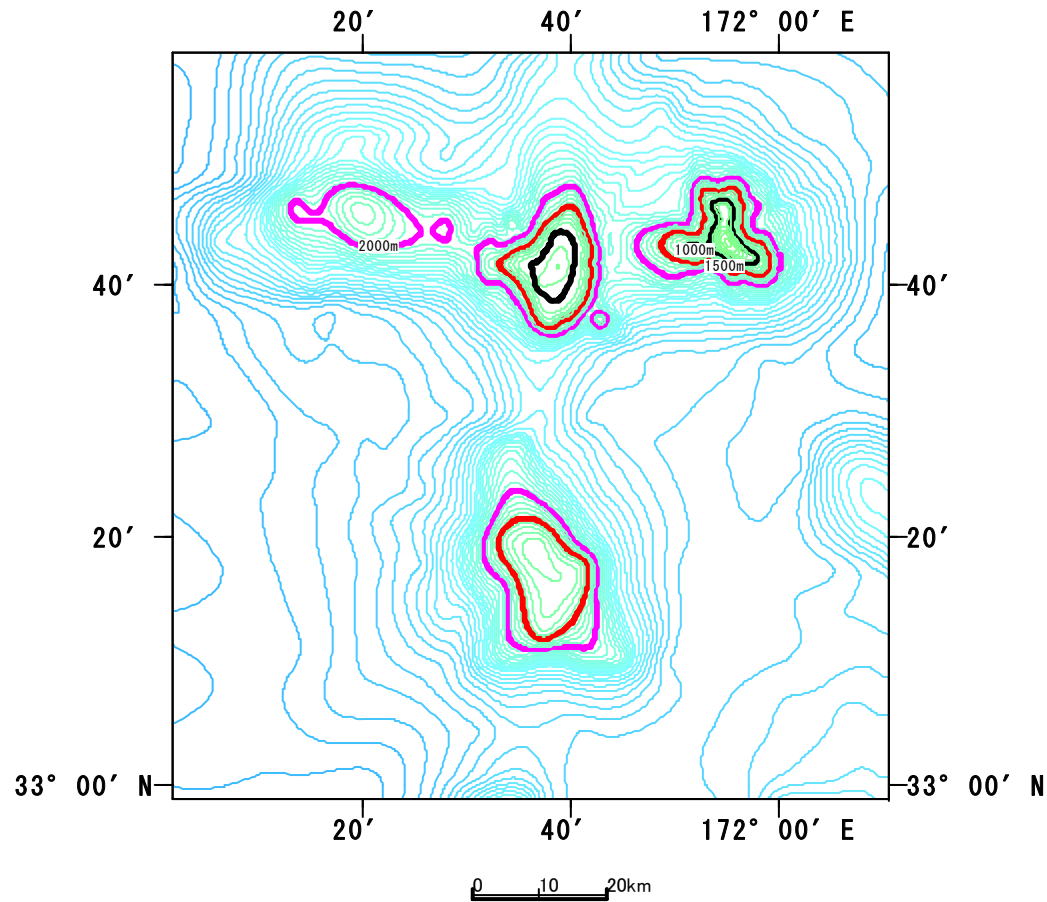
Koko Seamount



Depth

Blue Line: 500m, Black Line: 1000m,
Red Line: 1500m, Purple Line: 2000m

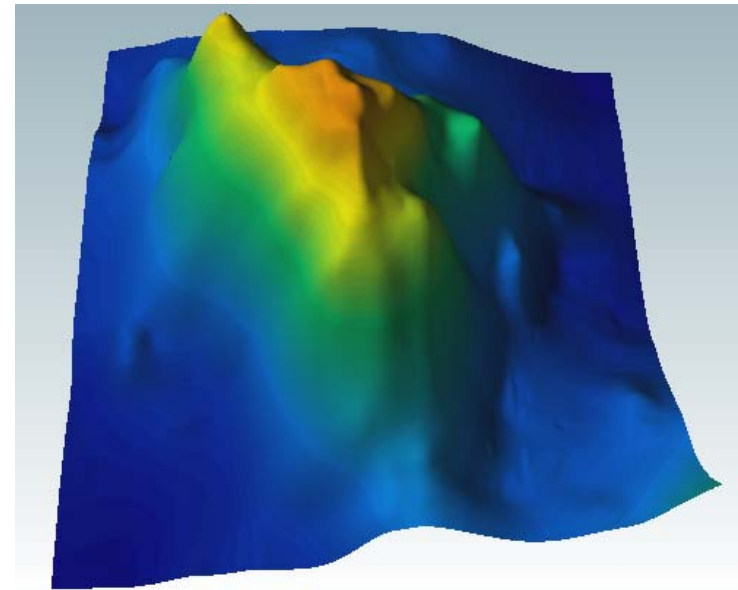
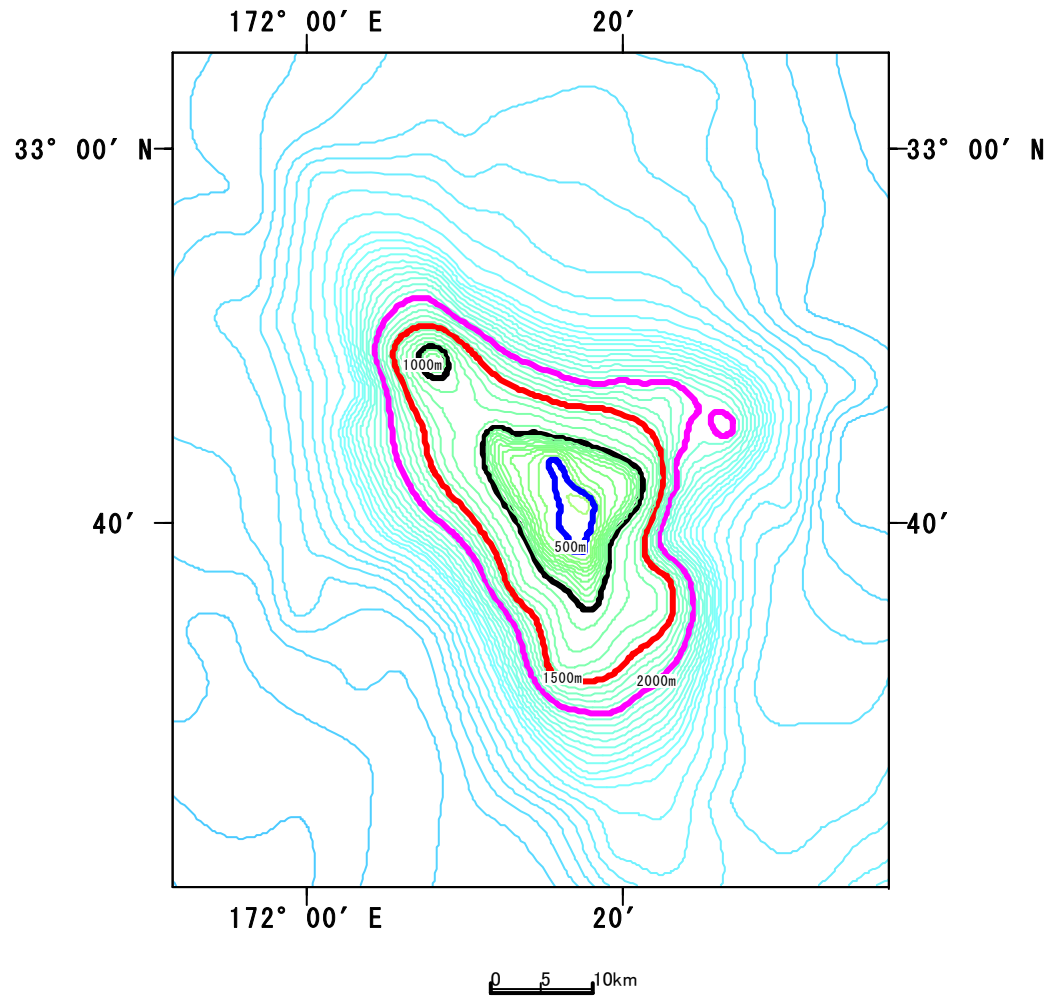
Kinmei Seamount et al.



Depth

Black Line: 1000m, Red Line: 1500m,
Purple Line: 2000m

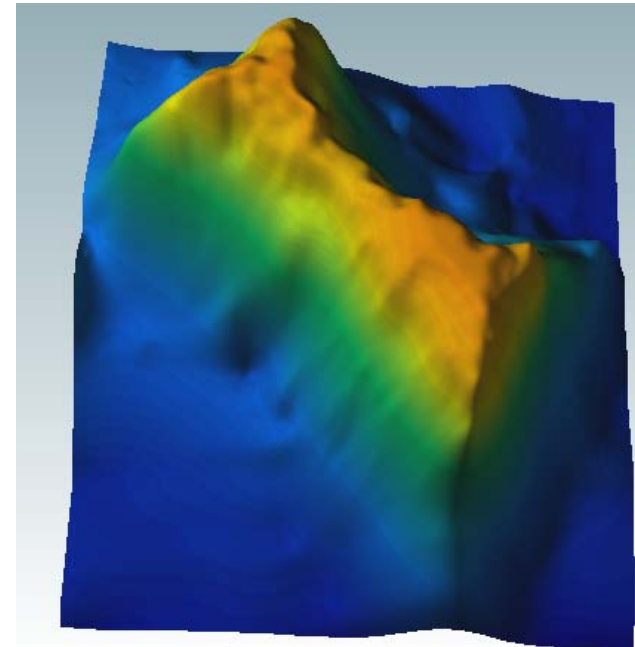
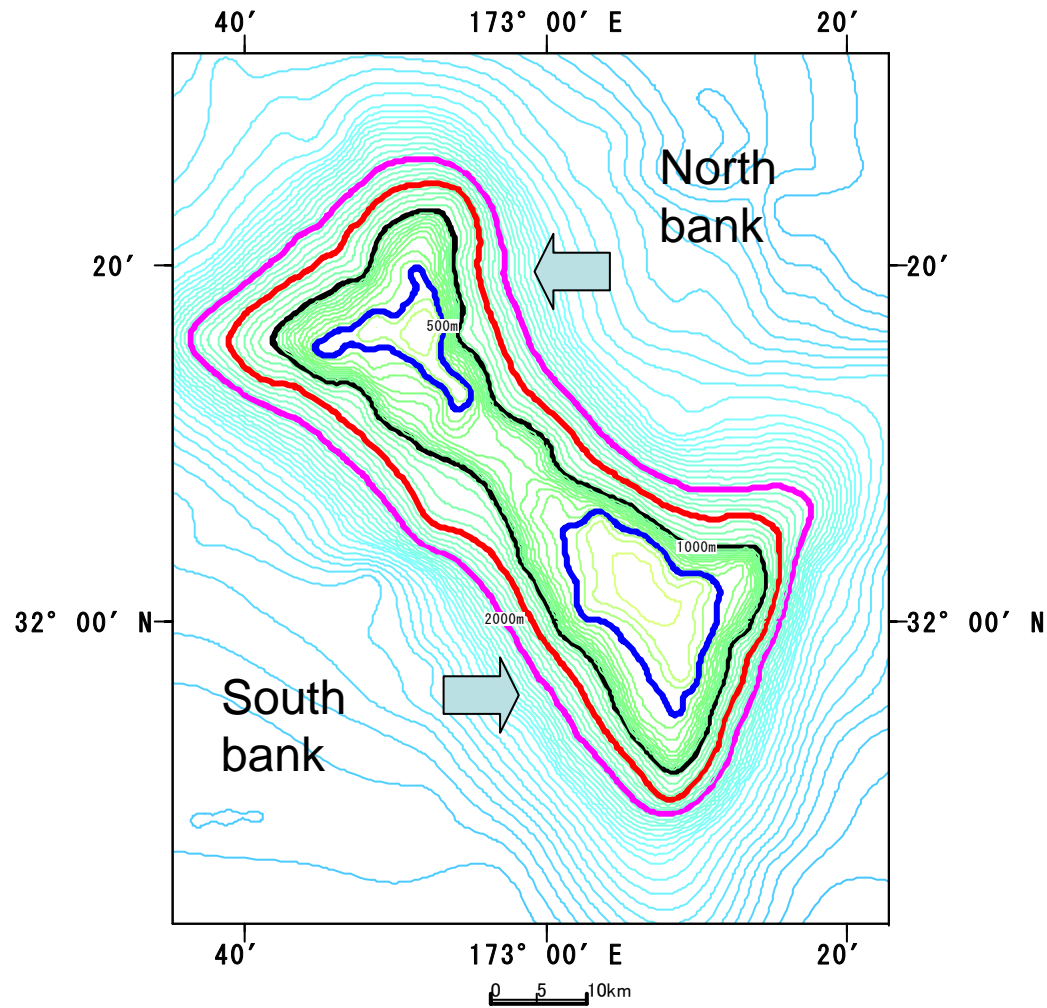
Yuryaku Seamount



Depth

Blue Line: 500m, Black Line: 1000m,
Red Line: 1500m, Purple Line: 2000m

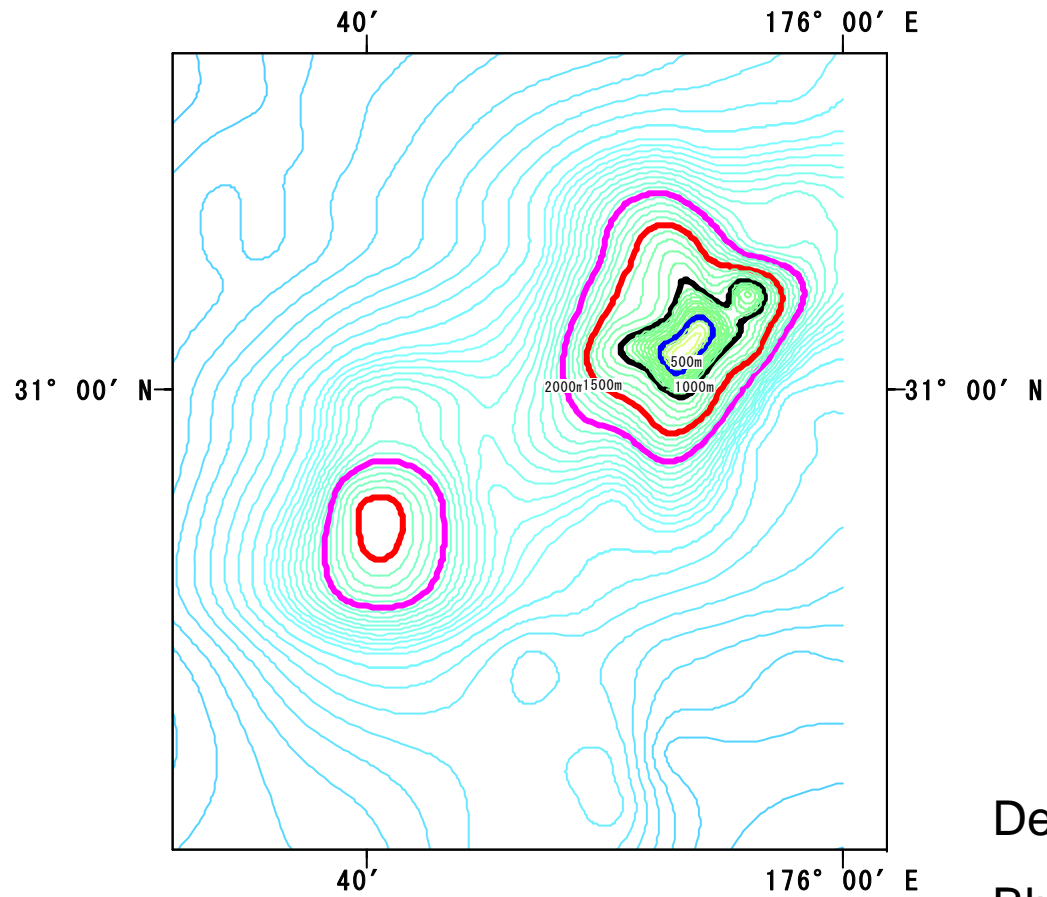
Kammu Seamount



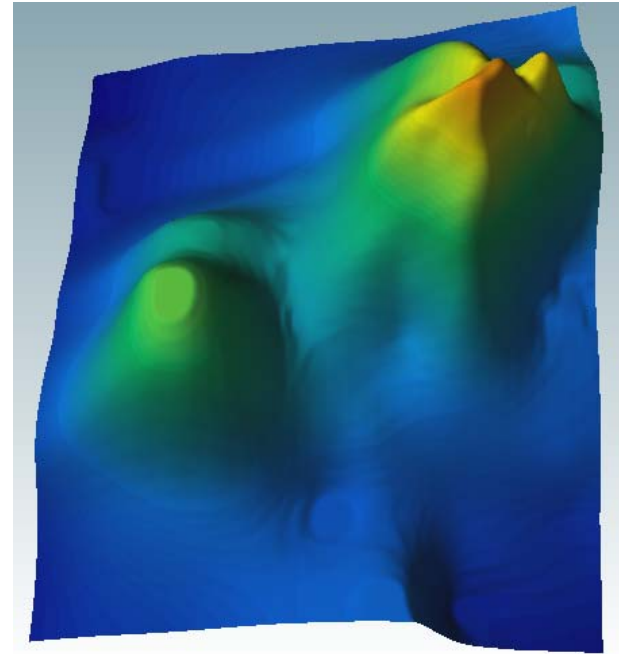
Depth

Blue Line: 500m, Black Line: 1000m,
Red Line: 1500m, Purple Line: 2000m

Colahan Seamount



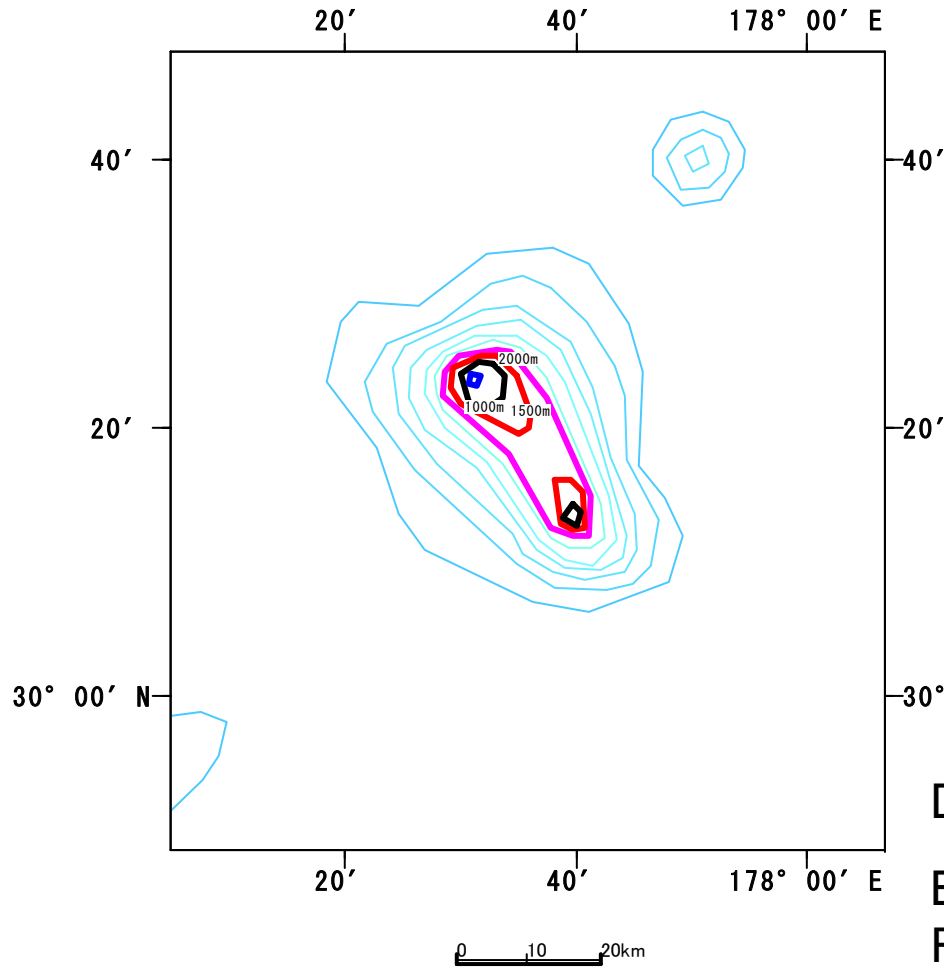
0 5 10km



Depth

Blue Line: 500m, Black Line: 1000m,
Red Line: 1500m, Purple Line: 2000m

C-H Seamount

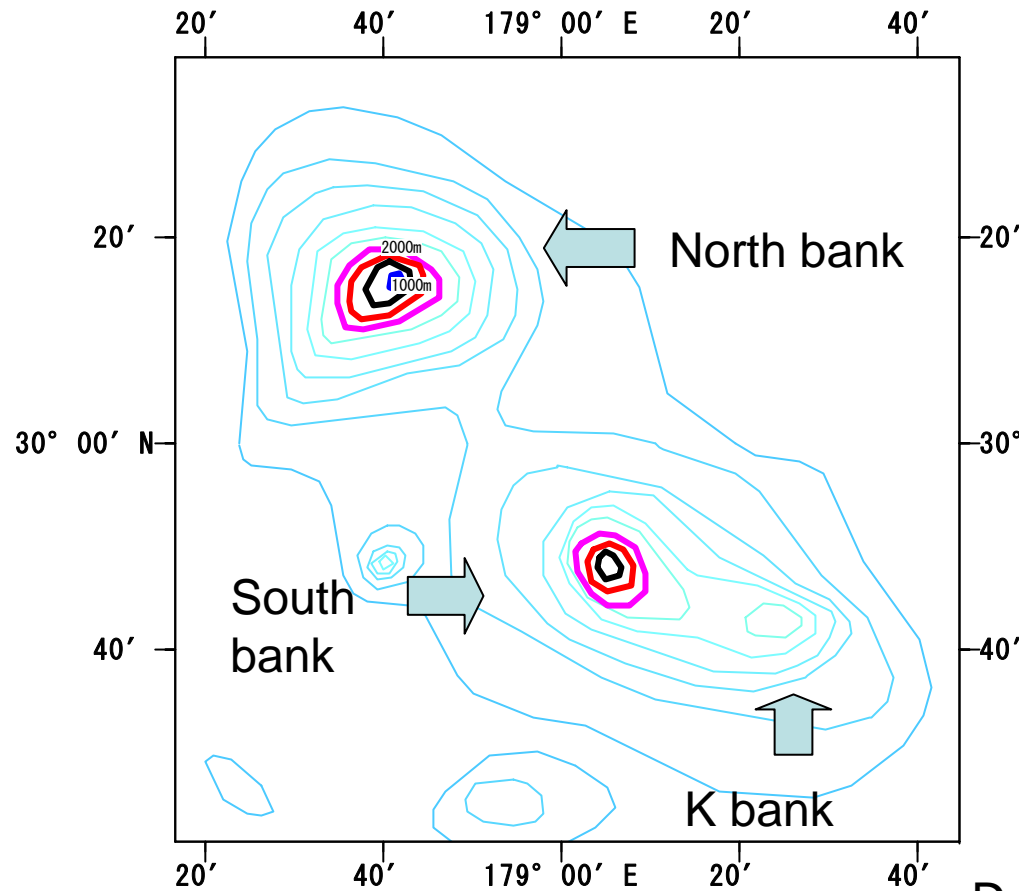


No
available
3D Map

Depth

Blue Line: 500m, Black Line: 1000m,
Red Line: 1500m, Purple Line: 2000m

Hancock Seamount

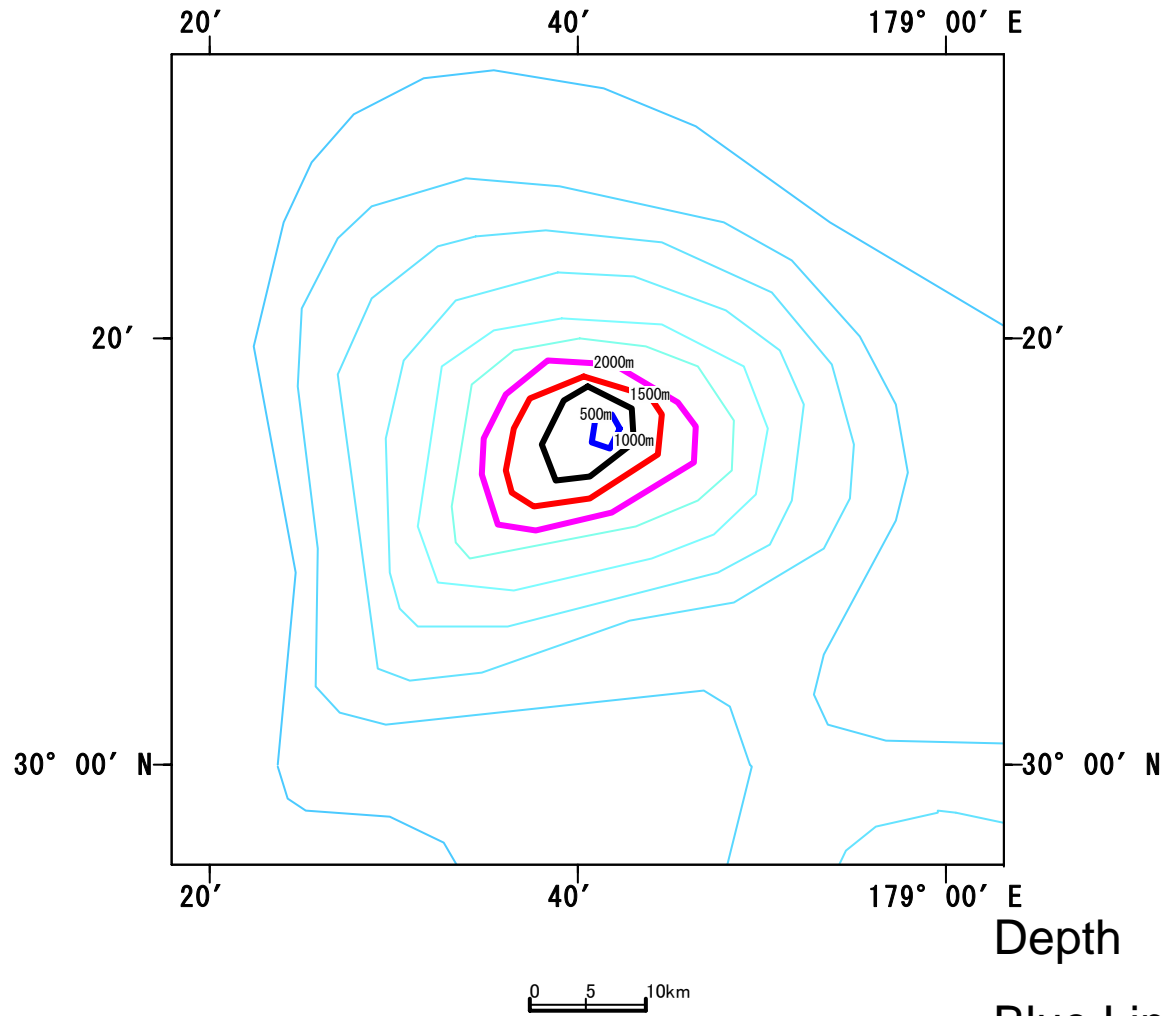


No
available
3D Map

Depth

Blue Line: 500m, Black Line: 1000m,
Red Line: 1500m, Purple Line: 2000m

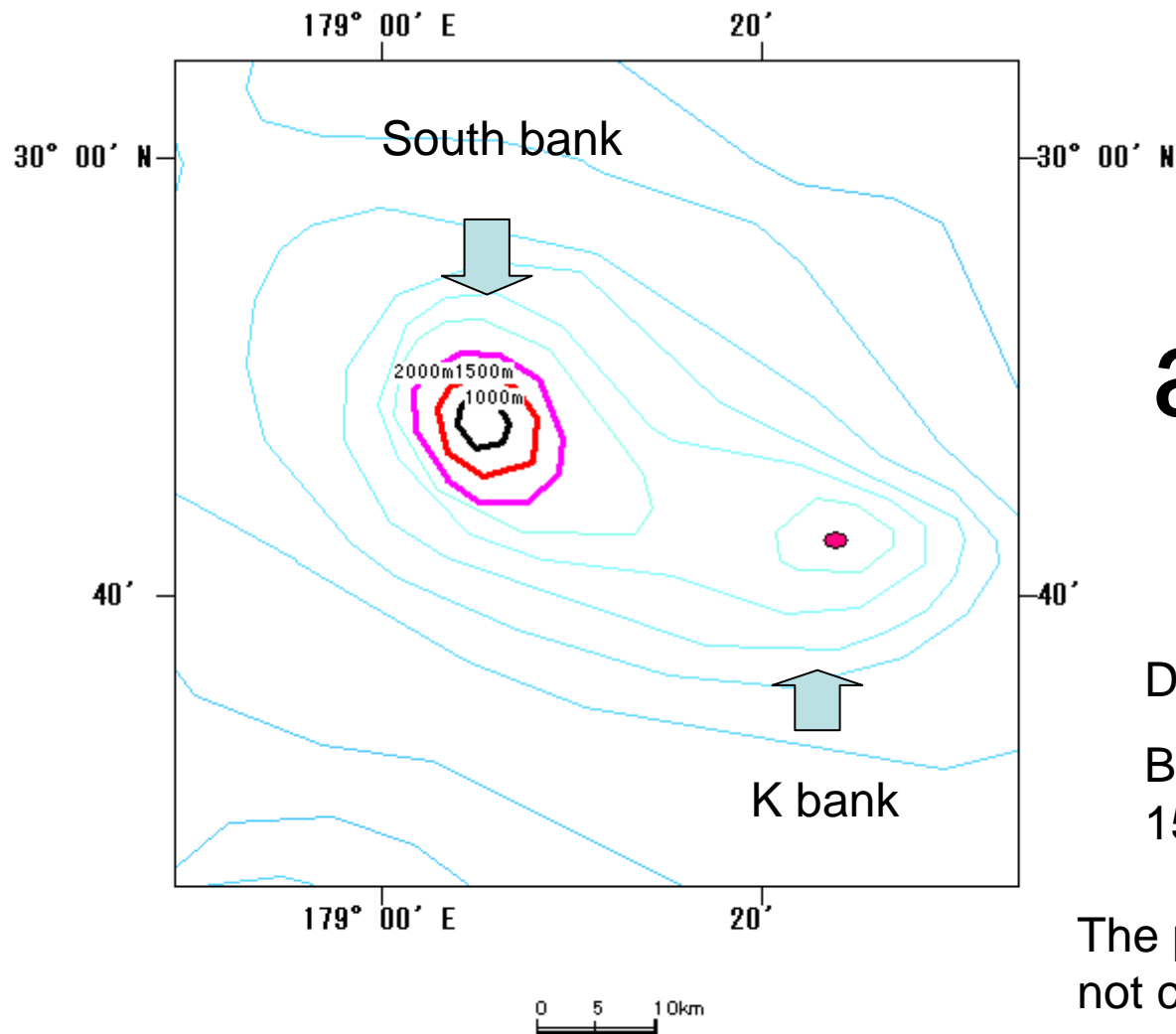
North bank of Hancock



No
available
3D Map

Blue Line: 500m, Black Line: 1000m,
Red Line: 1500m, Purple Line: 2000m

South bank and k bank of Hancock



No
available
3D Map

Depth

Black Line: 1000m, Red Line:
1500m, Purple Line: 2000m

The position and depth of K bank is
not clear in the contour data of ME.

Reference

- Clague DA, Dalrymple GB, Green HG, Wald D, Knono M, Kroenke LW, 1980. Bathymetry of the Emperor Seamounts. In: Jackson ED, Koisumi I, et al., Initial reports of the Deep Sea Drilling Project, Vol55. US Govt. Printing Office, Washinton, DC., foldout chart.
- Davies TA, Wilde P, Clague DA., 1972. Koko Seamount: A major guyot at the Southern end of the Emperor seamounts. Mar. Geol., 13: 311-321.
- Smoot N. Christian. 1986. Bathymetric atlas of norht Pacific Guyots. University of Southern Mississippi. pp129.
- Smoot N. Christian. 1985. Guyot and seamount morphology and tectonics of the Hawaiian-Emperor elbow by multi-beam sonar. Mar. Geol., 64: 203-215.
- Smoot N. Christian. 1991. North Pacific Guyots. Naval Oceanographic Office. Technical note. pp96.