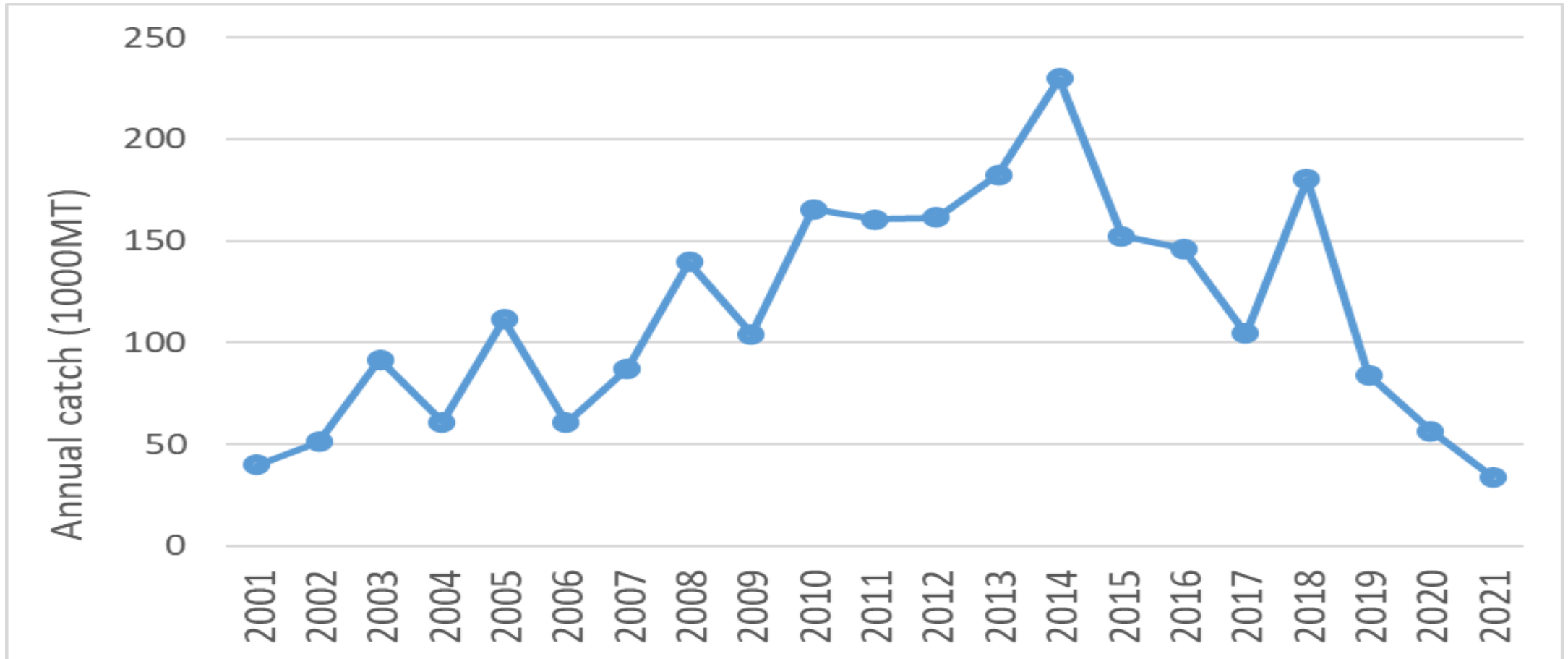


Fishery status for Pacific saury

Report of Chinese Taipei

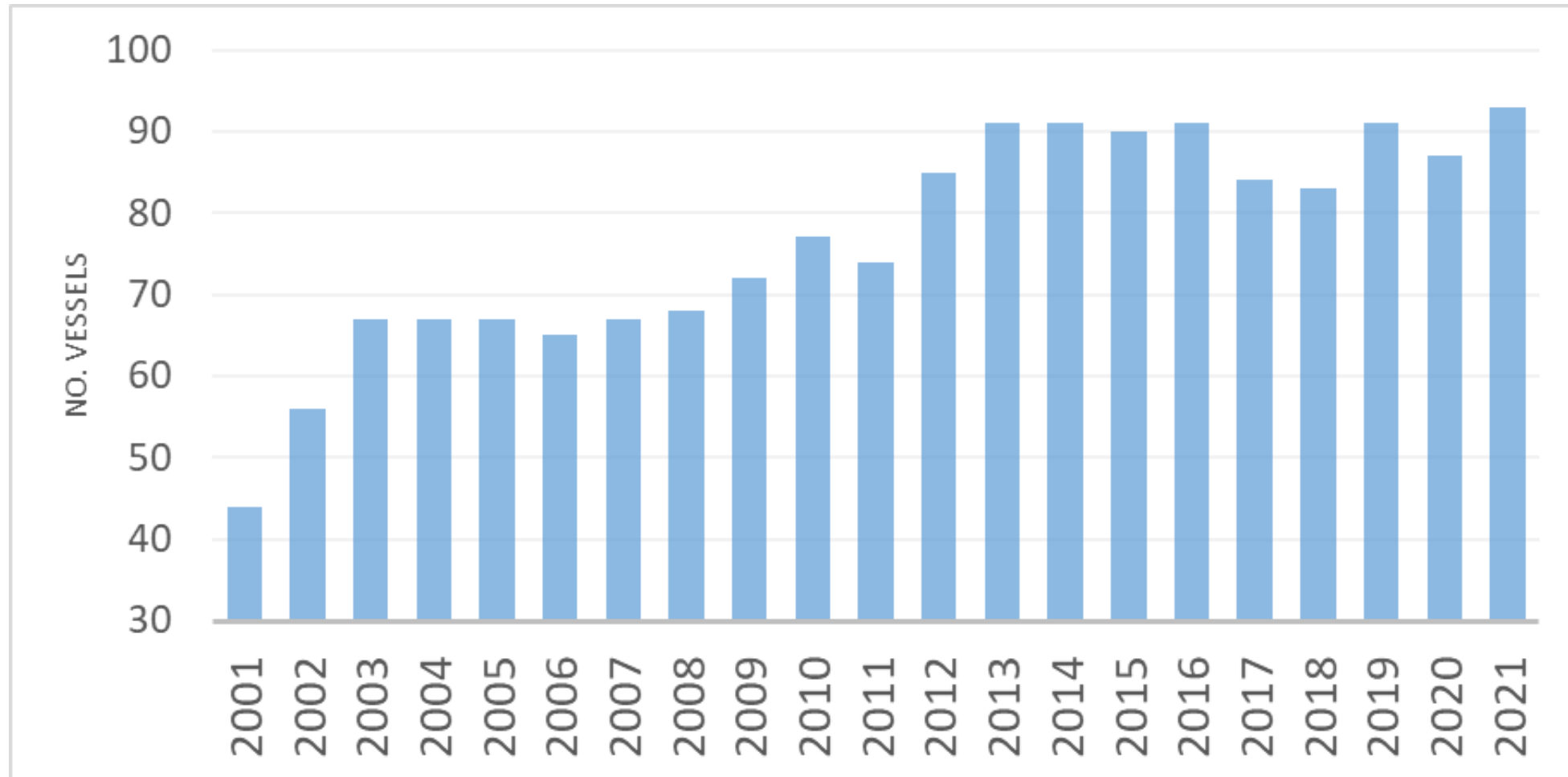


Annual catch series



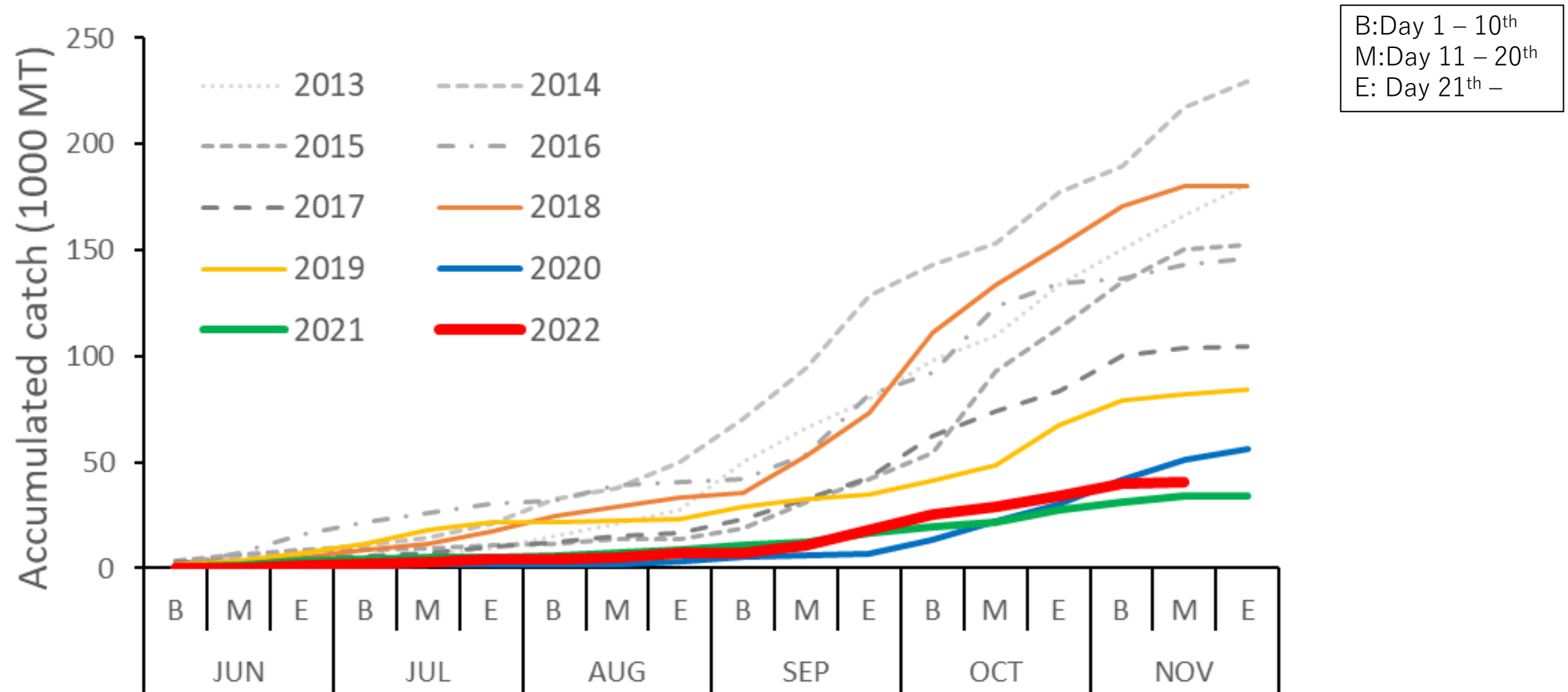
- The historical catch reached the highest in 2014.
- In 2018, the saury catch were around 180,000 tons. Since then, the catch has been decreasing every year.

Number of vessels



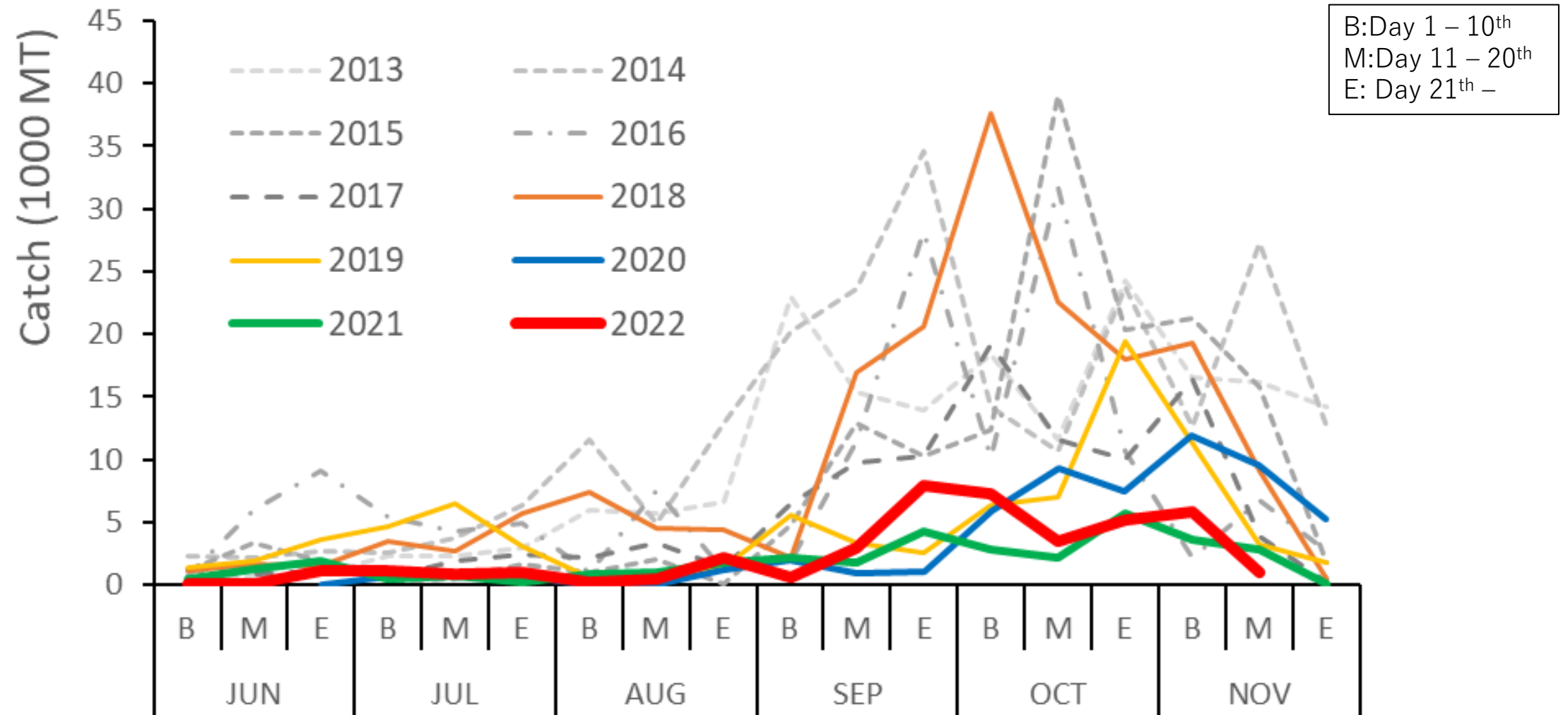
- 87 vessels conducted fishing activities in 2020, and in 2021, the number increased to 93.

Accumulated catch

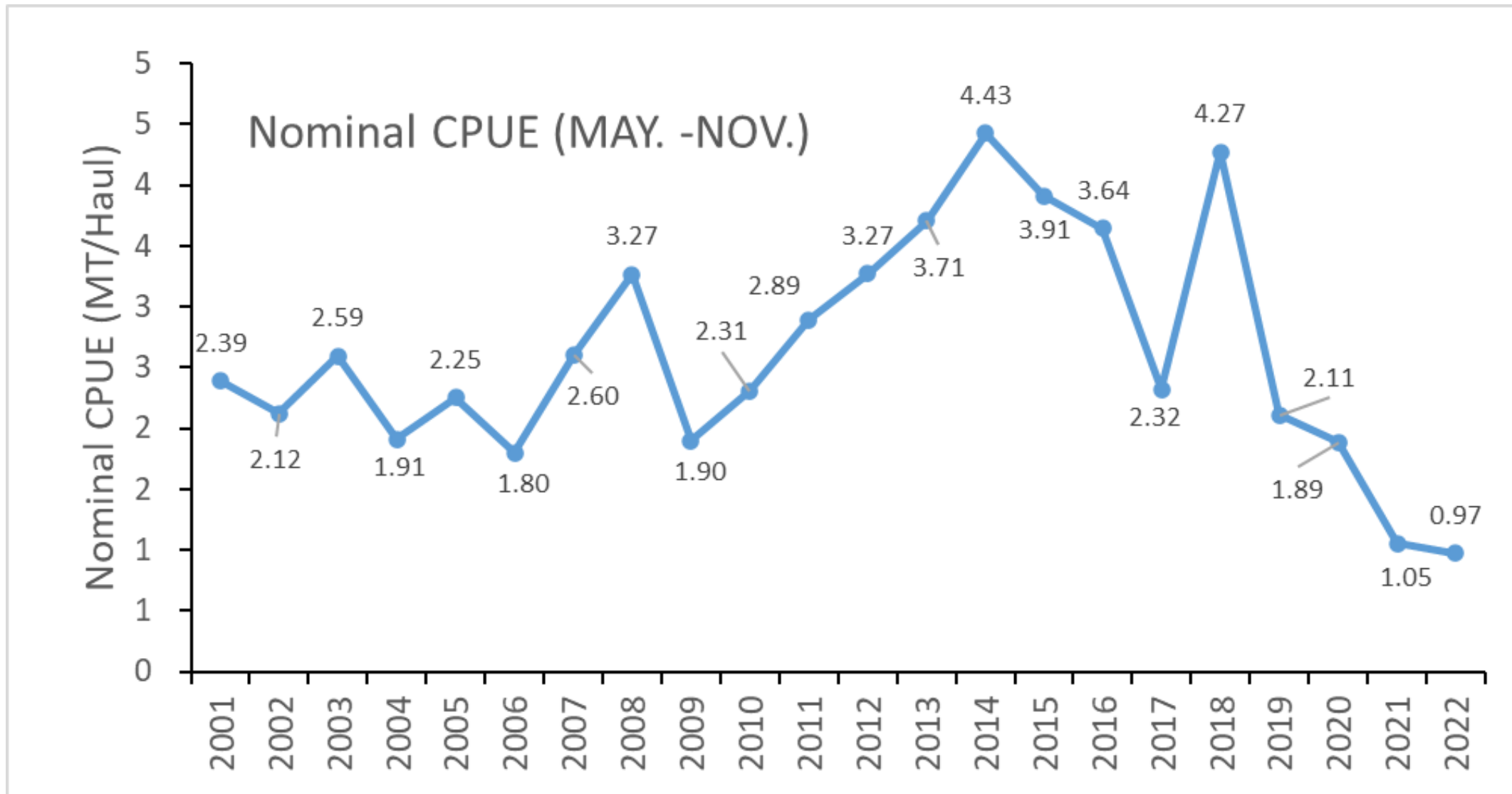


- Accumulated catch by the end of November was 40,963 tons, which was more than that of the same period last year (34,040 tons).

Seasonal catch

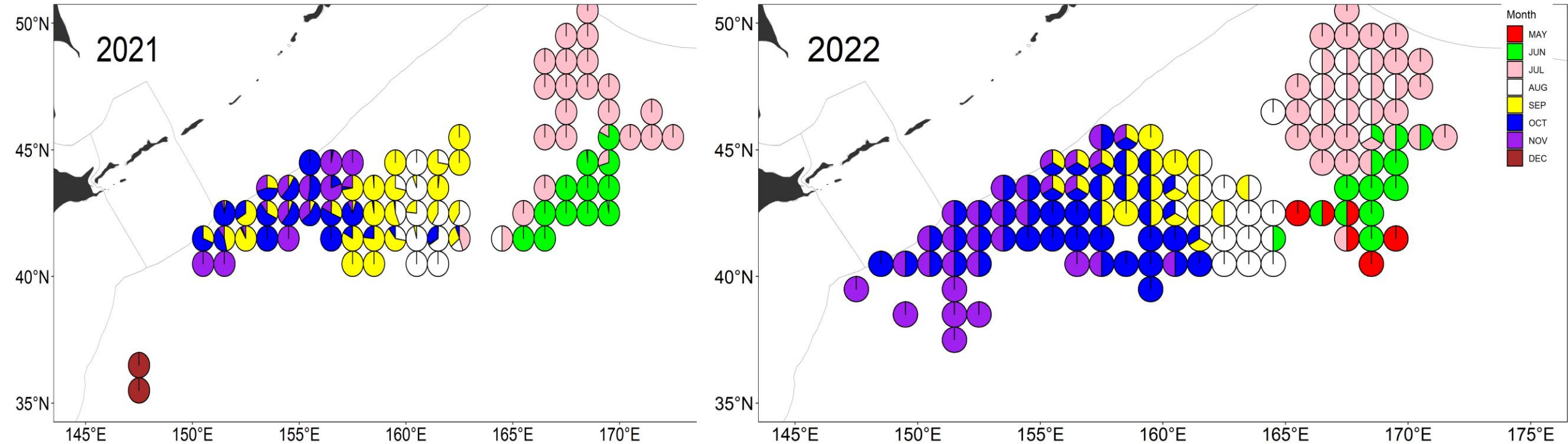


- This was better than last year.



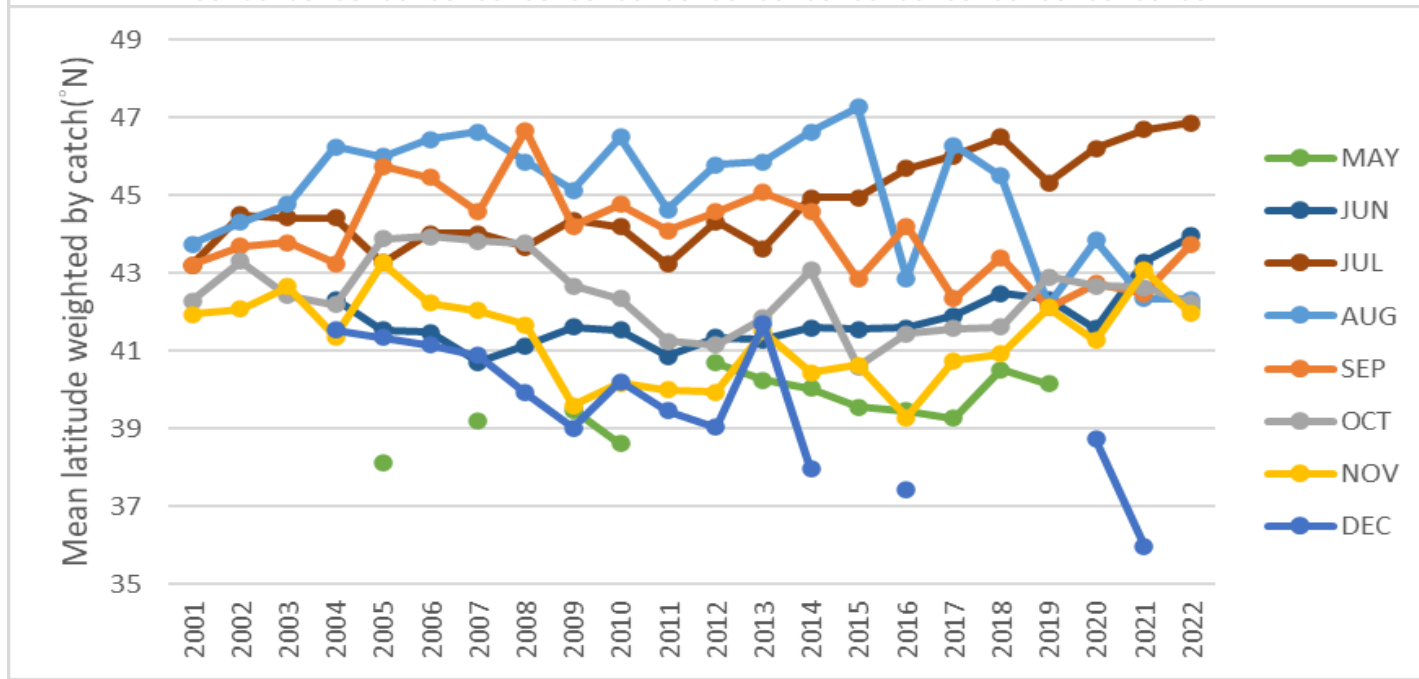
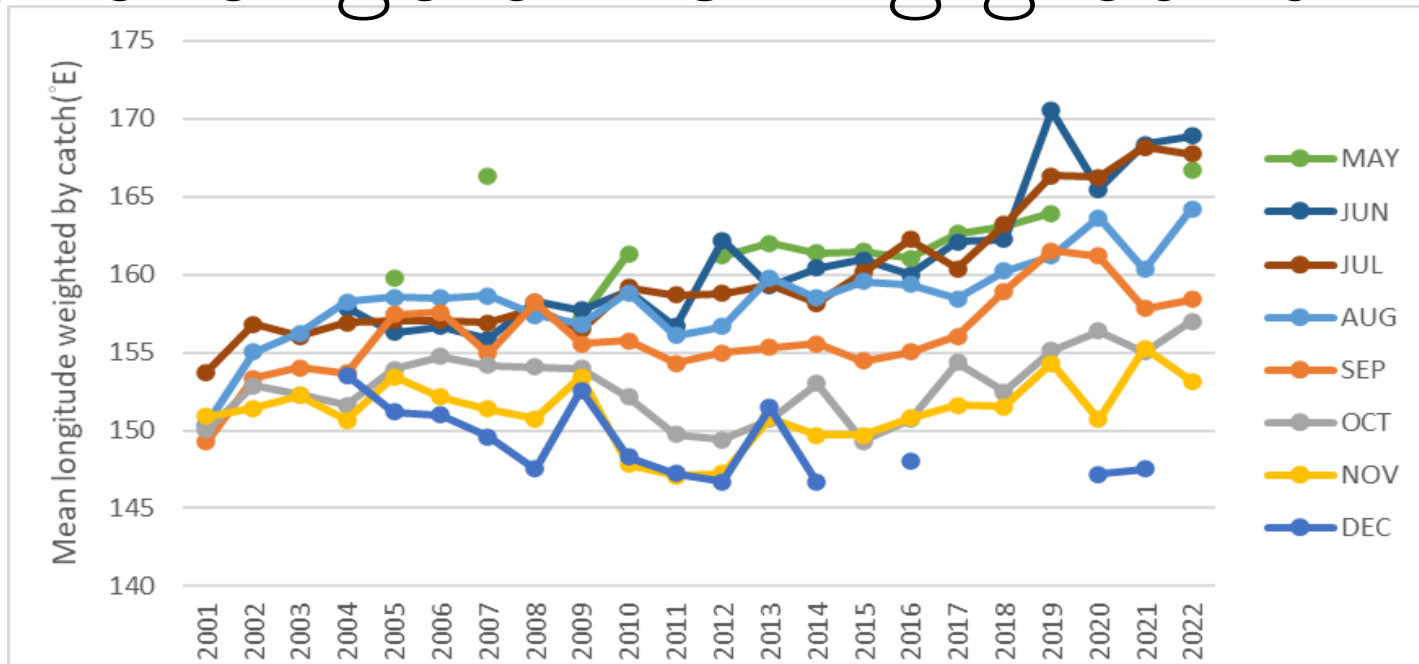
- The nominal CPUE is about 1 tons / haul, which is less than that of the same period last year

Fishing ground



- Comparing with the fishing activities distribution of 2021, it observed that the fishing grounds located more northward in 2022.

Annual change of fishing ground



Summary

- Accumulated catch by the end of November was 40,963 tons, which was more than that of the same period last year (34,040 tons).
- The nominal CPUE is about 1 tons /haul in 2022 (1.05 tons /haul in 2021, 1.89 tons /haul in 2020).

Thank you for your attention