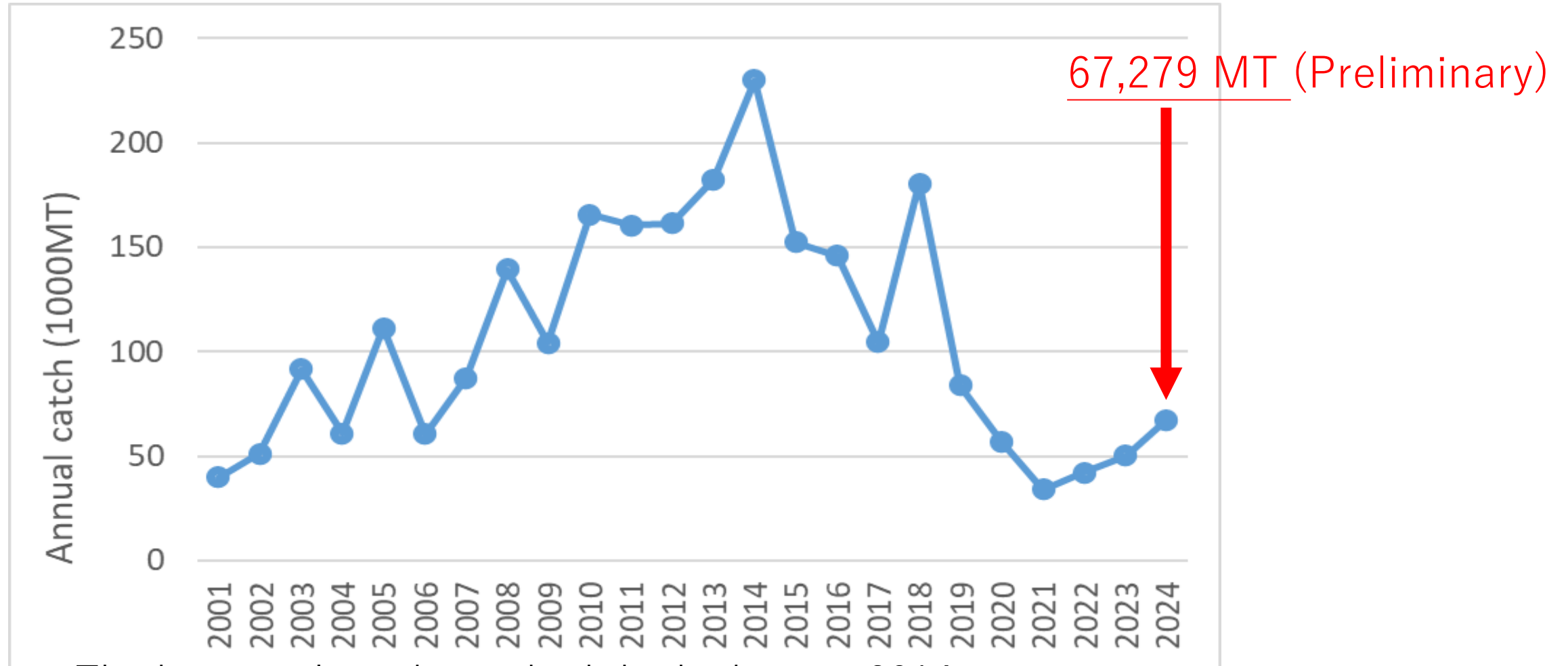


Fishery status for Pacific saury

Report of Chinese Taipei

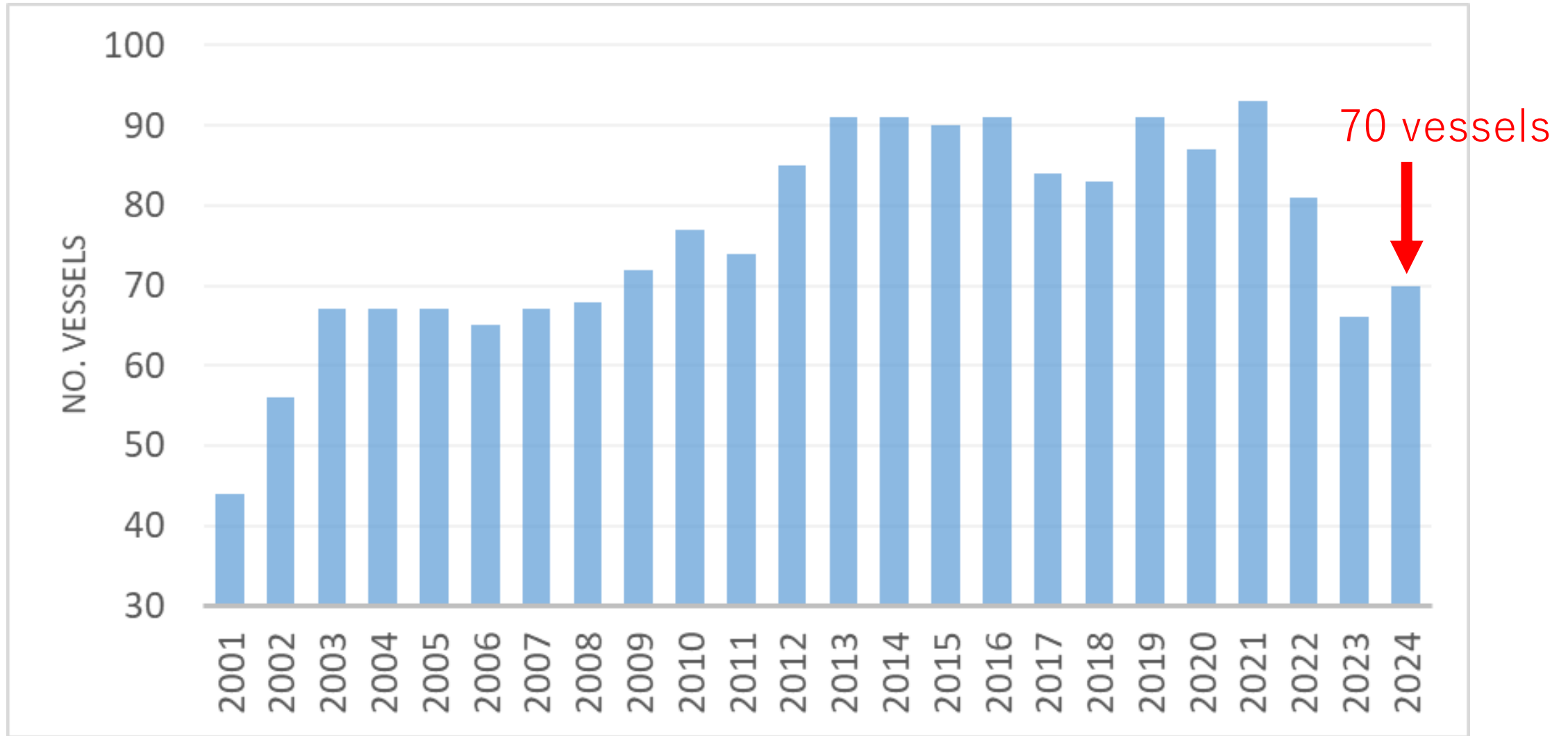


Annual catch series



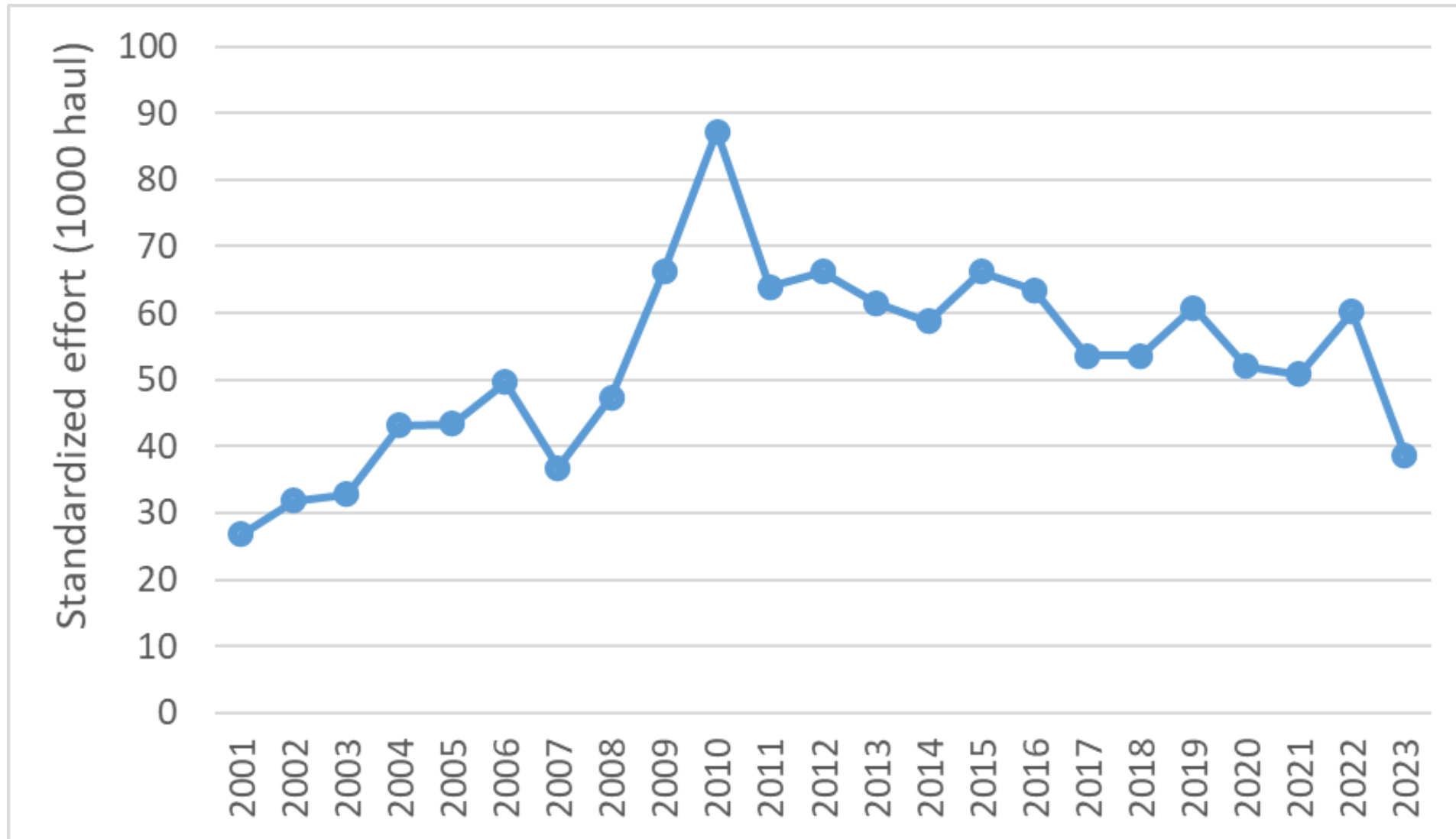
- The historical catch reached the highest in 2014.
- In 2018, the saury catch were around 180,000 tons. Since then, the catch has been decreasing every year until 2021.

Number of vessels



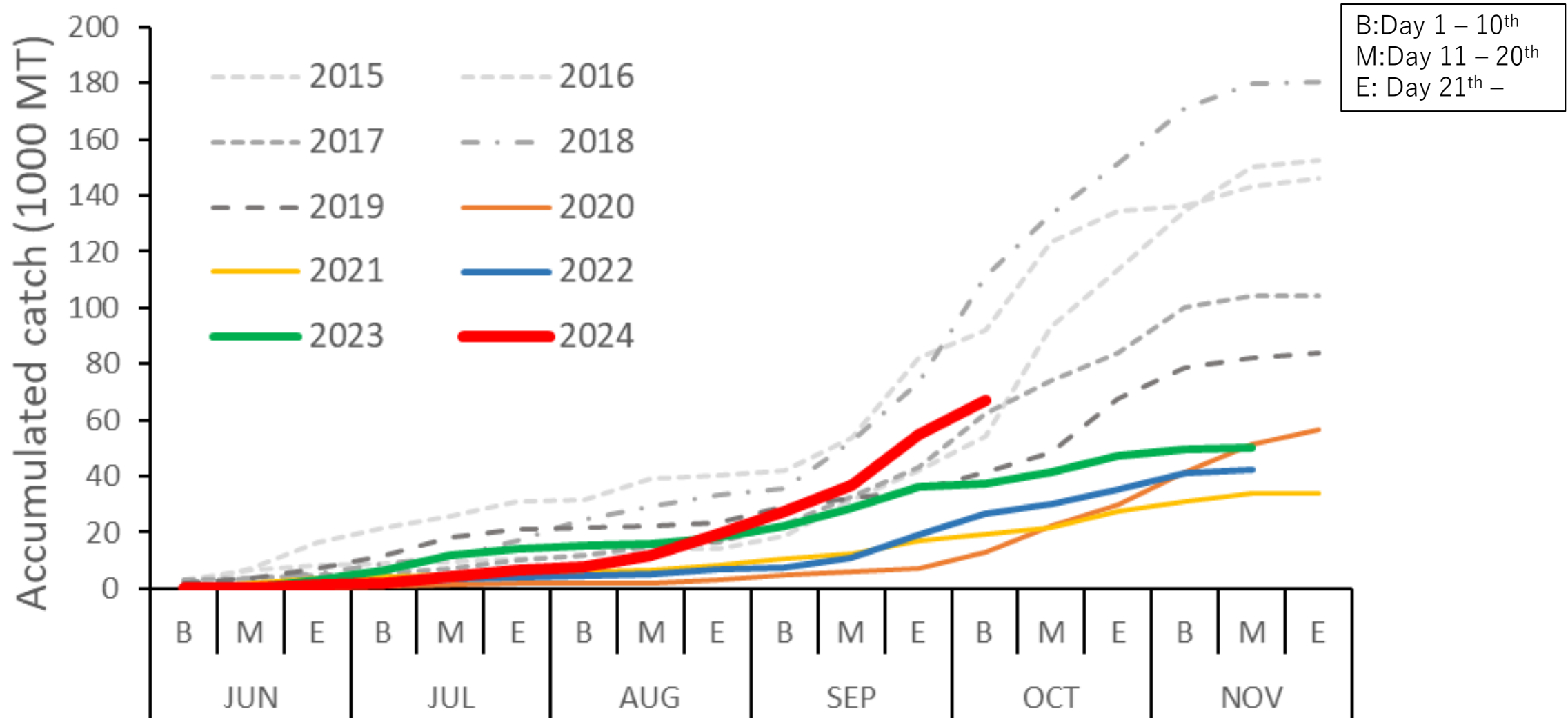
- 93 vessels conducted fishing activities in 2021, and in 2023, the number decreased to 66.

Standardized effort (Catch/stdCPUE)



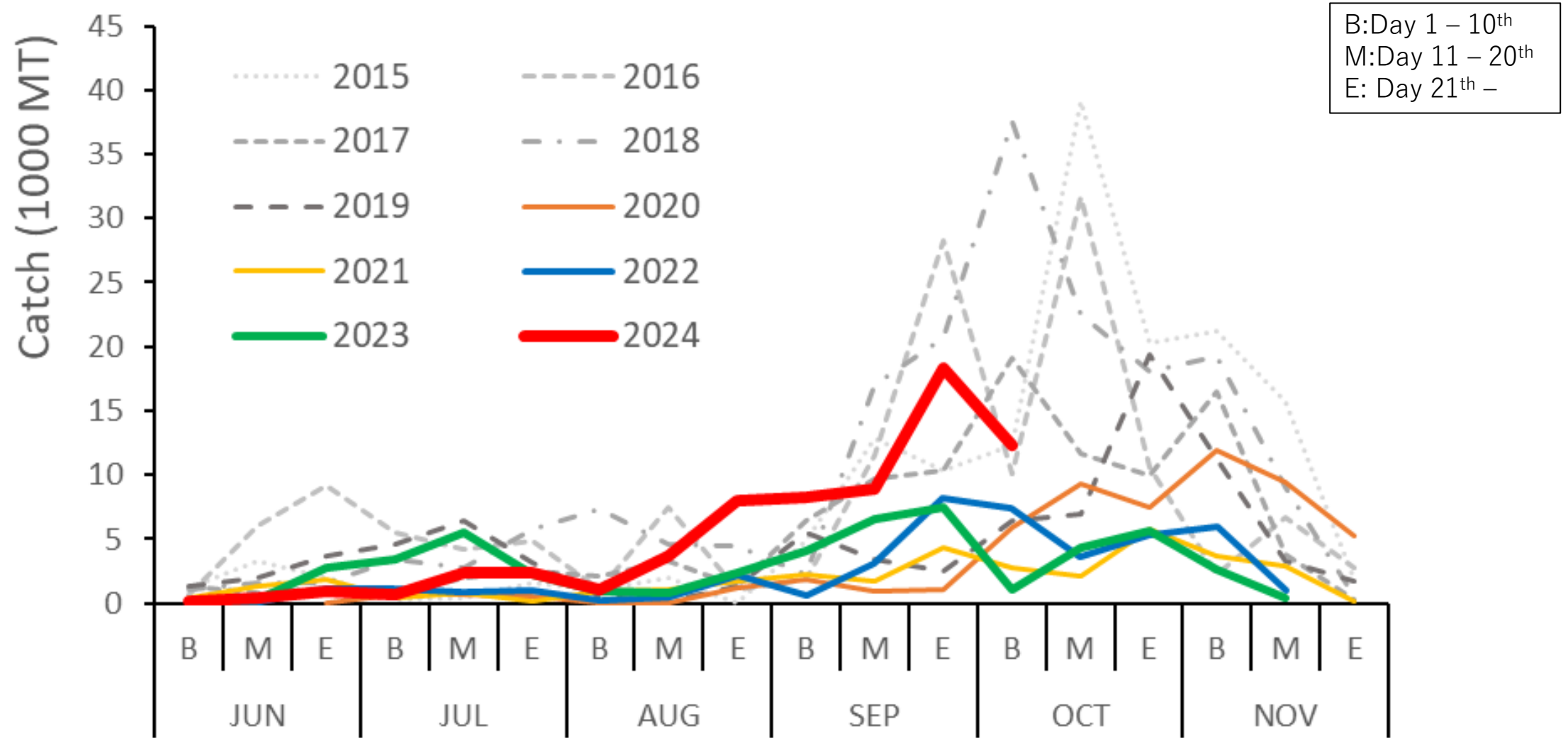
- Standardized effort was 38,667 in 2023.

Accumulated catch

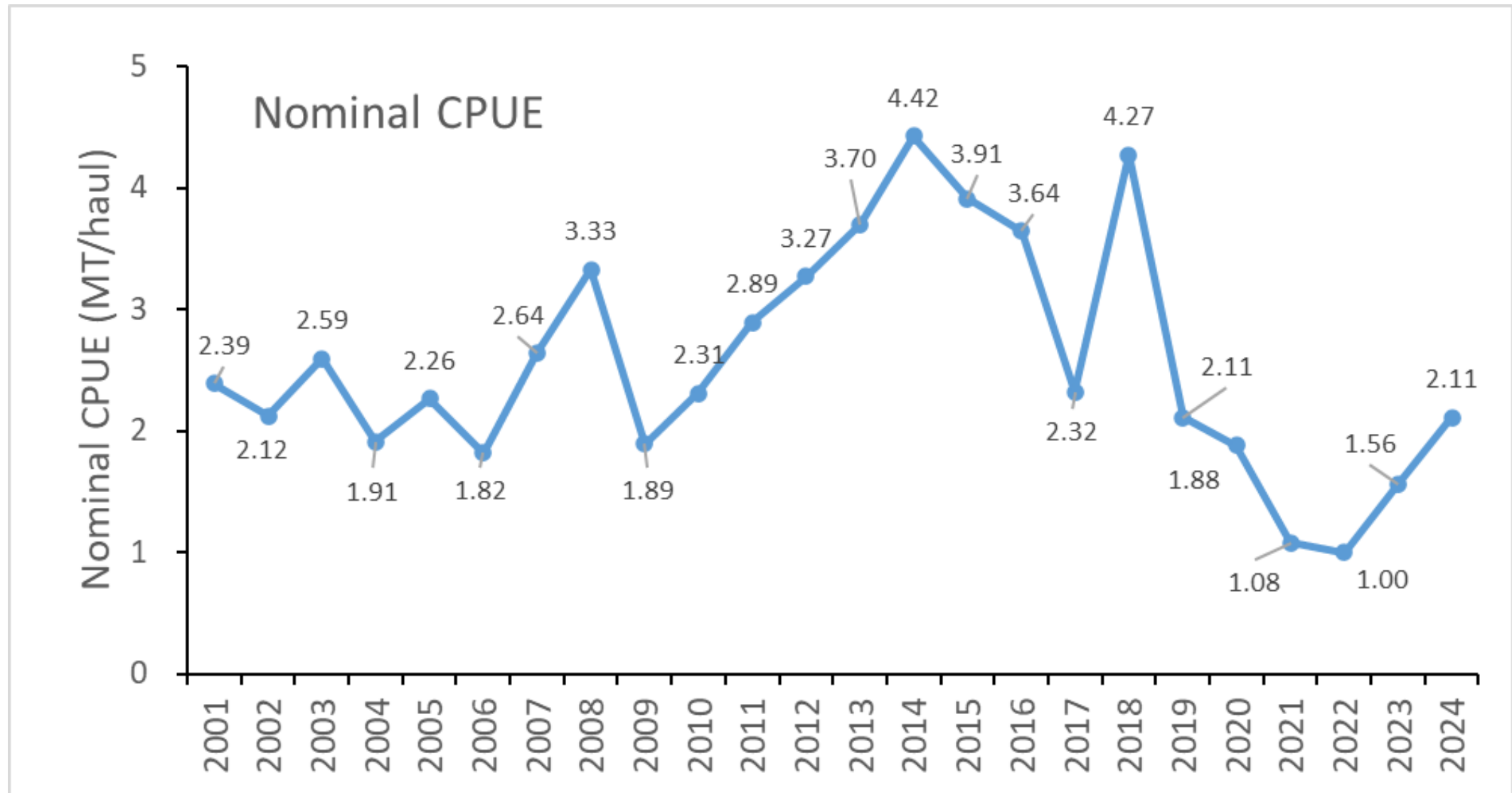


- Accumulated catch by early October was 67,279 tons, which was more than that of the same period last year (37,284 tons).

Seasonal catch

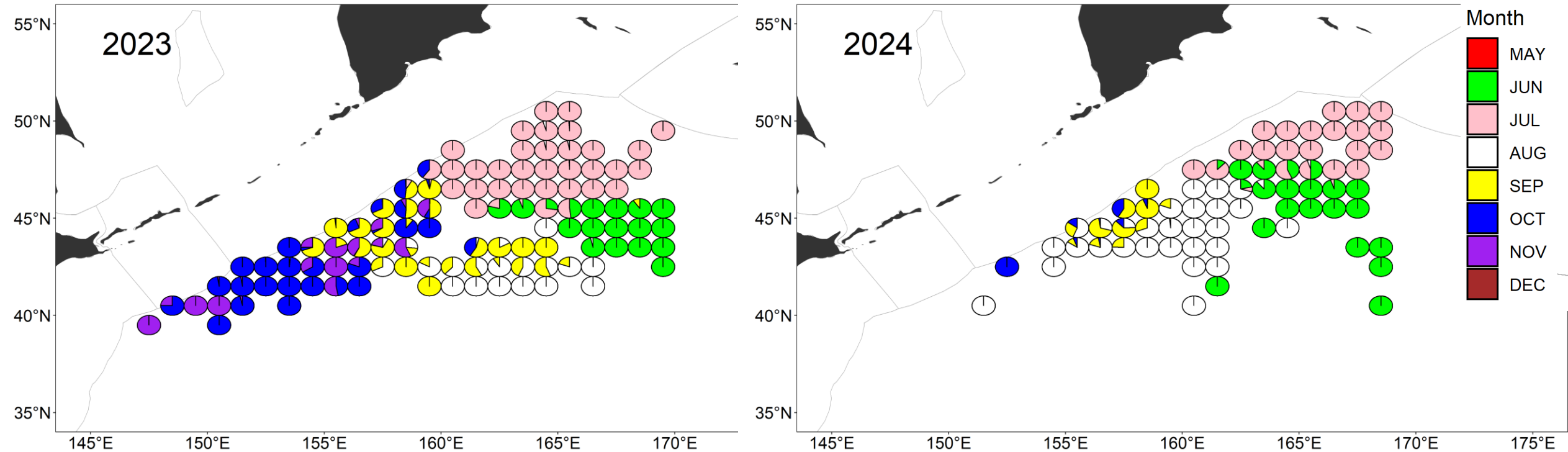


- The catch was more than last year.



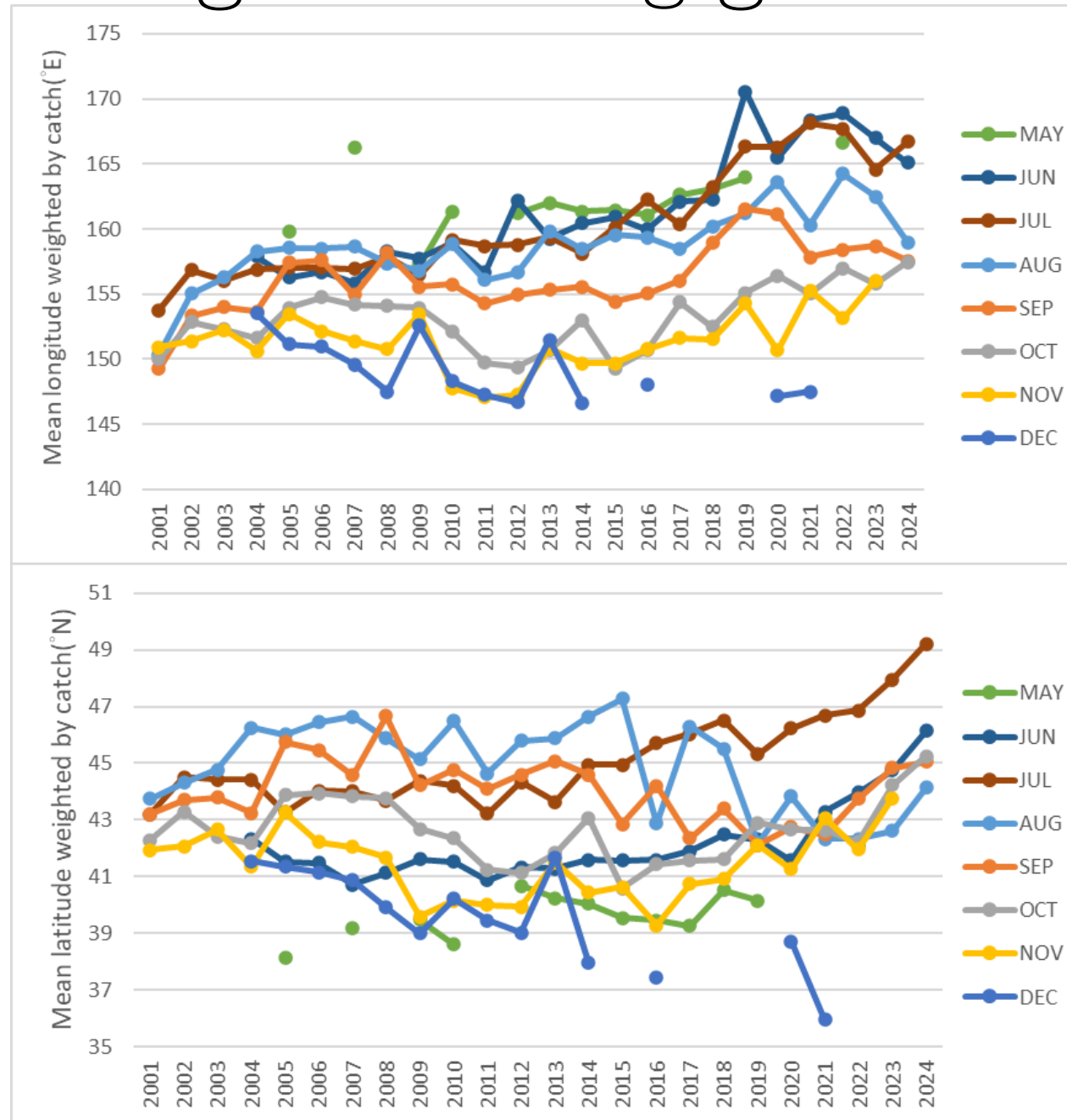
- The nominal CPUE is about 2.11 MT / haul, which is more than that of the same period last year.

Fishing ground



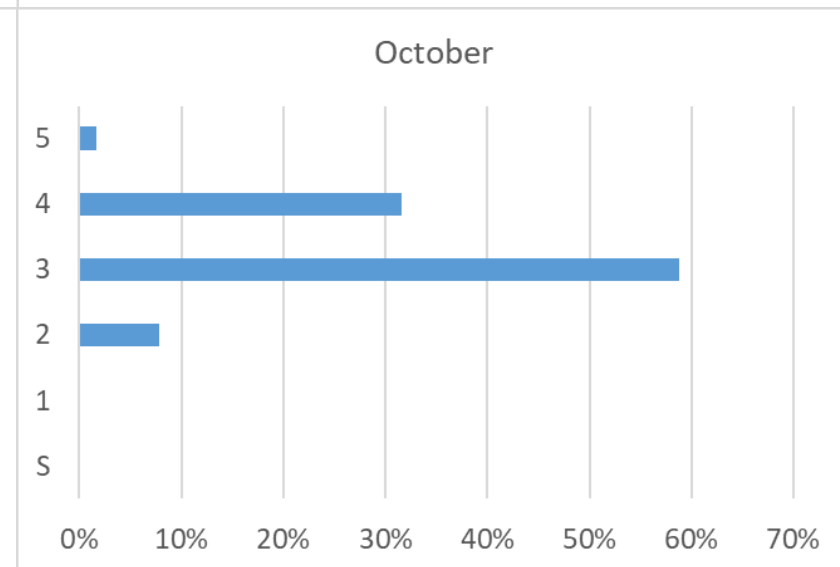
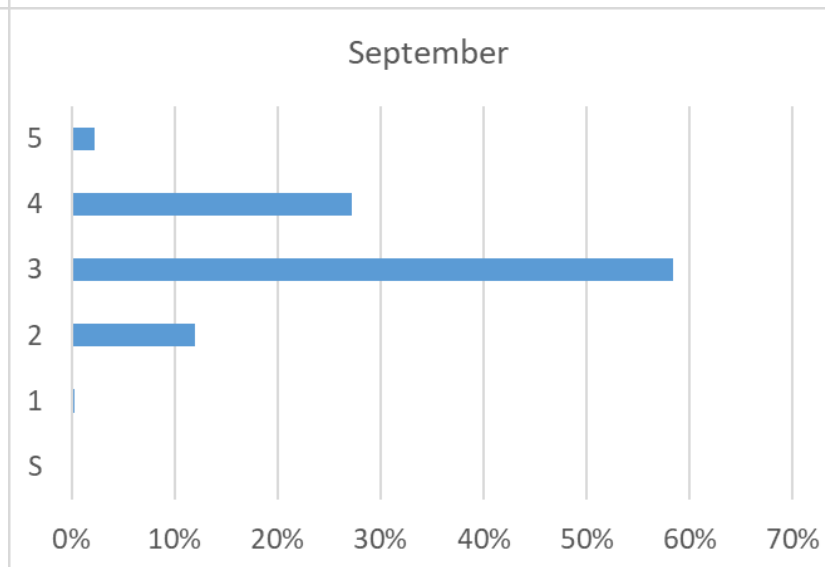
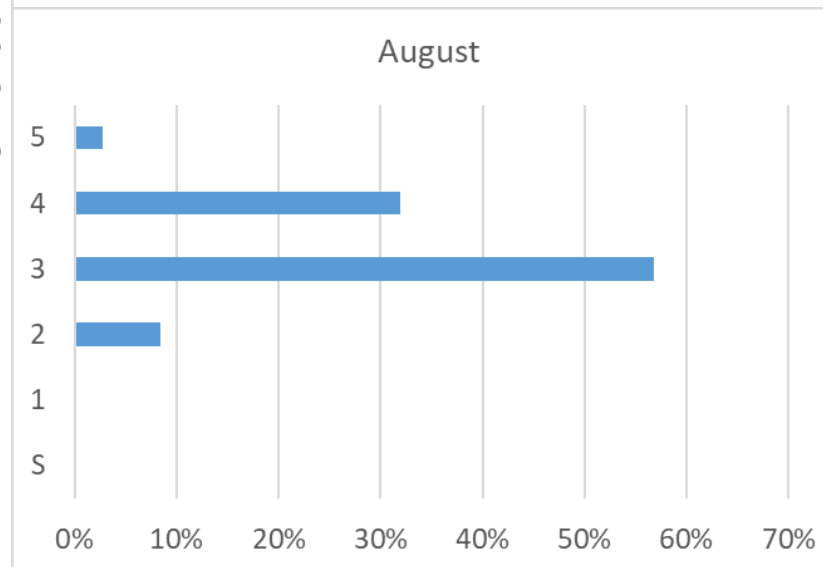
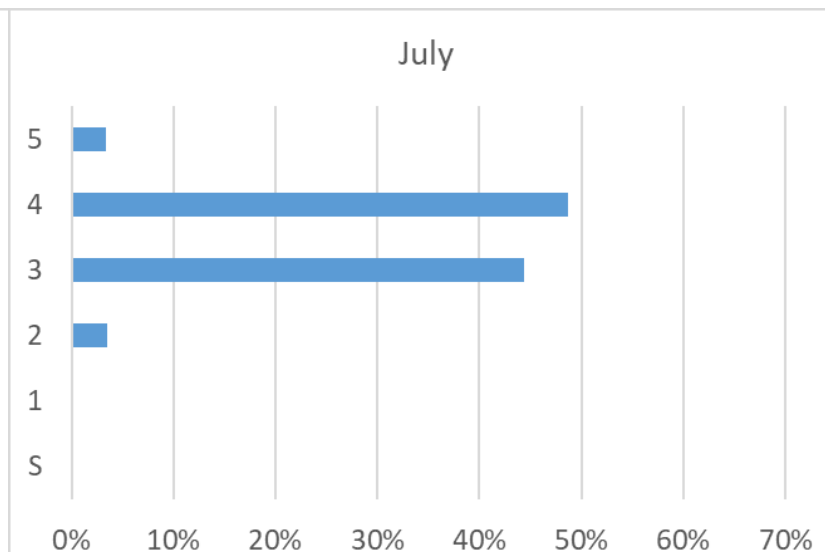
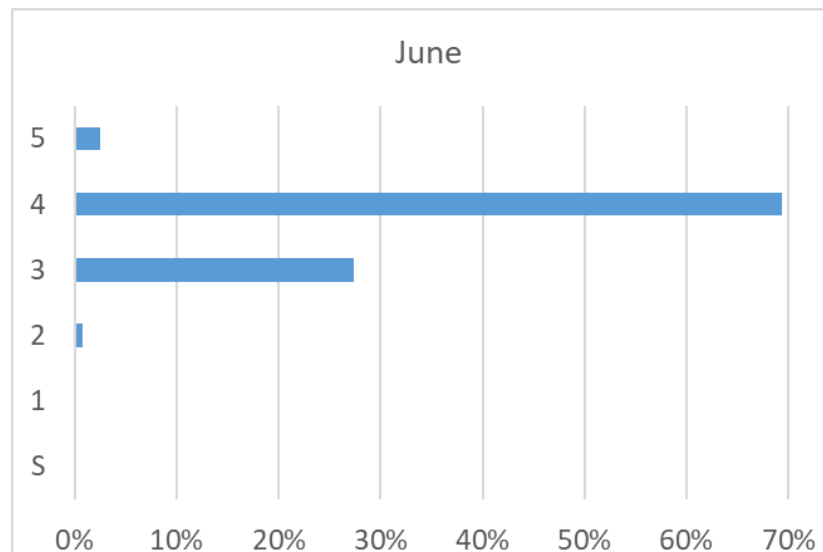
- Compared with the fishing activities distribution of 2023, it was observed that the fishing grounds concentrated northward in 2024.

Annual change of fishing ground



Size box compositions

Size box



Specification definition :

S : less than 6 pcs/kg

1 : 7~9 pcs/kg

2 : 10~12 pcs/kg

3 : 13~15 pcs/kg

4 : 16~18 pcs/kg

5 : more than 19 pcs/kg

percentage

year/species	2024
	Bycatch
mackerel	12.86
sardine	2.87
squid	2.25
other	-
Total	18.0

unit: MT

***Preliminary data**

Bycatch rate only accounts for 0.027% of the total catch

Summary

- Accumulated catch by the early of October was 67,279 tons, which was more than that of the same period last year (37,284 tons).
- The nominal CPUE is about 2.11 MT /haul in 2024 (1.56 MT /haul in 2023, 1 MT /haul in 2022).

Thank you for your attention