

## 6.2 Updated Species Summary of Blue Mackerel



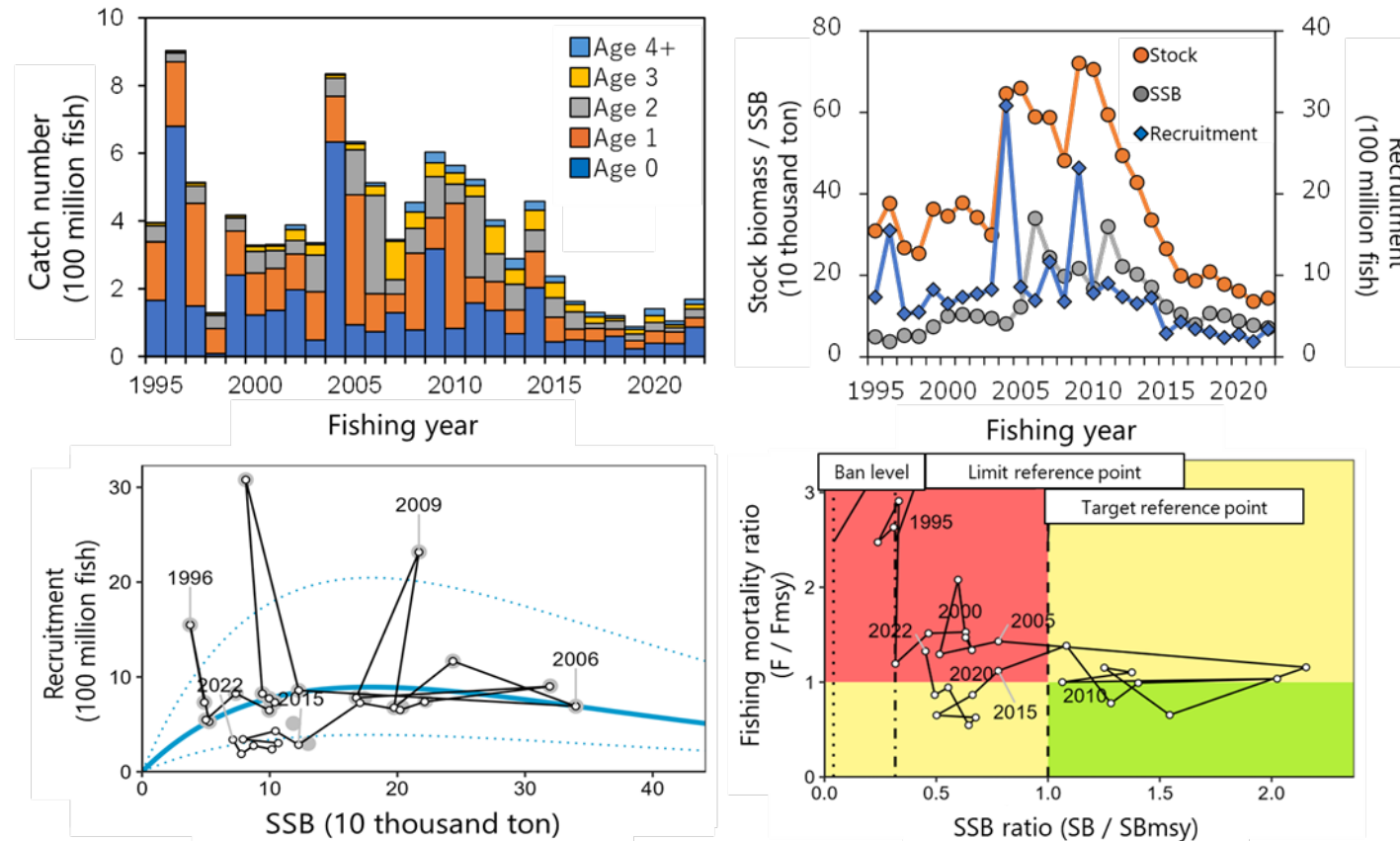
Kazunari Higashiguchi  
(Japan Fisheries Research and Education Agency)

# Major Revisions from the last year

1. Updated the results of the latest Japanese domestic stock assessment
2. Updated the result of standardization for Blue mackerel eggs
3. Deleted China's data due to authorization issues
4. Clearly stated that Russia's catch is negligible

# Japanese domestic stock assessment of BM

## No significant updates to the stock assessment methodology

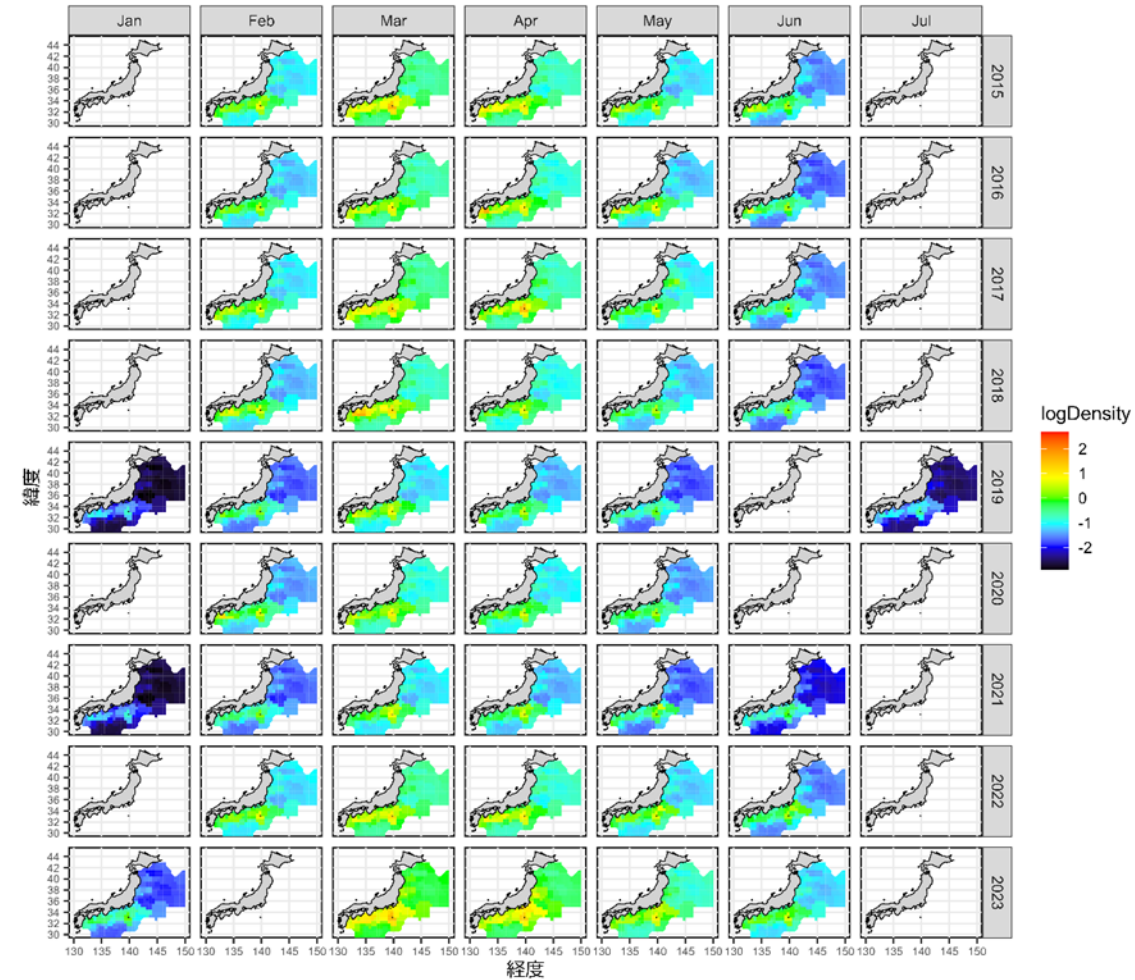
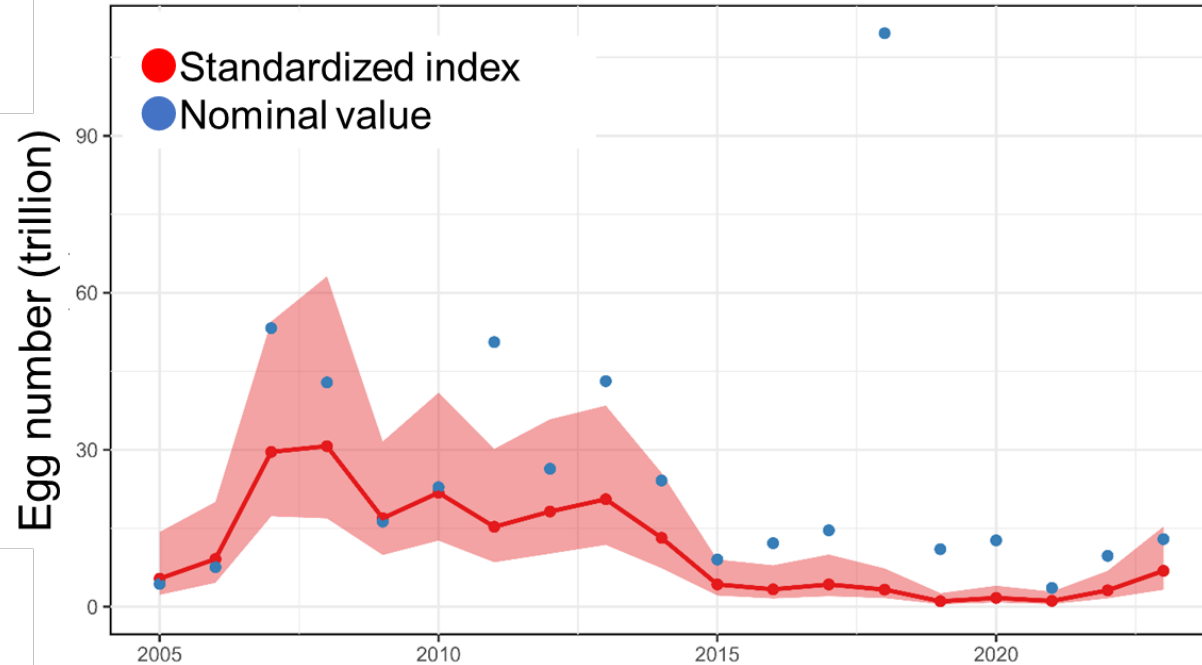


Summary of the stock assessment for the Pacific stock of BM in Japan (Kamimura et al. 2024). (a) Time series of catch number by age. (b) Estimated biomass, SSB, and recruitment. (c) Stock-recruitment relationship. (d) Kobe plot.

# Spatio-temporal distributions of BM eggs

## No significant updates to the standardization methodology

- Analyzed by the VAST model (see details in Kanamori et al. 2021, Fish.Res.)
- Will be informative for the interannual change of spawning potential and spawning seasons and grounds



# Catch statistics for each member

Members that constitute a high proportion of the mackerel catch in the NPFC area:

China, Russia, Japan

## **China**

The data is ready, but its sharing is not authorized by the authorities

→China's data was deleted

## **Russia**

BM catch is negligible, and fishermen do not separate these two species

→Clearly stated that Russia's catch is negligible

## **Japan**

Publicly available, but the documents are written in Japanese