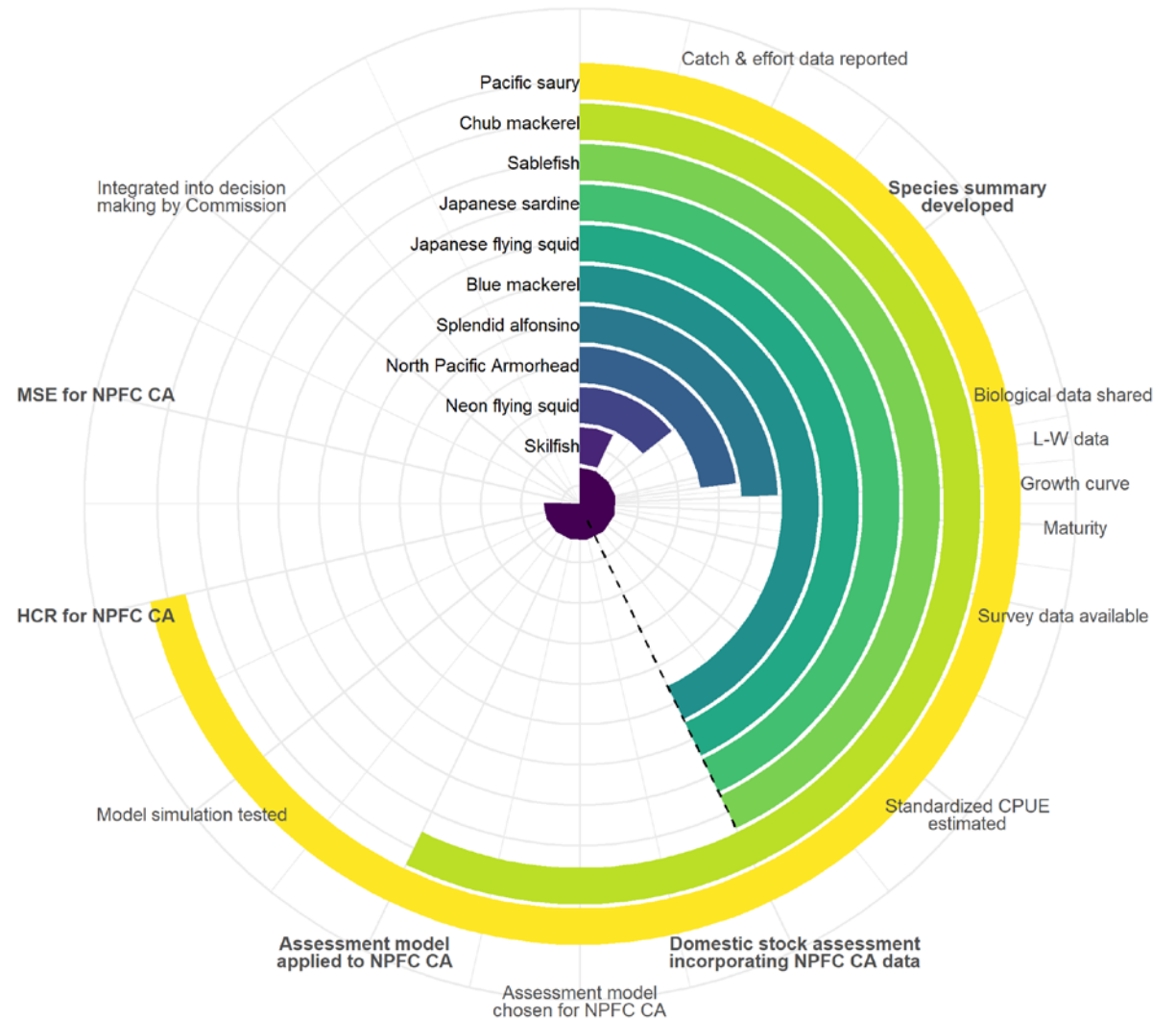


SWG Milestones

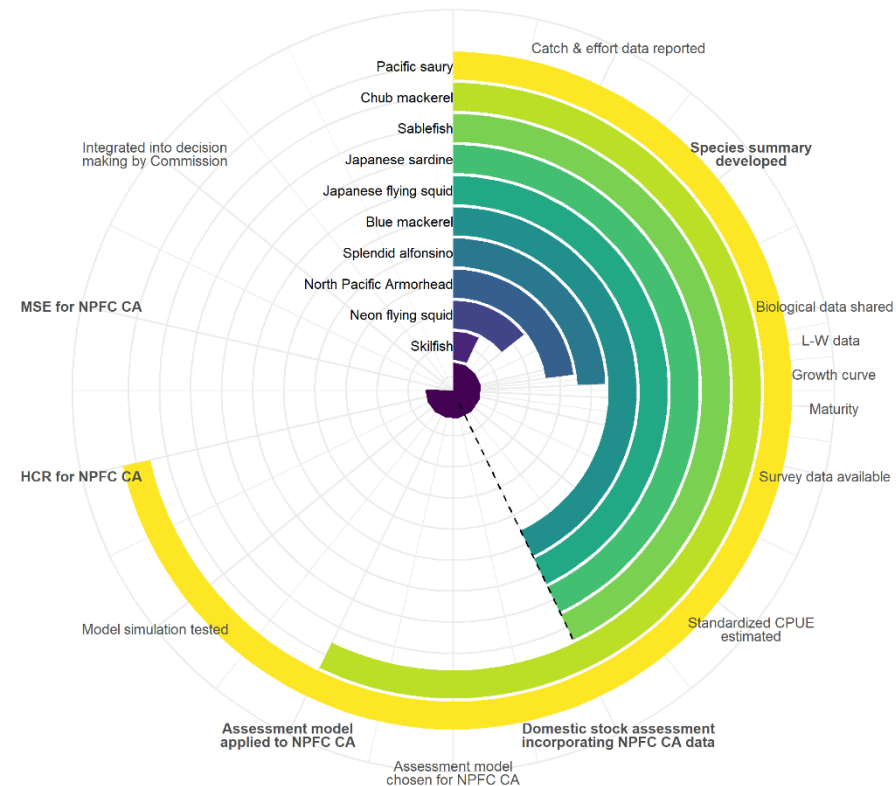


Our task from the SC

- develop a set of **common milestones** for determining stock status for NPFC priority species
- develop a **plan and timeline** to achieve the assessment of stock status
- develop and implement a **common set of data sharing templates** that would enable the NPFC to more efficiently manage and distribute data on each of the stocks
- **present** the outcomes of their work at SC09 in December 2024.

SWG Milestones

- Meeting on July 12, 2024 (virtual)
- Revised and finalized report via email



Draft Agenda

¶

Agenda 1. Opening of the meeting¶

→ Participants introduce themselves¶

Agenda 2. Adoption of Agenda¶

Agenda 3. Review of Report¶

The co-chairs will lead participants will review the pathways for species stock assessment (current and proposed—Figures 2 and 3)¶

The co-chair (Chris) and participants will briefly review the timelines and deliverables for each species (Tables 1-11)¶

Agenda 4. Review of scientific data workflow status and future tasks¶

Secretariat will describe the current scientific data workflow (Table 12 and Figure 4)¶

The co-chair (Karolina) will lead participants in a discussion of data templates and data needs¶

Agenda 5. Recommendations¶

Participants will review the recommendations in the report and suggest any additional recommendations¶

Agenda 6. Proposal for SWG Data¶

Participants will discuss the suggestion for a new SWG to deal with data issues in support of NPFC stock assessment activities¶

Participants will review Annex 1 and revise if needed (dependent on outcome of above item)¶

Agenda 7. Plan for report finalization¶

→ Participants will agree to plan to finalize report for presentation at SC09¶

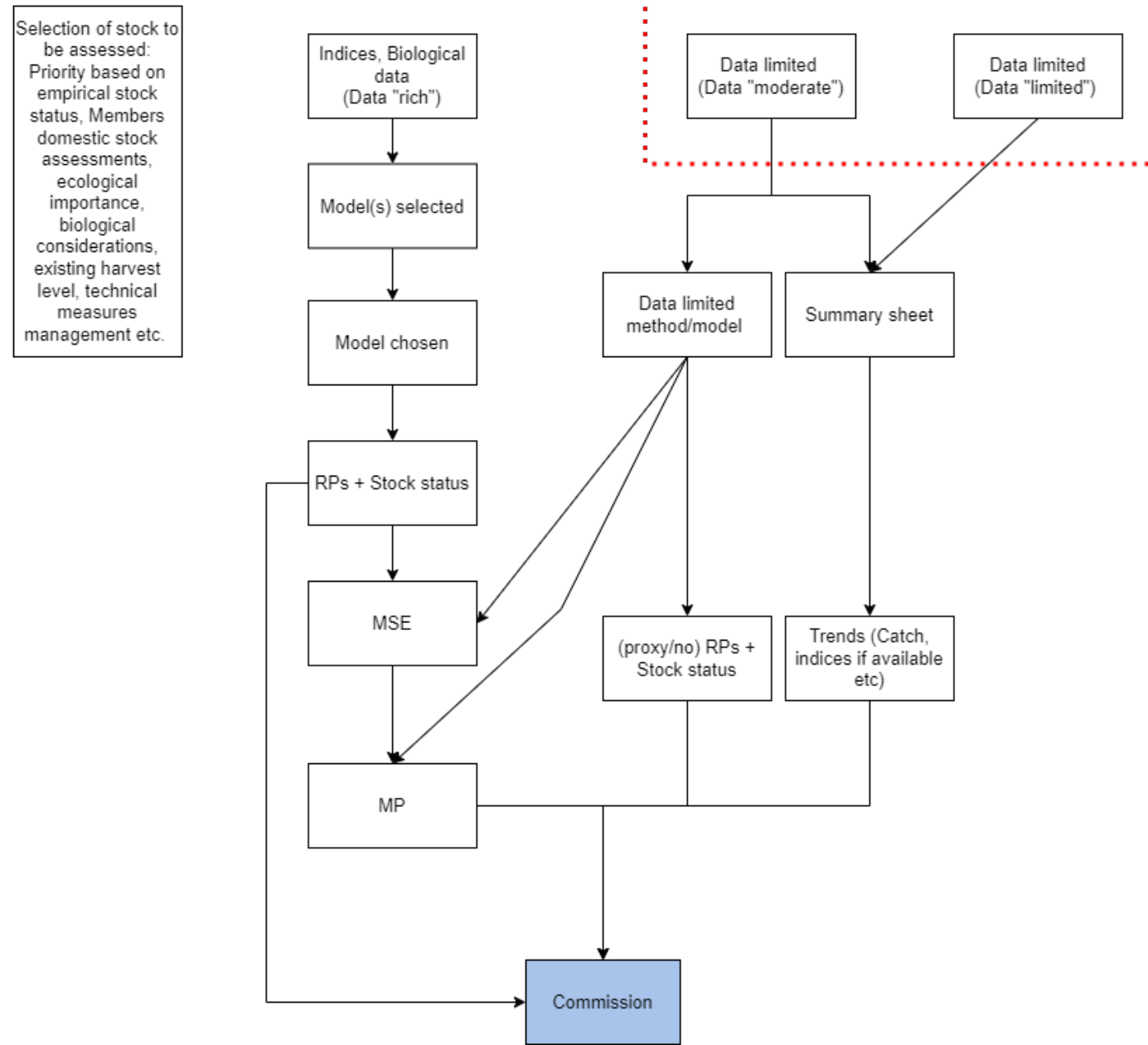
Agenda 8. Other matters¶

Agenda 9. Closing of the meeting¶

Common milestones - Pathways

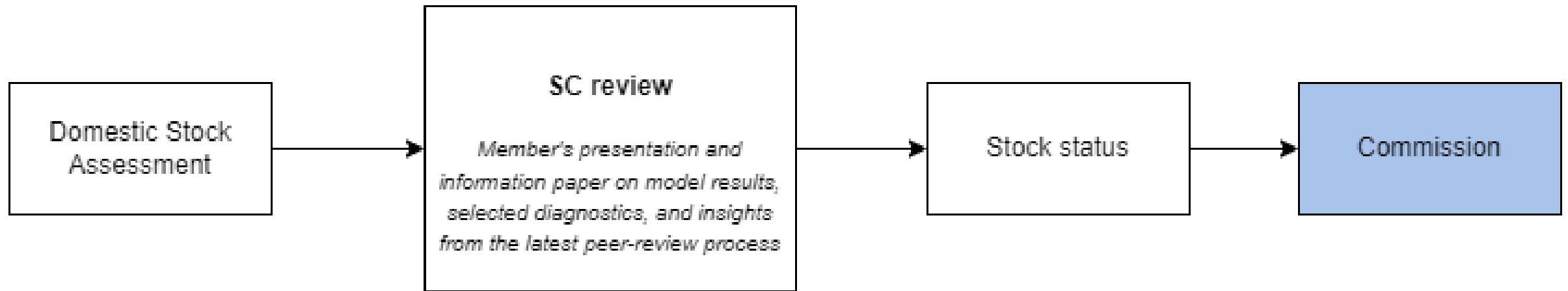
Data inventory

Proposed assessment
pathway for species
assessed by NPFC



Common milestones - Pathways

Proposed assessment
pathway for species
assessed by Members



Tables of milestones

Data rich species

Pacific saury

Deliverable	Anticipated timeline	Responsible group
Age structured assessment/operating model	SC10 (2025)?	SSC PS
Full MSE	SC10 (2025)?	SWG MSE, SSC PS
Assessment update	Annually	SSC PS
MSE update	3-5 year cycle	SWG MSE, SSC PS

Chub mackerel

Deliverable	Anticipated timeline	Responsible group
Age structured assessment	SC09 (2024)	TWG CMSA
Reference points estimated	SC09 (2024)	TWG CMSA
Stock status communicated to the SC and Commission	SC09 (2024)?	TWG CMSA, SC
Assessment update	Annually	TWG CMSA

Tables of milestones – Species with Member assessments

Japanese sardine

Deliverable	Anticipated timeline	Responsible group
Collect and share biological data from CA catch of Japanese sardine	SC09 (2024)	SWG JS
Stock status based on domestic assessment communicated to the SC and Commission	SC09 (2024)	SWG JS, SC

Blue mackerel

Deliverable	Anticipated timeline	Responsible group
Collect and share biological data from CA catch of blue mackerel	SC09 (2024)	SWG BM
Stock status based on domestic assessment communicated to the SC and Commission	SC09 (2024)	SWG BM, SC

Japanese flying squid

Deliverable	Anticipated timeline	Responsible group
Collect and share biological data from CA catch of Japanese flying squid	SC09 (2024)	SWG JFS
Stock status based on domestic assessment communicated to the SC and Commission	SC09 (2024)	SWG JFS, SC

Sablefish

Deliverable	Anticipated timeline	Responsible group
Stock status based on Canadian MSE assessment communicated to the SC and Commission	SC09 (2024)	SSC BFME, SC

Data rich species

Tables of milestones

Data moderate species

Splendid alfonsino

Deliverable	Anticipated timeline	Responsible group
Develop indicators of stock status using life-history based methods	SC09 (2024)	SSC BFME
Develop reference points and HCRs or suitable alternatives	SC10 (2025)	SSC BFME
Stock status reported to SC and Commission	SC09 (2024)	SSC BFME, SC

Neon flying squid

Deliverable	Anticipated timeline	Responsible group
Share all neon flying squid data	SC09 (2024)	SSC NFS
Complete preliminary stock assessment model	SC10 (2025)	SSC NFS
Finalize stock assessment	SC11 (2026)	SSC NFS
Reference points estimated	SC11 (2026)	SSC NFS
Stock status communicated to the SC and Commission	SC11 (2026)	SSC NFS, SC

Tables of milestones

North Pacific armorhead

Deliverable	Anticipated timeline	Responsible group
Trends in catch reported to SC and Commission	SC09 (2024)	SSC BFME, SC
Develop indicators of historical and current biomass based on depletion method	SC10 (2025)	SSC BFME
Develop indicators of recruitment from individual based model	SC10 (2025)	SSC BFME
Stock status and/or trends in catch reported to SC and Commission	SC10 (2025)	SSC BFME, SC

Data limited species

Rougheye and Blackspotted Rockfishes

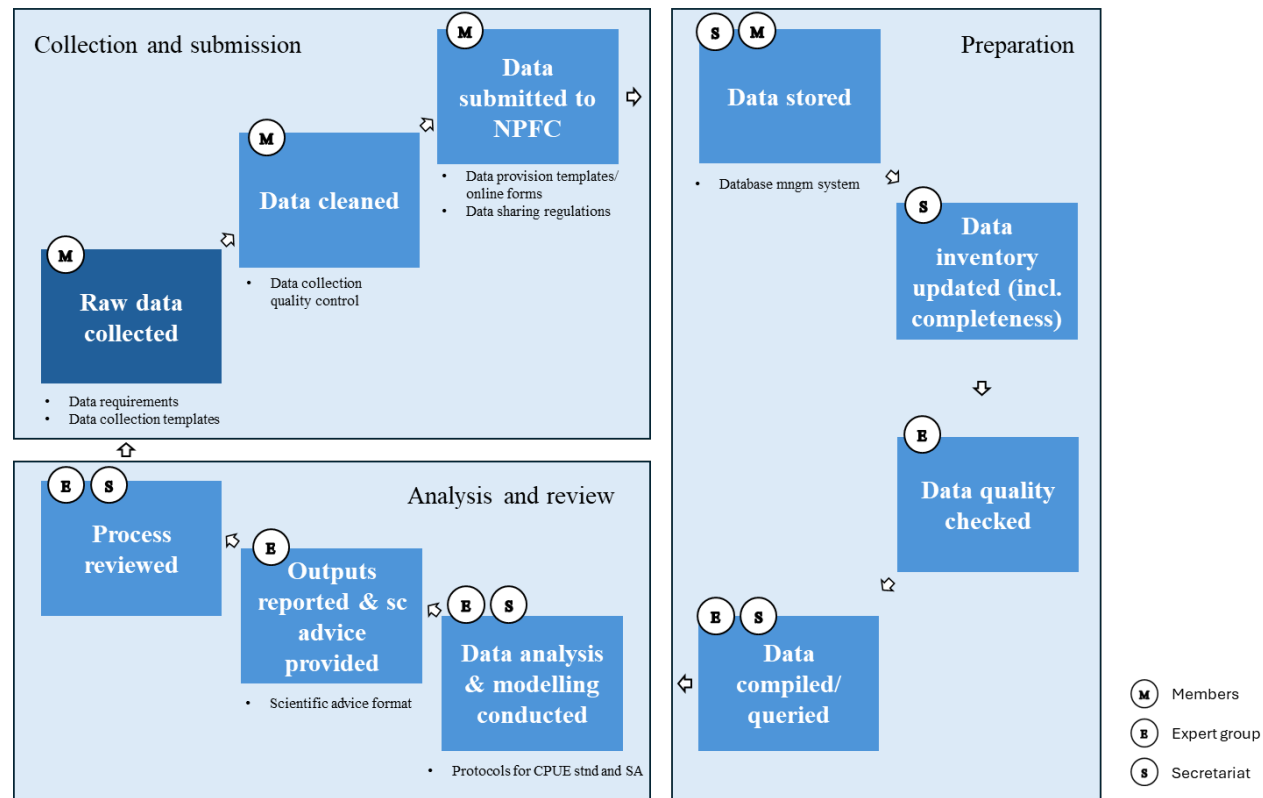
Deliverable	Anticipated timeline	Responsible group
Continue to report trends in catch and effort to SC	SC09 (2024)	SSC BFME, SC

Skilfish

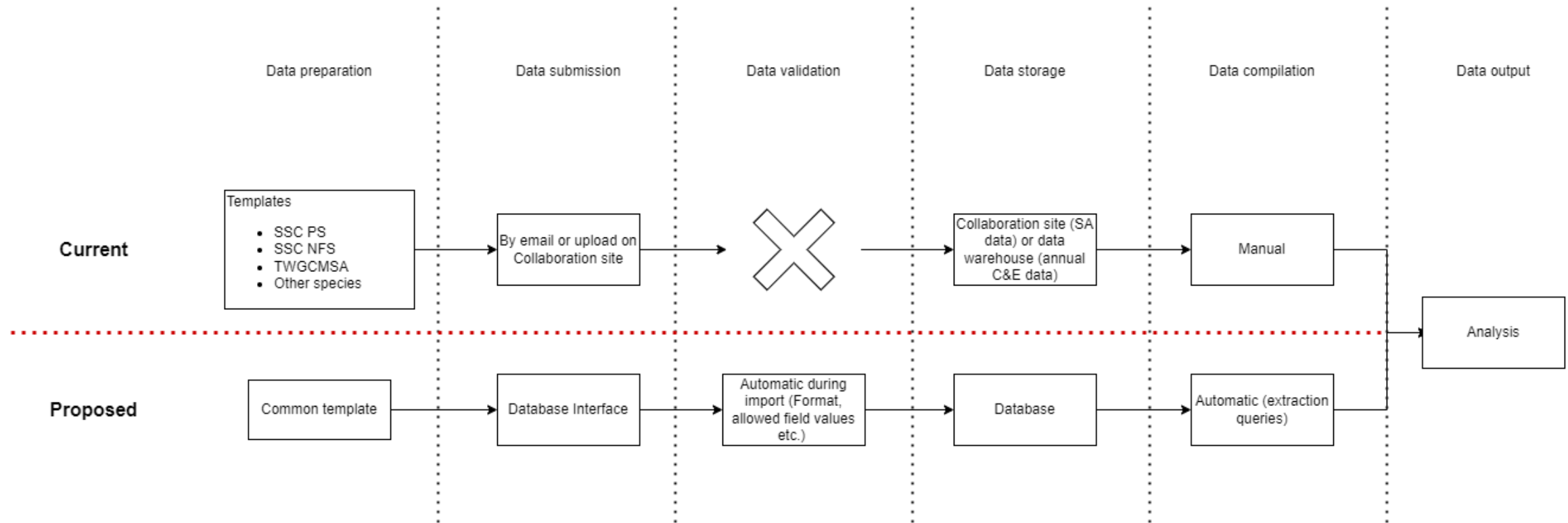
Deliverable	Anticipated timeline	Responsible group
Develop species summary document for skilfish	SC09 (2024)	SSC BFME
Report trends in catch and effort to SC and Commission	SC09 (2024)	SSC BFME, SC

Data workflow and future tasks

Scientific data workflow



Data workflow and future tasks



[SWG] Data

WG would

- examine our existing data streams and make them work better for NPFC data manager
- alleviate the workload from the stock assessment groups (while maintaining close collaboration)
- address the numerous data-related aspects of stock assessment
- other RFMOs have established similar working groups for this purpose

[SWG] Data

Draft TOR

- 1) Compile an inventory of Members' data collection programs
 - a. Review existing observer programs of Members and other RFMOs
 - b. Update the inventory when needed to reflect changes in Members' sampling schemes.
- 2) Assist the SC's subsidiary groups in collecting information on data needs
 - a. Develop a template for the subsidiary groups to quickly report the required information
 - b. Assist the subsidiary groups in filling data gaps where they exist
- 3) Assist the secretariat in creating a data management system, including data collection, verification, reporting, storing, and dissemination
 - a. Discuss the creation of a relational database for data storage and what the necessary steps would be
 - b. Continue developing data provision templates, incorporating feedback from the SC's subsidiary bodies.

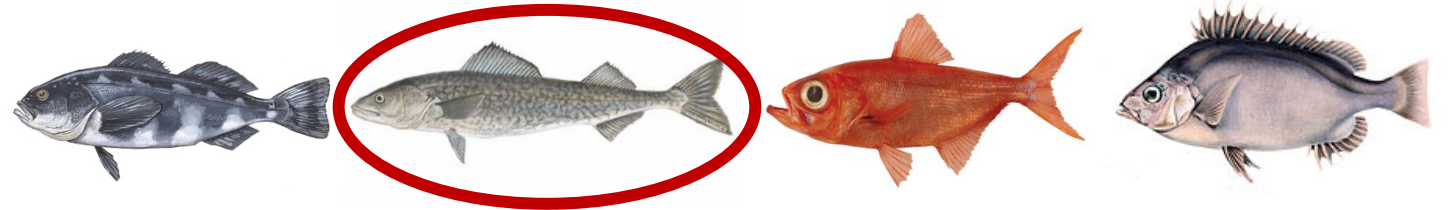
Recommendations

1. Prioritize development of stock assessment activity for stocks without domestic assessments
2. Use Members assessments to monitor those species for which these exist
3. Streamline reporting to Commission from the SC
 - a. Statements of status for each species (e.g. saury text, NPA text)
 - b. Time series of catch, effort for all species (with pictures)
 - c. CPUE standardized or biomass (if model) where available
4. Review scientific data workflow (Table 12) and prioritize future tasks
5. Establish [SWG] Data with the attached terms of reference (Annex 1)
6. Share data using standardized data sharing templates to streamline process for Secretariat to compile and store data
7. Implement an external peer-review [5-10][3-5] year stock assessment review cycle for species assessed by the NPFC
8. Share existing biological data from the fisheries catch in the CA and the adjacent EEZs with the Secretariat
9. Consider collecting additional biological data from new surveys and the catch in the CA for species with a stock assessment (both domestic and NPFC)
10. Consider assessing the impacts of climate change on the ecosystem as well as stocks and fisheries in the species summary for each species



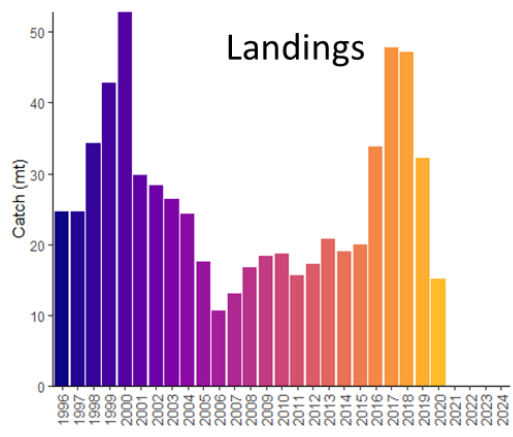
Small Scientific Committee on Bottom Fish & Marine Ecosystems (SSC BF-ME)

Chair: Dr. Chris Rooper (Canada)

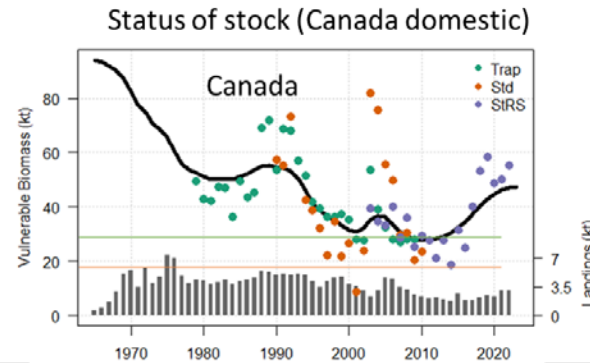


Sablefish

Convention Area



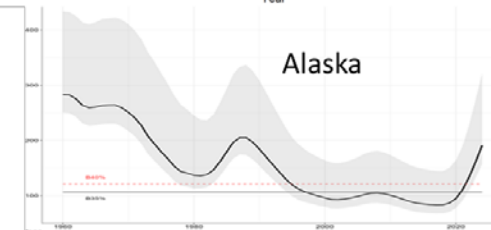
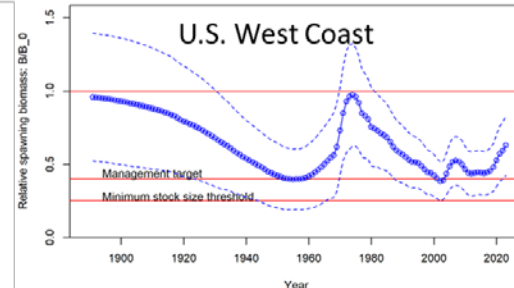
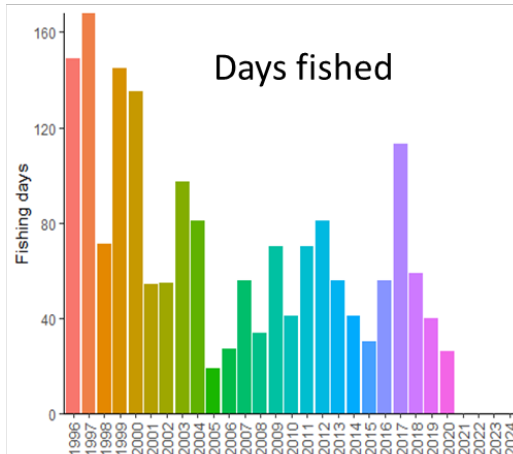
Domestic Assessment



Comments on Status

- Fish stock healthy
- No CA fishing since 2020
- Economically not profitable
- Likely no fishing in 2025

Days fished



la fin

끝

結束

конец

το τέλος

the end

終わり