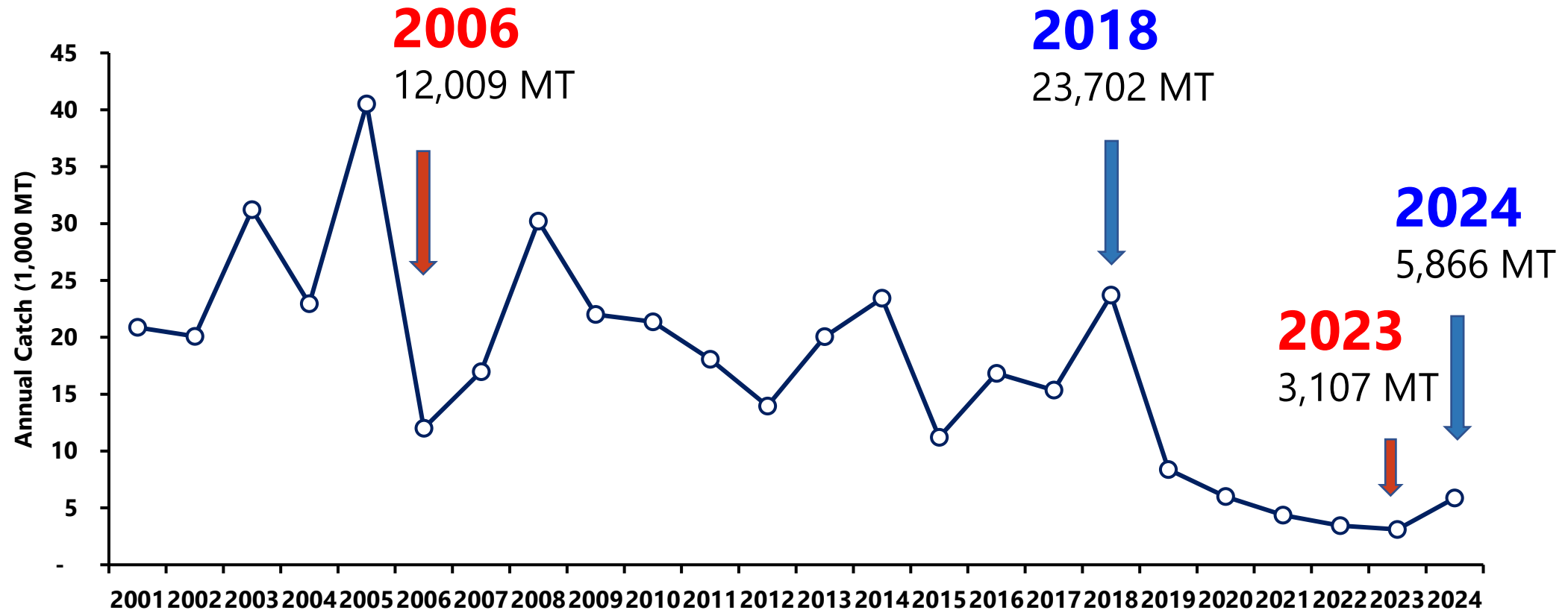


# **Korean Stick-held dip net (SHDN) Fishery Status up to 2024**

**National Institute of Fisheries Science**

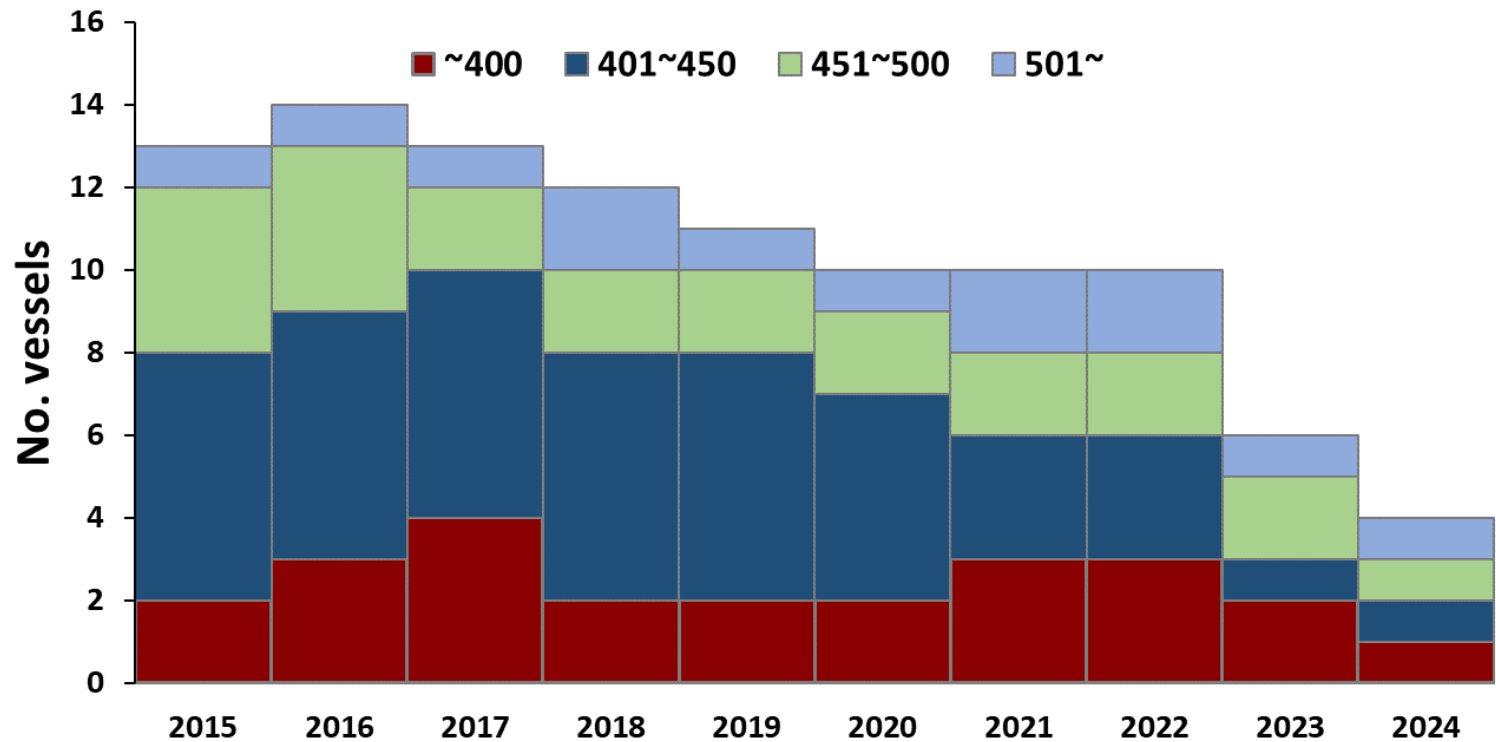
**Republic of Korea**

# Pacific Saury Annual Catch



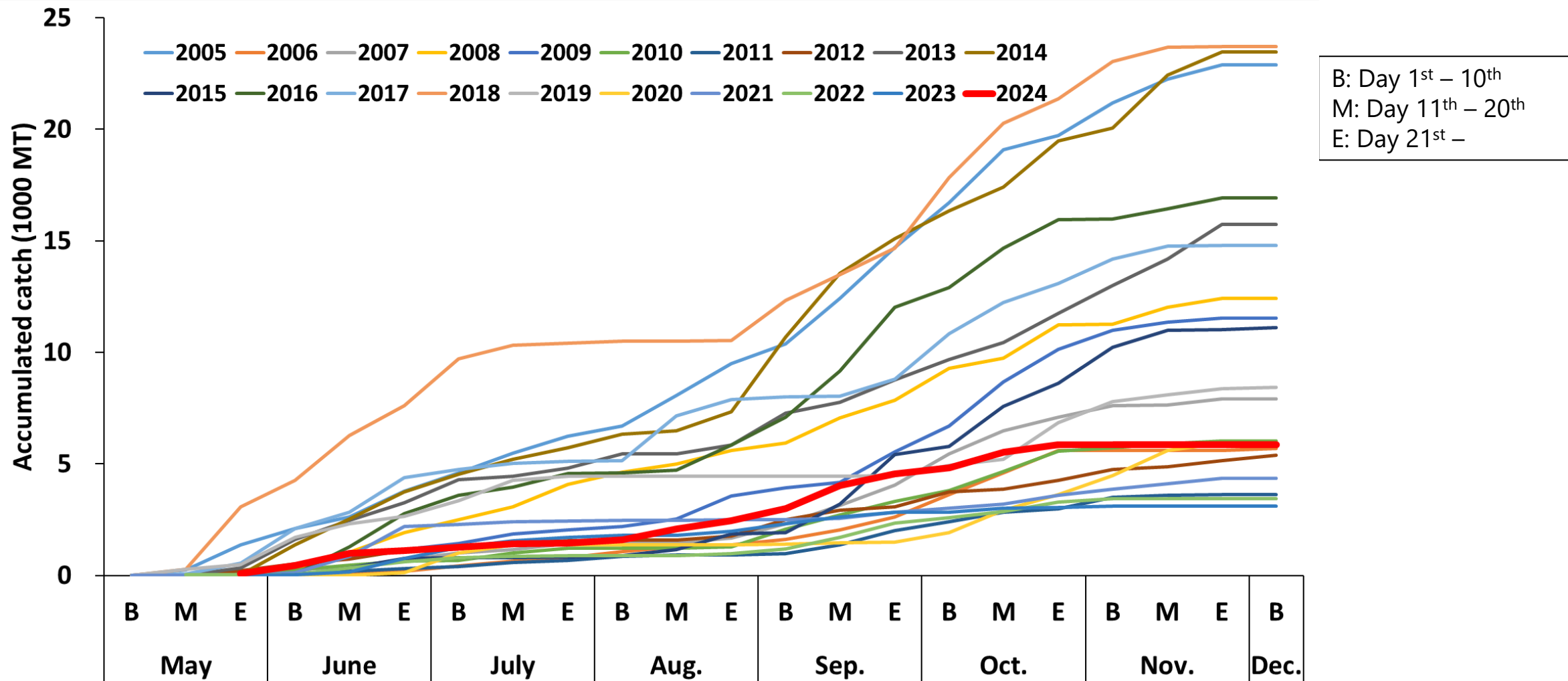
- The annual catch has continued to decrease since 2018
- Total catch in 2023 was 3,107 MT (Lowest ever), and the total catch in 2024 (5,866MT) increased by approximately 90% compared to the previous year

# Number of Korean SHDN Vessels



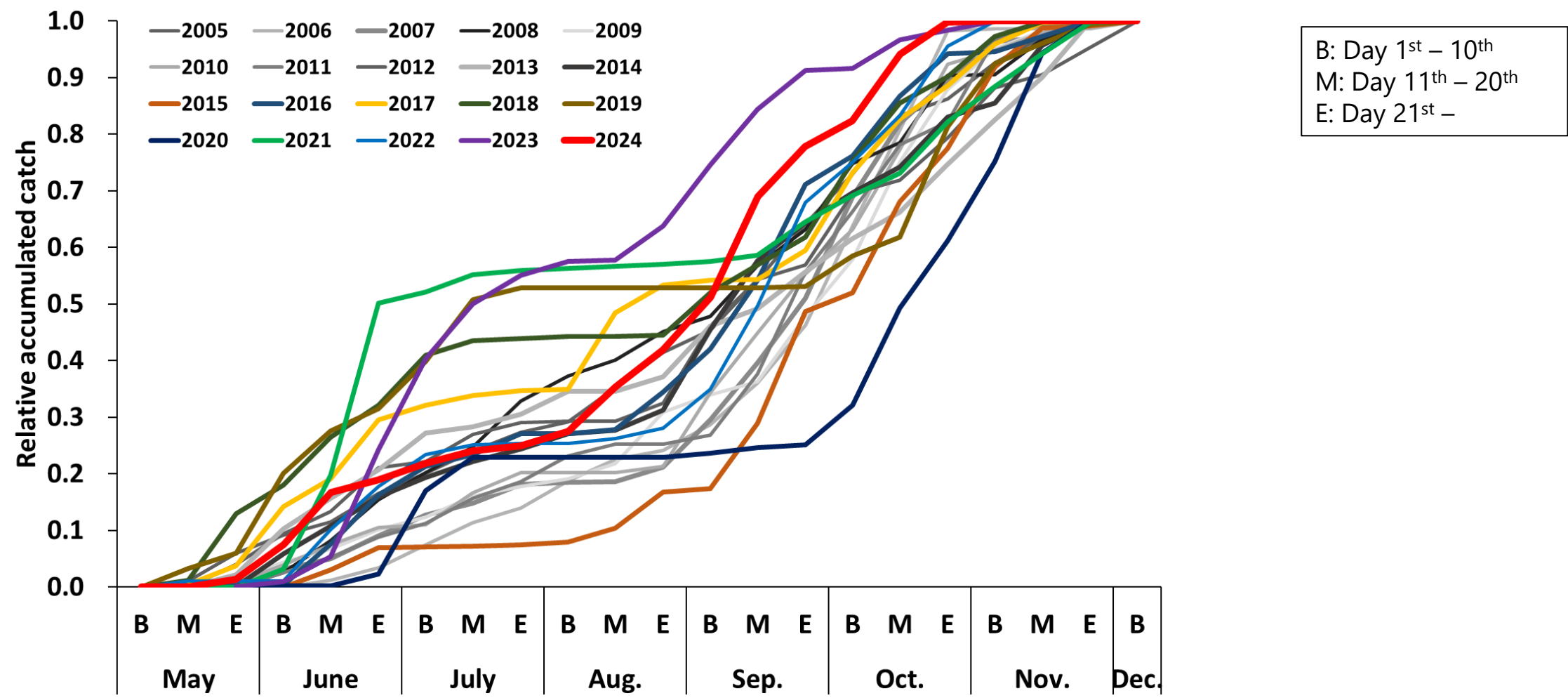
GT	2021	2022	2023	2024
~400	3	3	2	1
401~450	3	3	1	1
451~500	2	2	2	1
501~	2	2	1	2
Total	10	10	6	5

- 14 to 10 SHDN vessels operated from 2015 to 2022 each year.
- The number of Korean SHDN Vessels has decreased gradually.
- In 2024, 5 fishing vessels were in operation compared with 6 vessels last year due to the continued low catch level of PS.

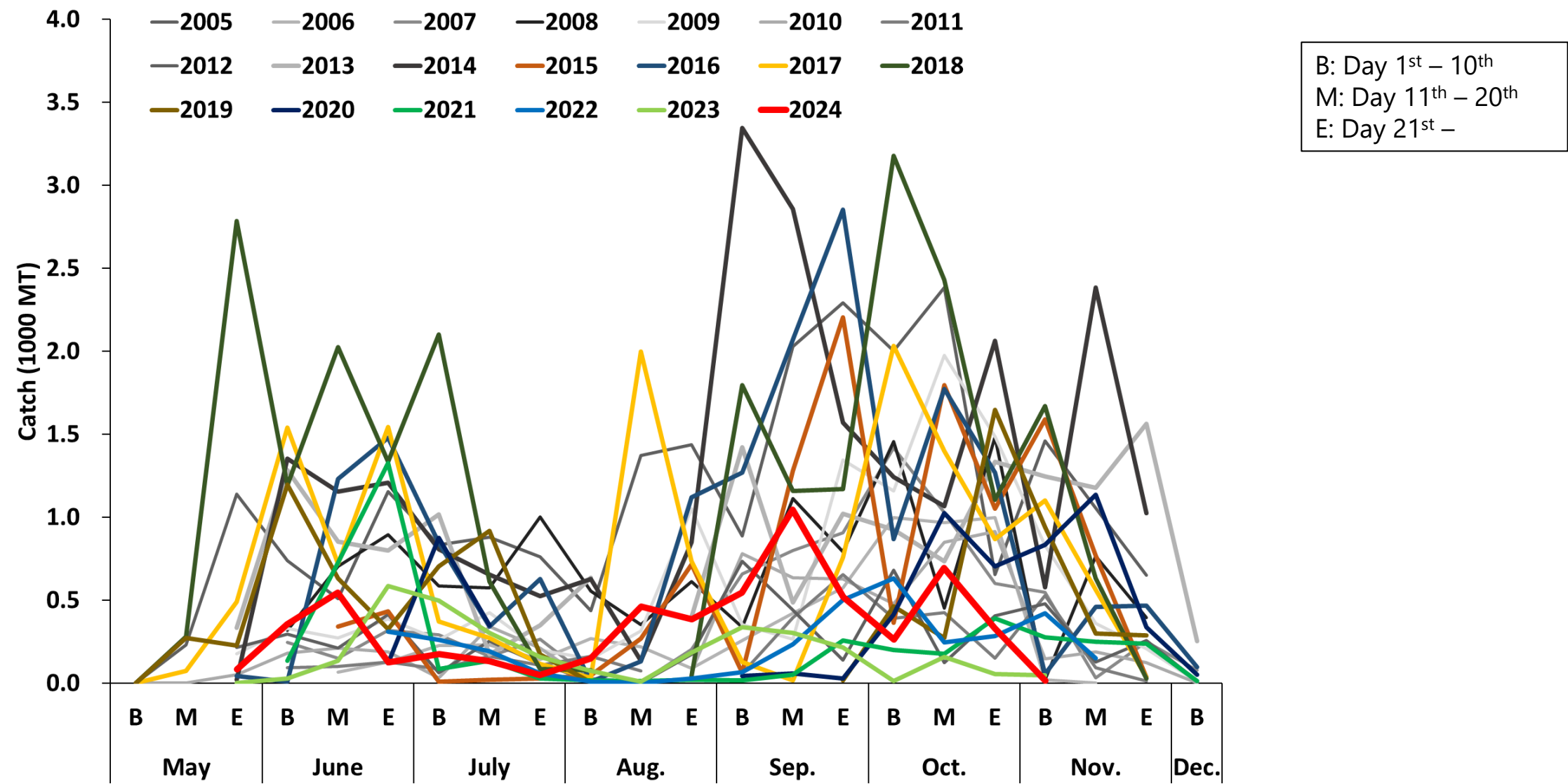


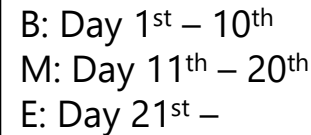


# Relative Accumulated Catch



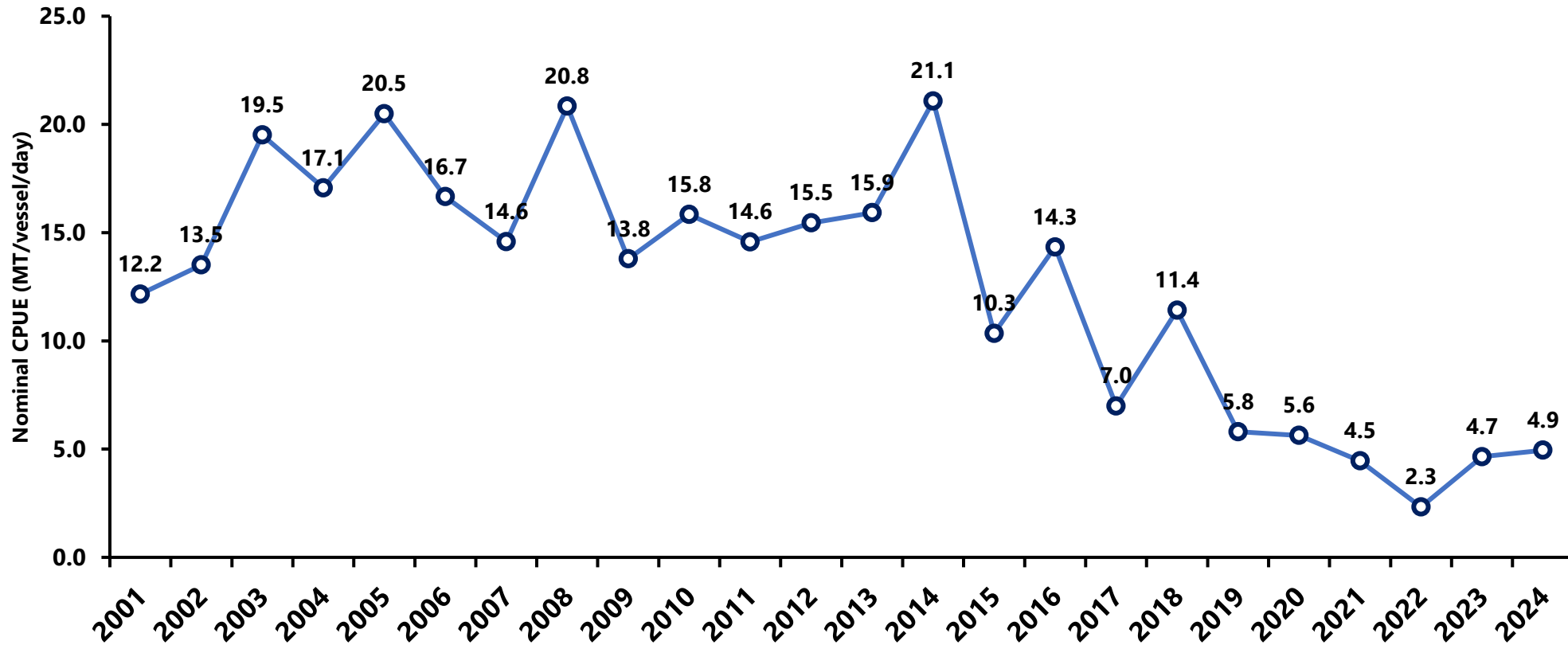
# Seasonal Catch





# Nominal CPUE

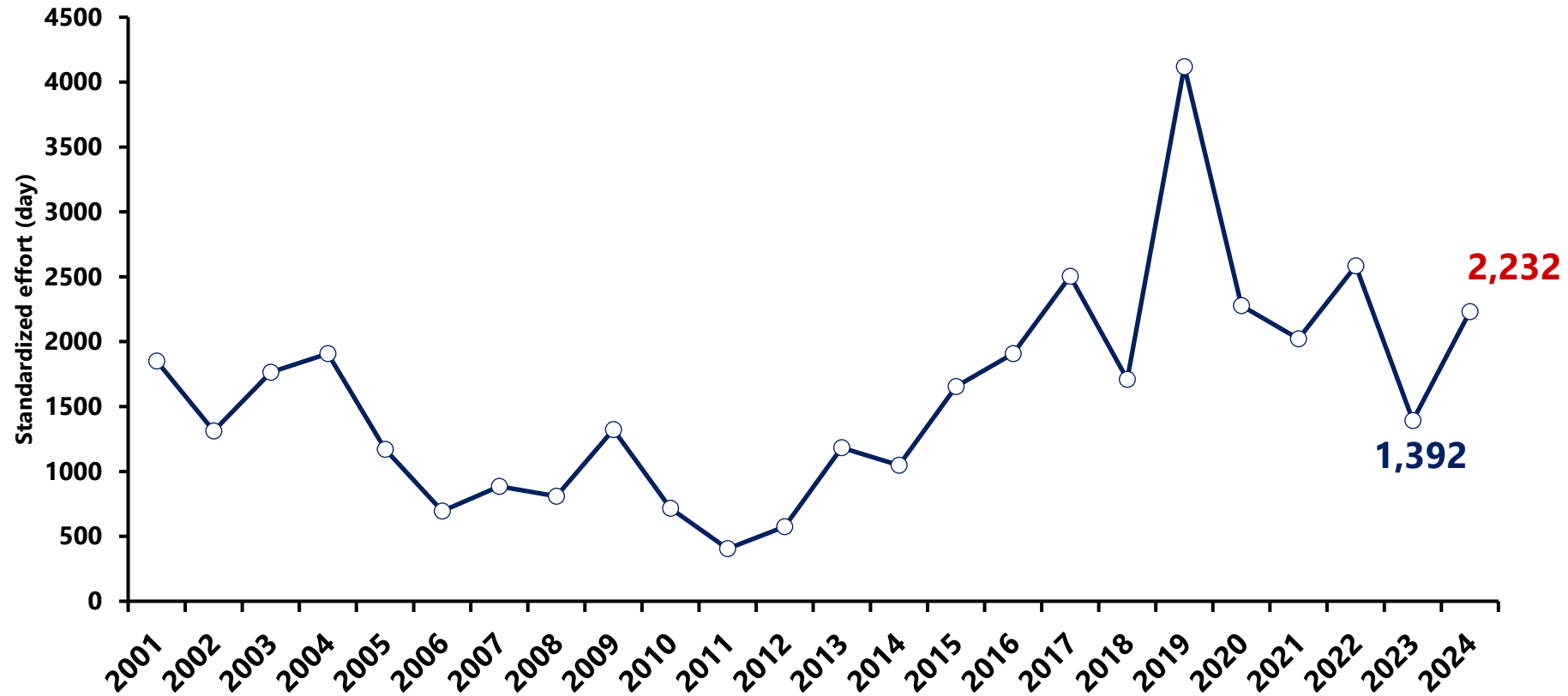
---



- The nominal CPUE is 4.9 in 2024, representing a slight increase compared to the previous year

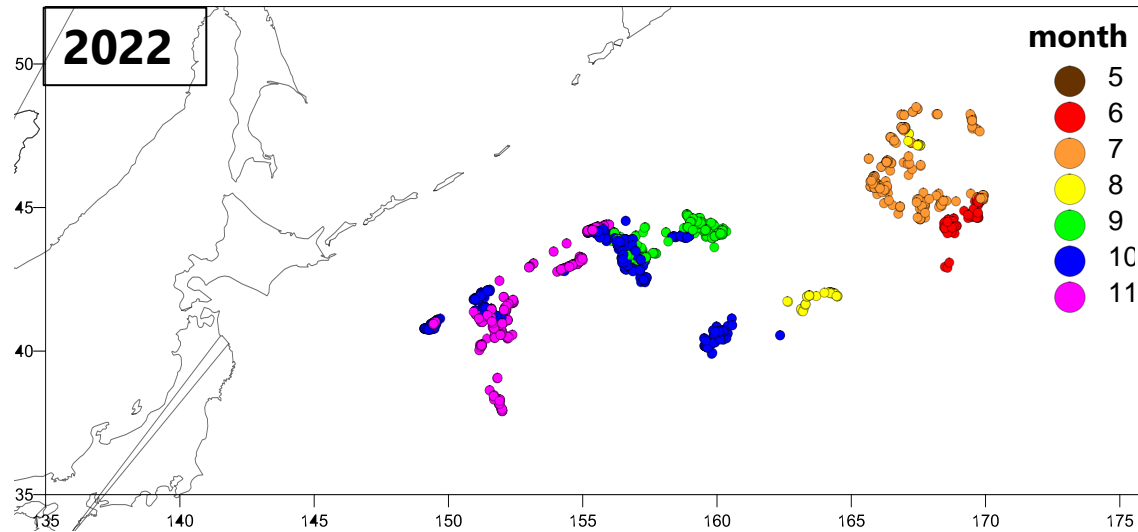
# Standardized Effort(Catch/std CPUE)

---

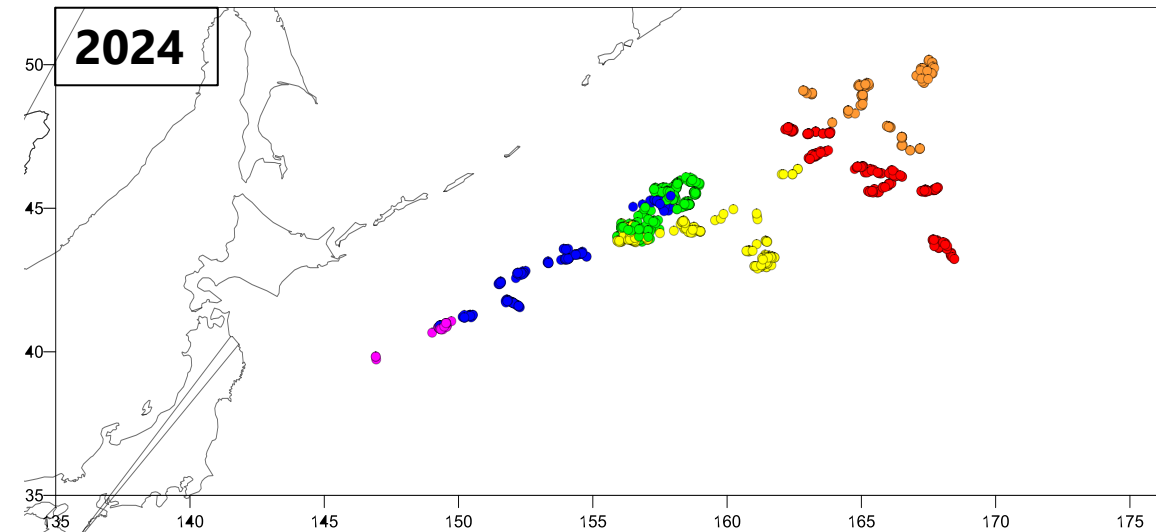
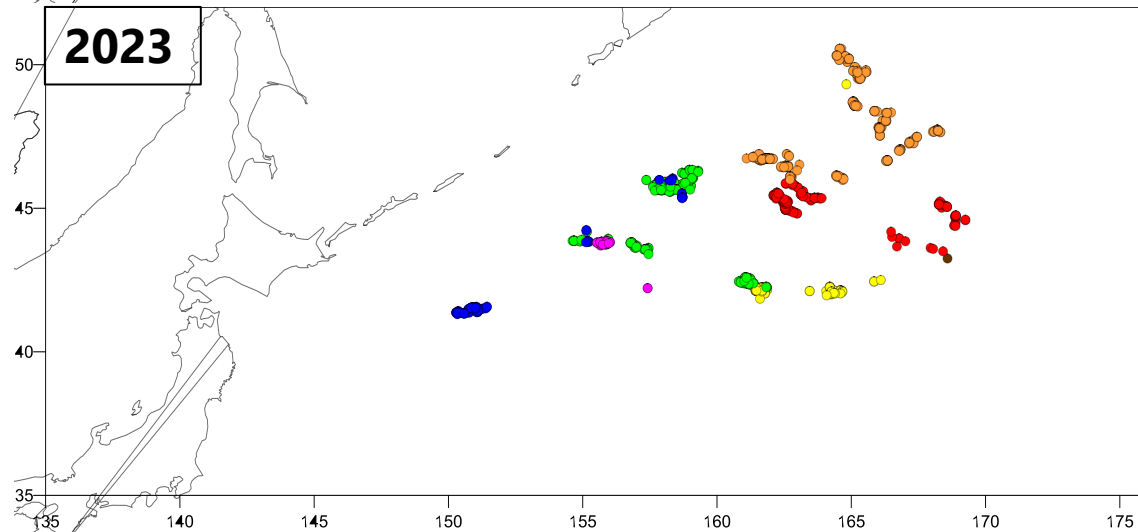


- The standardized effort was 2,232 in 2024, representing a significant increase compared to the previous year.
- The number of fishing vessels decreased from 6 in 2023 to 4 in 2024.

# Fishing Grounds

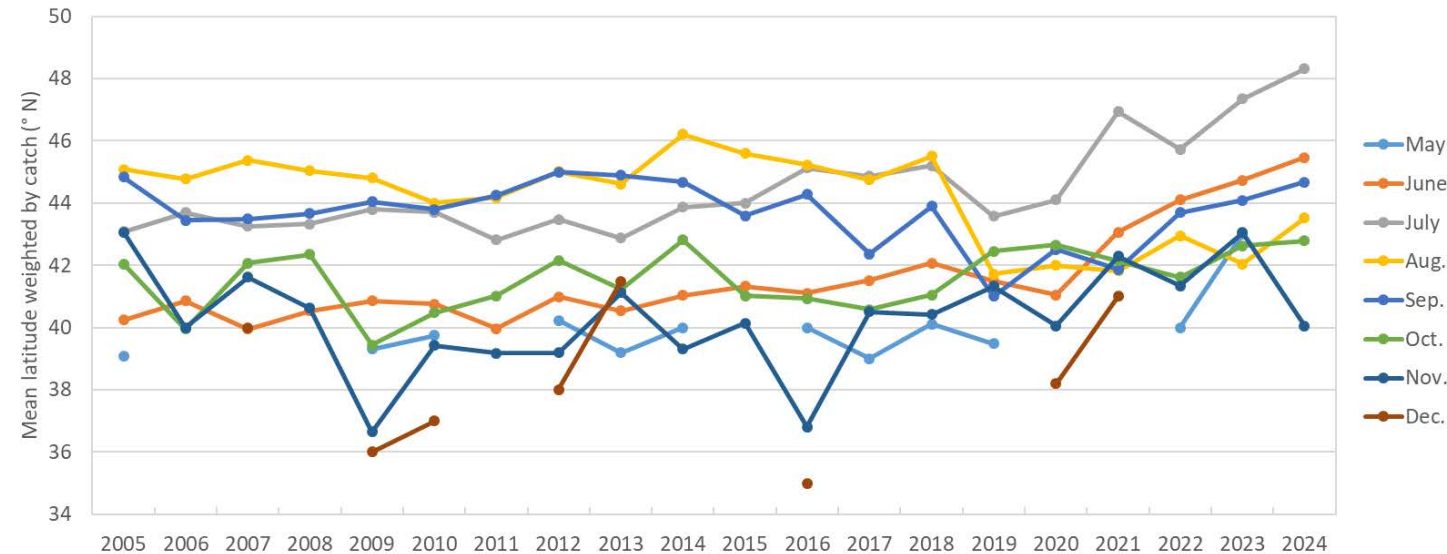


- In 2024, the PS fishing operations took place between 145-170°E longitude.
- The fishing operations in 2023 and 2024 shifted northward compared to 2022.

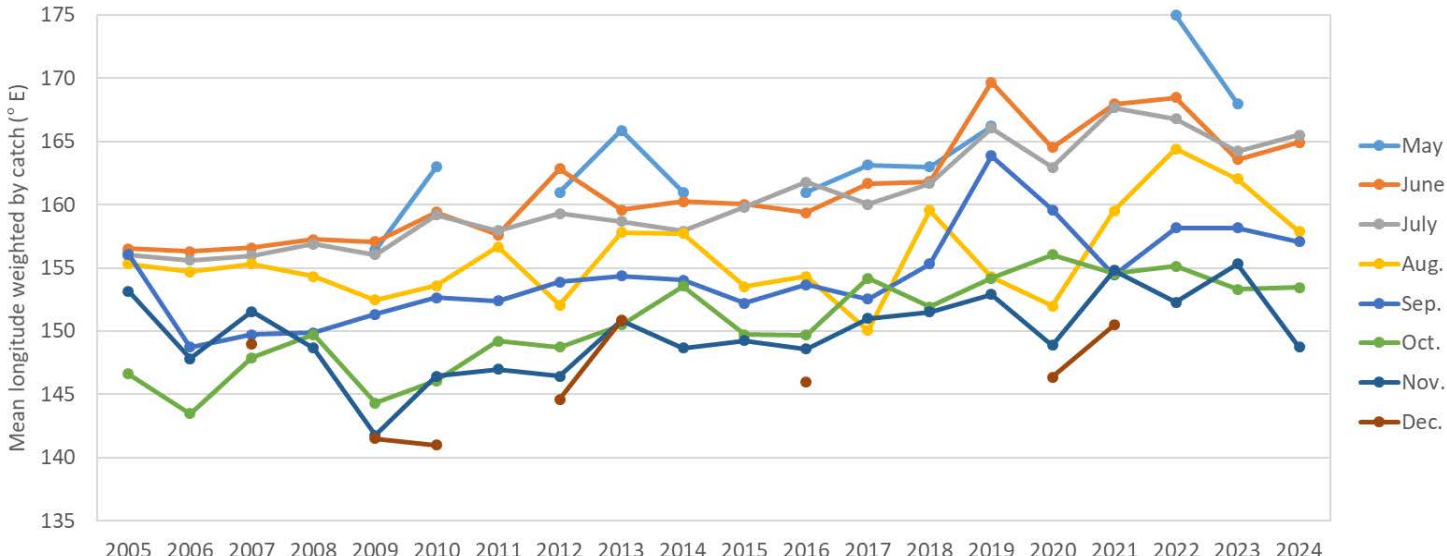


# Annual Change of Fishing Ground

Latitude



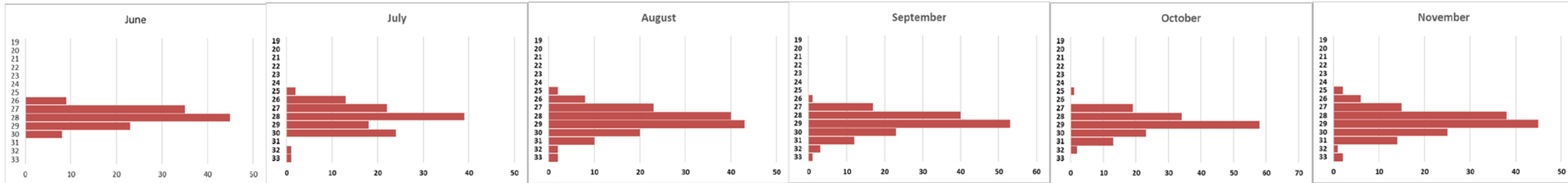
Longitude



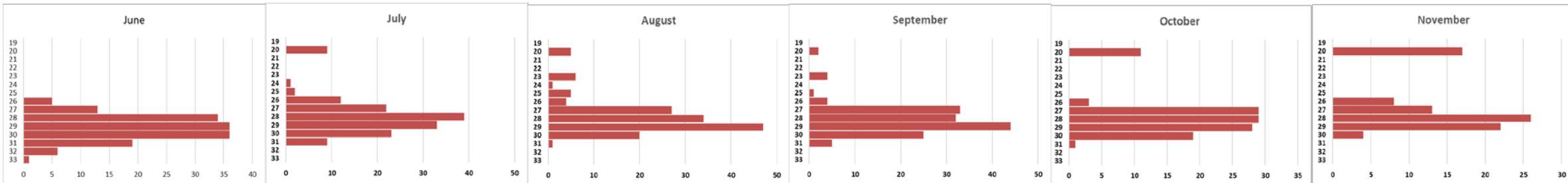
# Seasonal Size Compositions

FL classes (1cm)

2024



2023



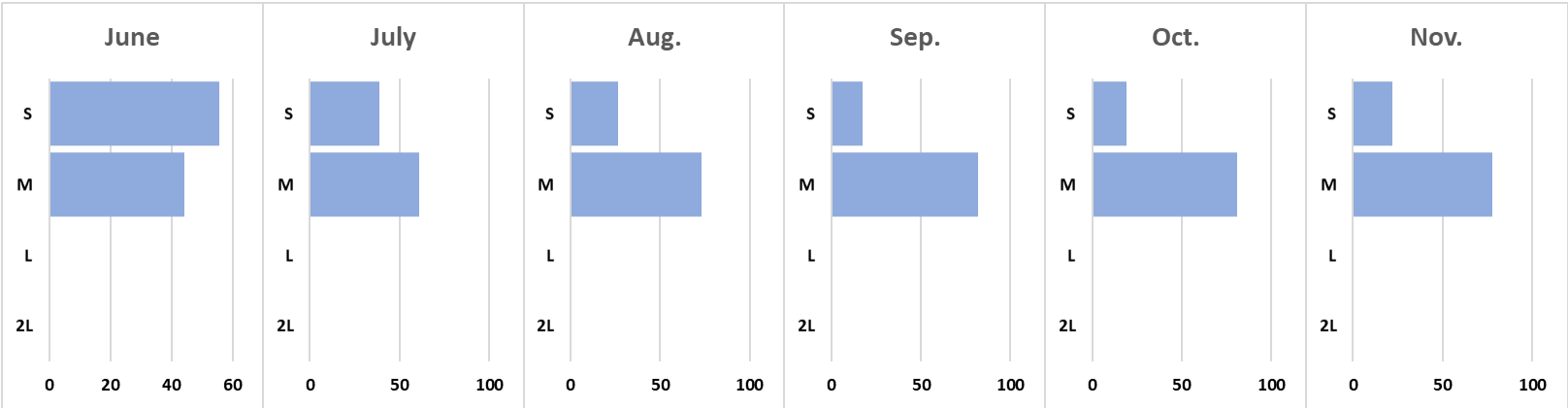
No. of individuals

- In 2024, the FL range was 25-33 cm, with a mean value of 28.4 cm. It was lowest in June (27.7) and highest in September (28.7).
- Although there were no significant seasonal differences in size compositions, it appeared that larger individuals were caught overall compared to the previous year (27.7 cm).

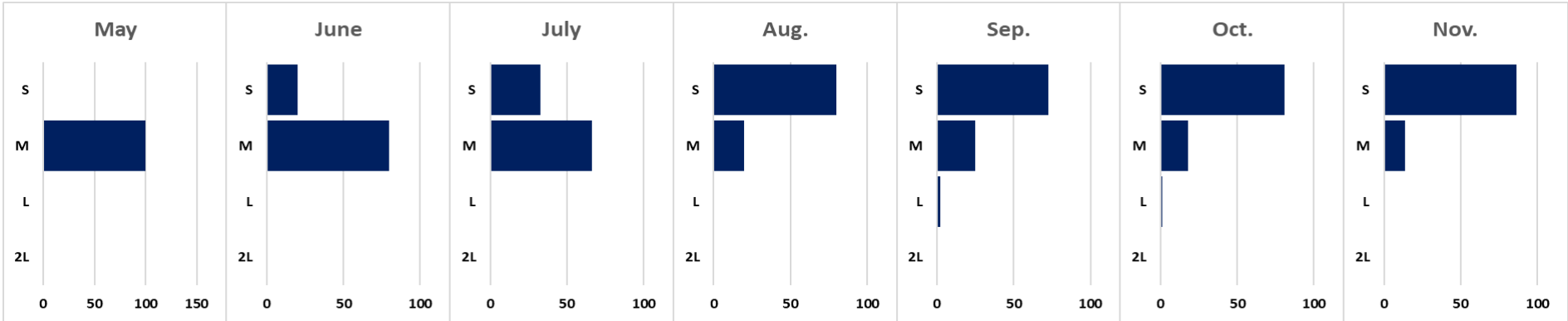


# Size Box Compositions

2024



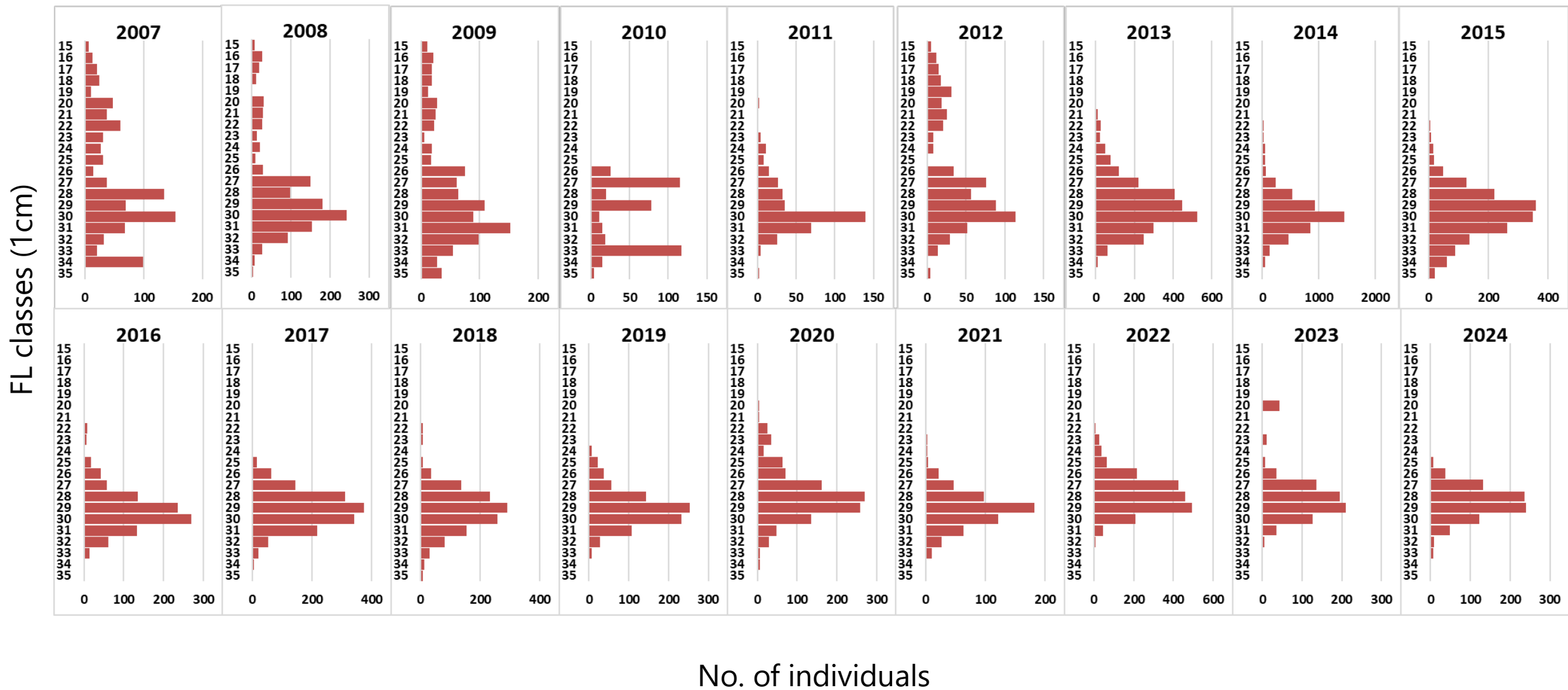
2023



Percentages (%)

- In 2024, the M ratio was dominant during fishing seasons, except in June
- \* S: 18–30cm; M: 23–33cm; L: 27–34cm; 2L: 29–34cm (fork length)

# Annual Change of Body Length Compositions (All fishing season)



# Bycatch species in stick-held dip net

- Analysis of data collected by observers on each vessel in 2021 and 2022.
- The number of bycatch species was 5 in 2021 and 6 in 2022, resulting in a total of 8 species observed over the two years. The bycatch rate of total catch weight was less than 10%.

Period (set)	September 11 - December 6, 2021 (84 sets)			May 29 - September 30, 2022 (176 sets)		
Bycatch species	Butterfish	<i>Hyperoglyphe japonica</i>	27.4 %	Japanese sardine	<i>Sardinopus melanostictus</i>	56.3 %
	Pacific chub mackerel	<i>Scomber japonicus</i>	26.9 %	Pacific chub mackerel	<i>Scomber japonicus</i>	28.0 %
	Neon flying squid	<i>Ommastrephes bartrami</i>	26.7 %	Neon flying squid	<i>Ommastrephes bartrami</i>	7.4 %
	Japanese flying squid	<i>Todarodes pacificus</i>	12.8 %	Chinook(King) salmon	<i>Oncorhynchus tshawytscha</i>	6.0 %
	Japanese sardine	<i>Sardinopus melanostictus</i>	6.2 %	Boreal clubhook squid	<i>Onychoteuthis borealijaponica</i>	1.7 %
				Butterfish	<i>Hyperoglyphe japonica</i>	0.6 %
The bycatch rate of total catch weight	8.5% (19.41 kg)			0.2% (430 kg)		