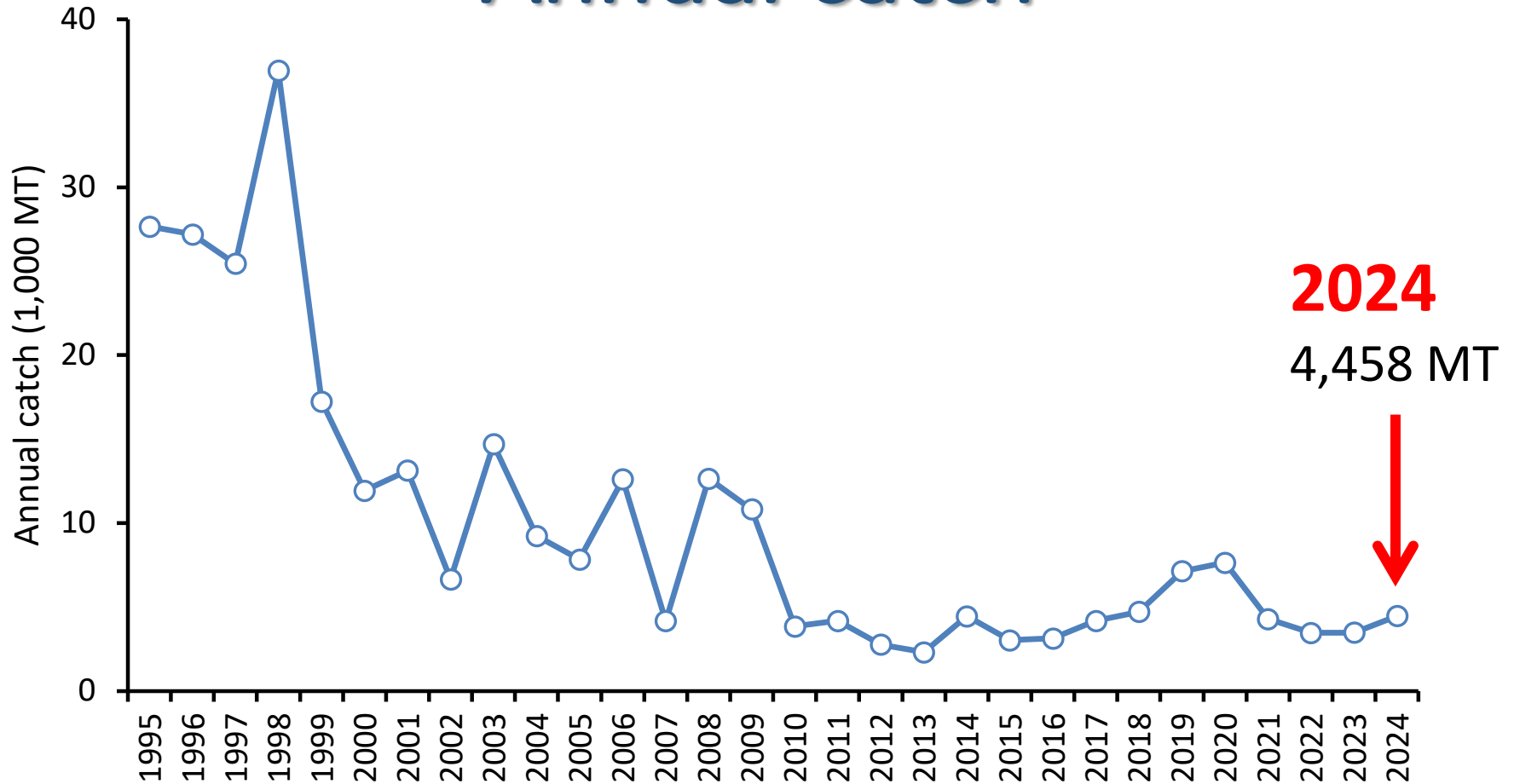


Neon flying squid fishing condition in Japan in 2024



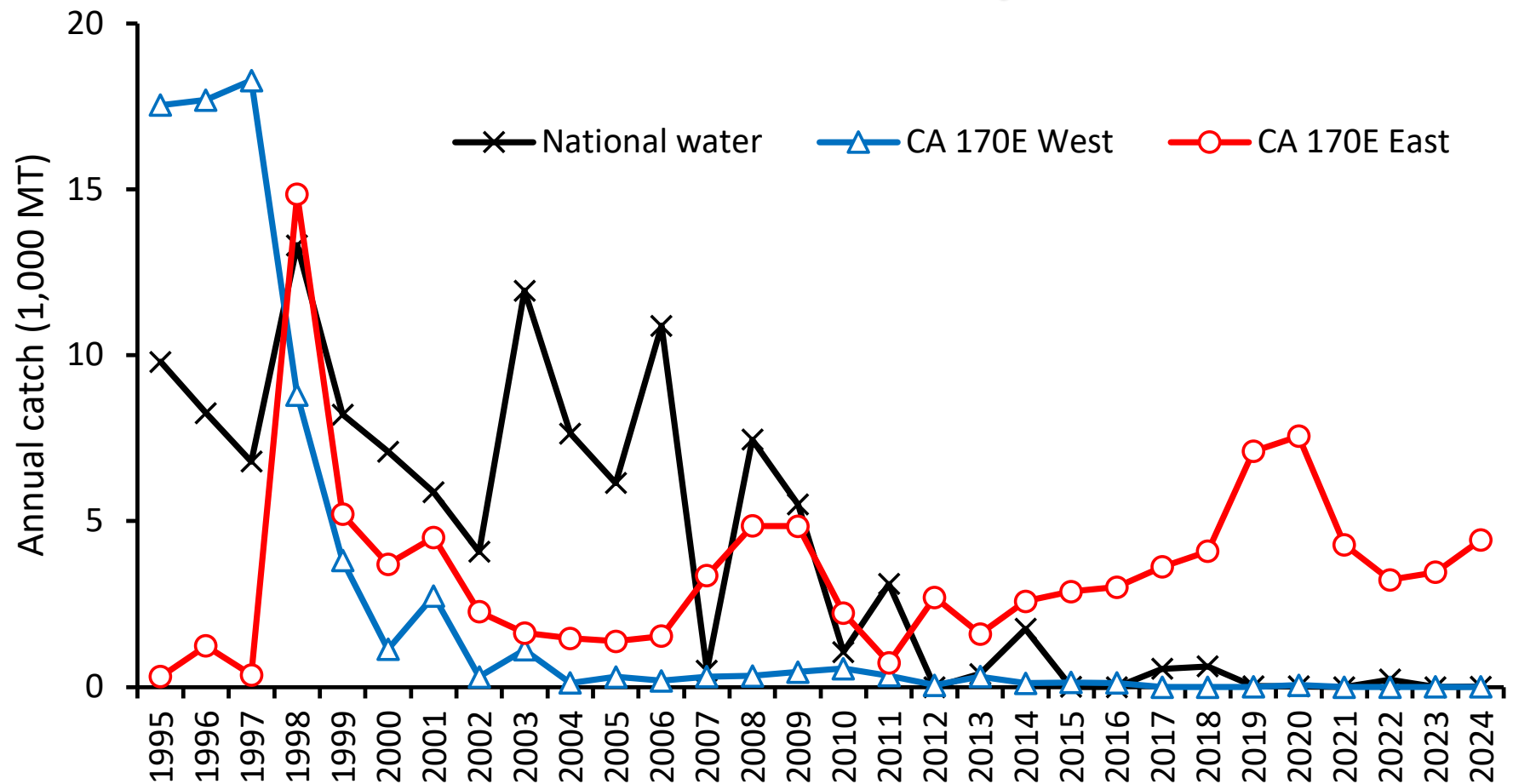
Bungo Nishizawa, Hajime Matsui, Suguru Okamoto, Kazuhiro Oshima
Fisheries Resources Institute, Japan Fisheries Research and Education Agency

Annual catch



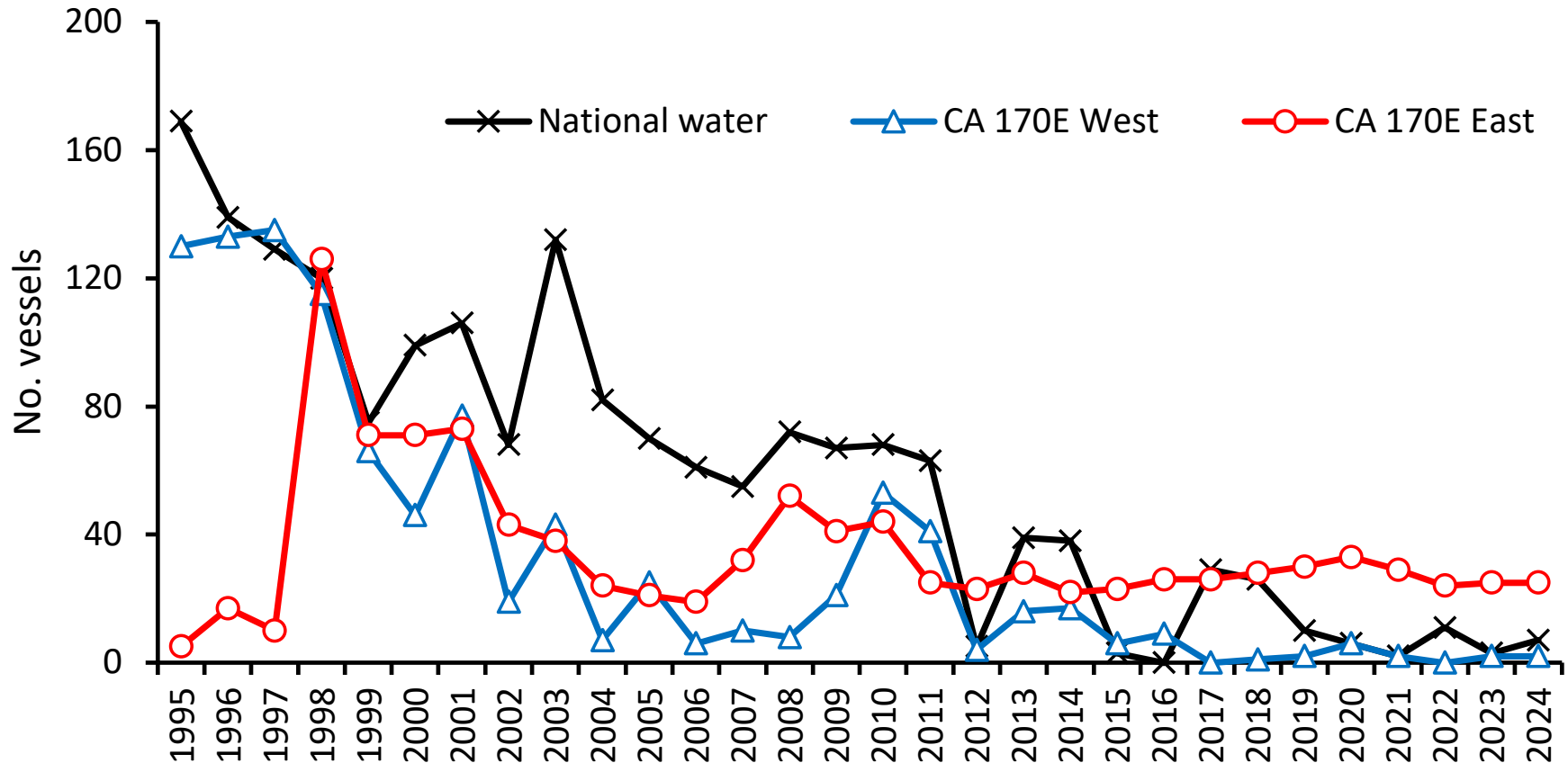
- Squid jigging has become a major neon flying squid fishery after High Seas Driftnet Fishing Moratorium.
- More than 99% of the neon flying squid is caught by squid jigging.
- The annual catch in recent years are relatively stable.
- Total catch in 2024 was 4,458 MT.

Annual catch by area



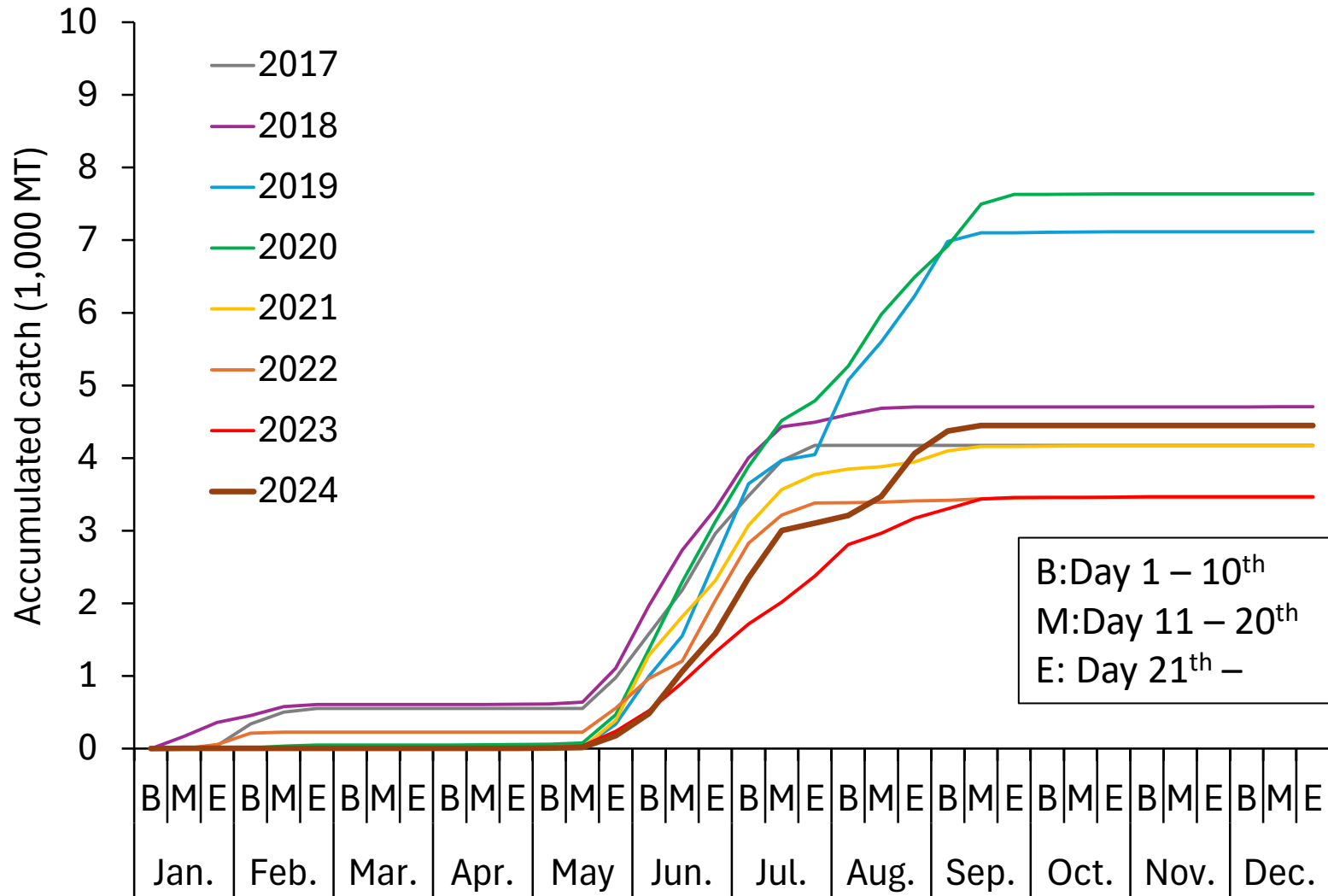
- Most of catch were caught in the CA 170E east in 2024.
- In general, Japanese fishing vessels mainly operate in the CA 170E east from May to July. They also operate in the National water mainly in January and February.

Number of vessels by area



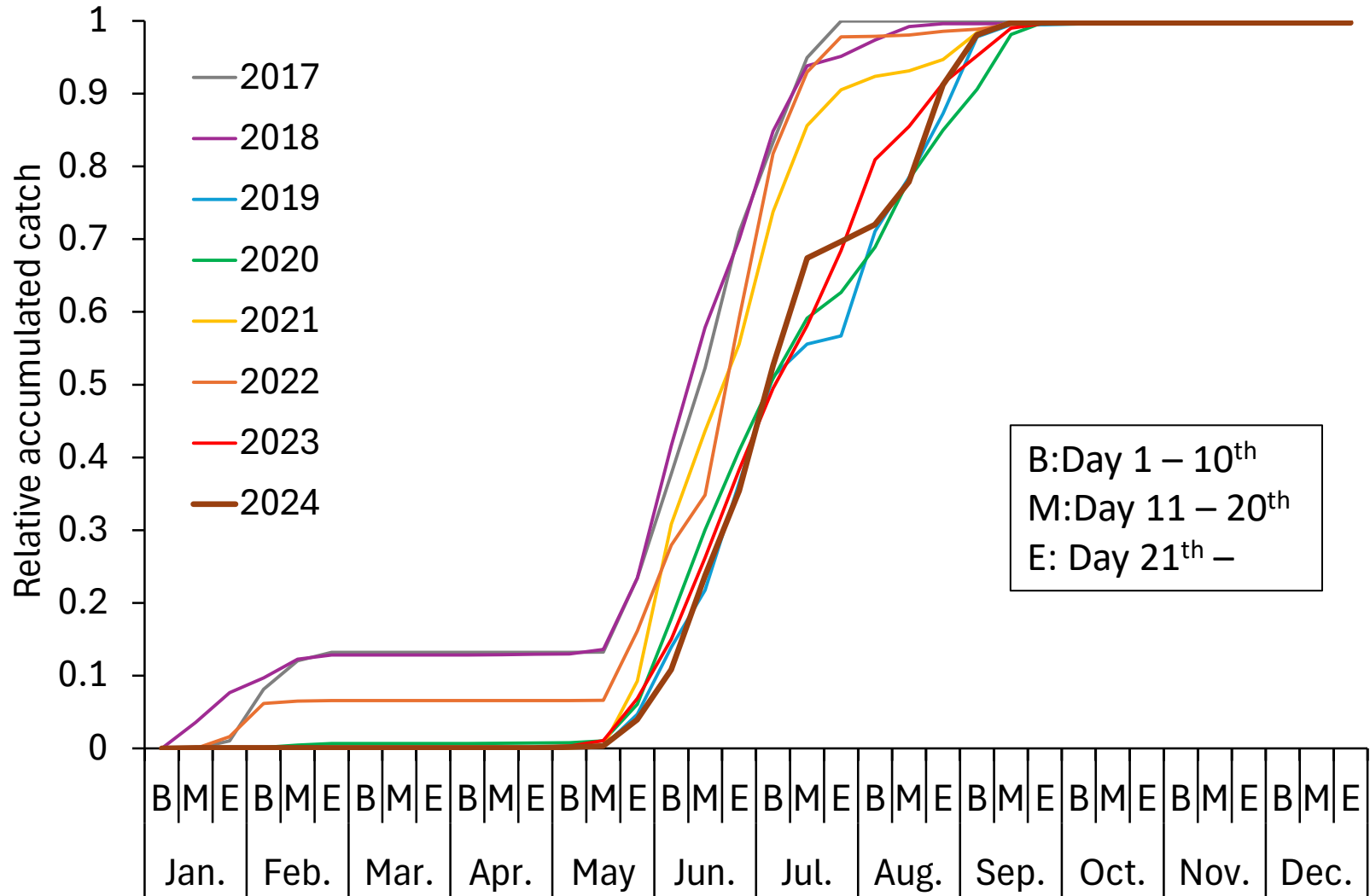
- The number of vessels operating in CA 170E East has been stable since 2011 at around 25 vessels.
- The number of vessels operating in the National water has been decreasing in recent years.

Accumulated catch



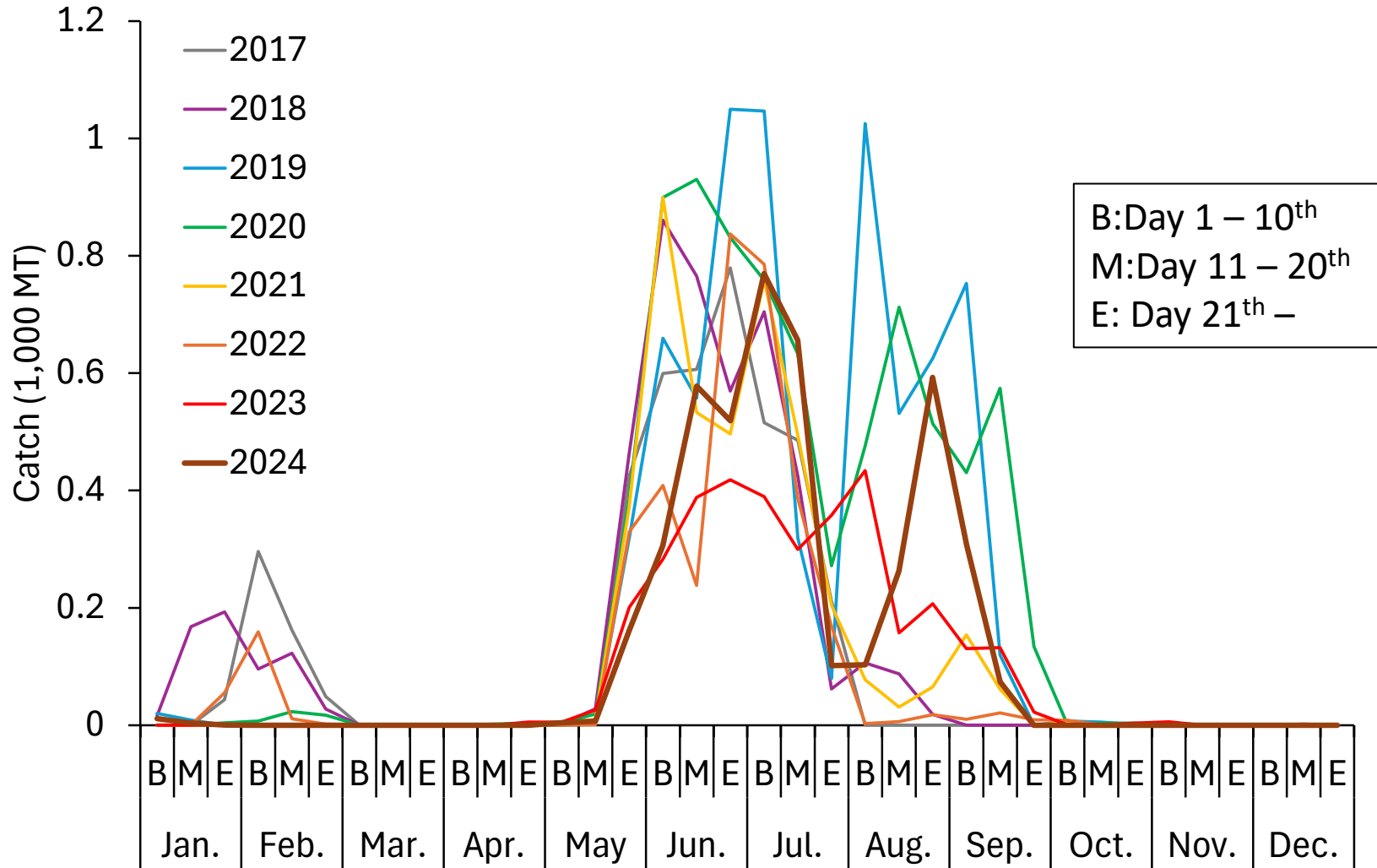
■ The progress of the accumulate catch was similar in 2017, 2018, and 2021

Relative accumulated catch



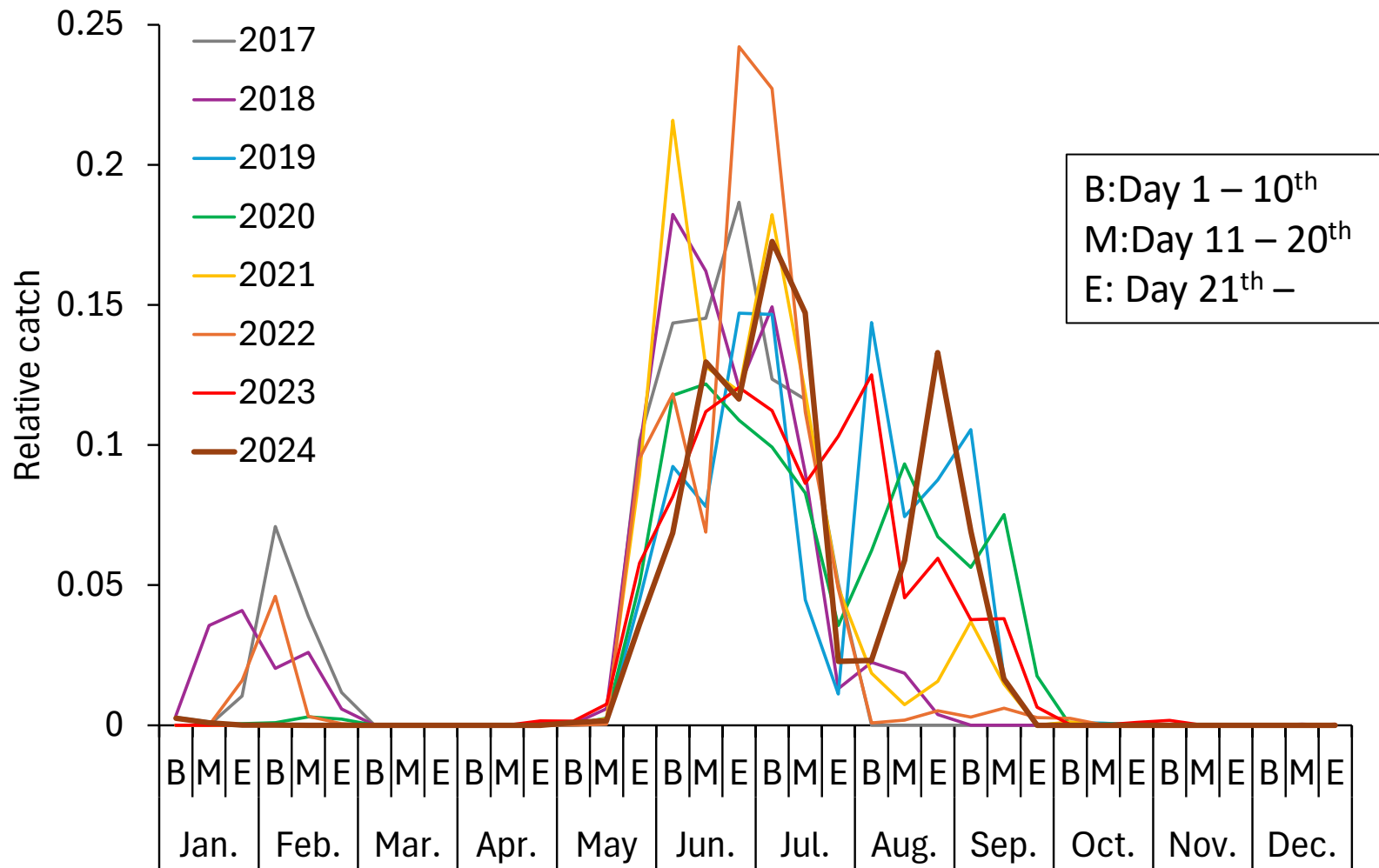
■ The progress of the accumulate catch increased from May to August

Seasonal catch



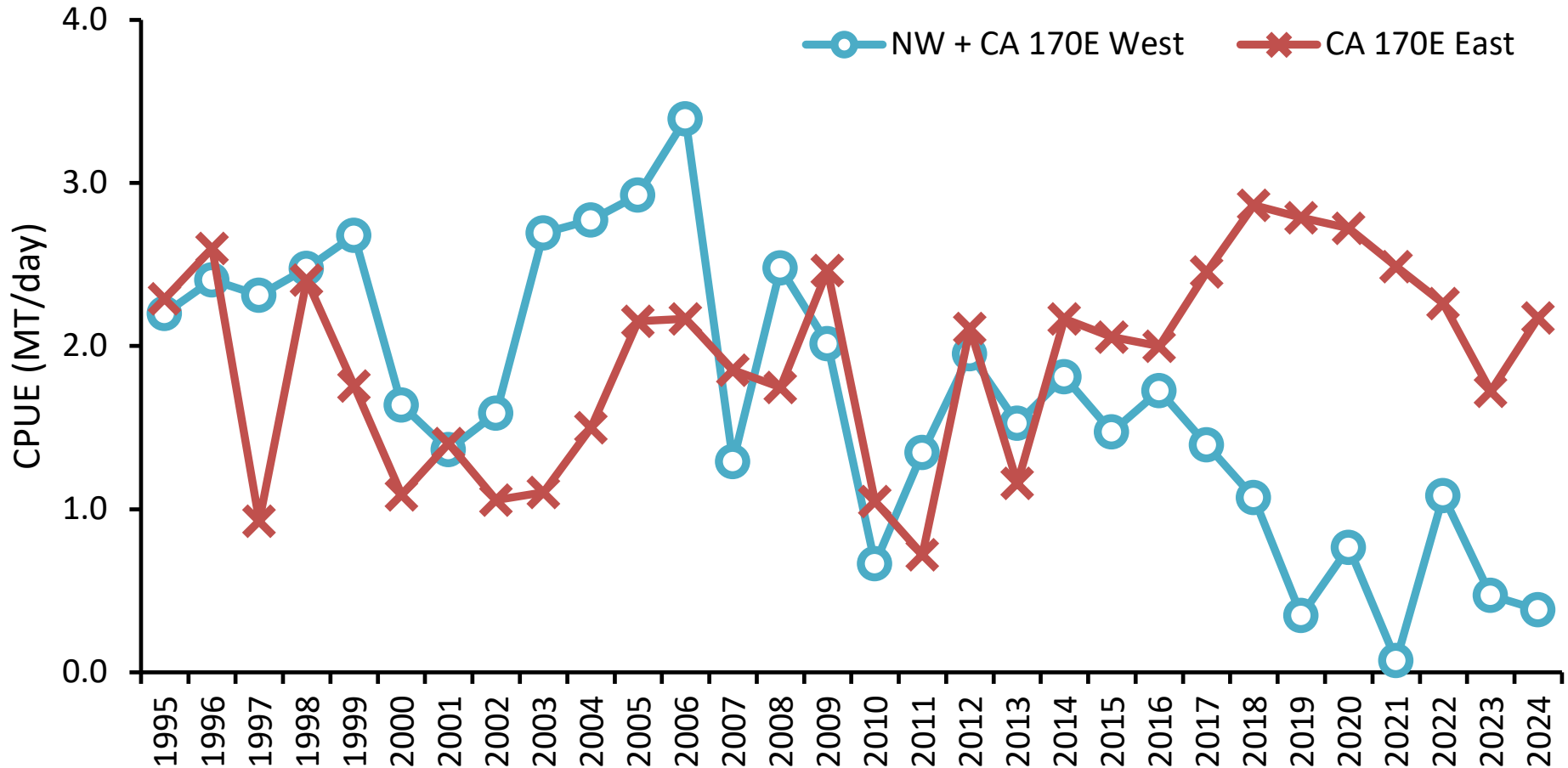
In 2019, 2020 and 2024 many fishing vessels operated in August and September.

Relative seasonal catch



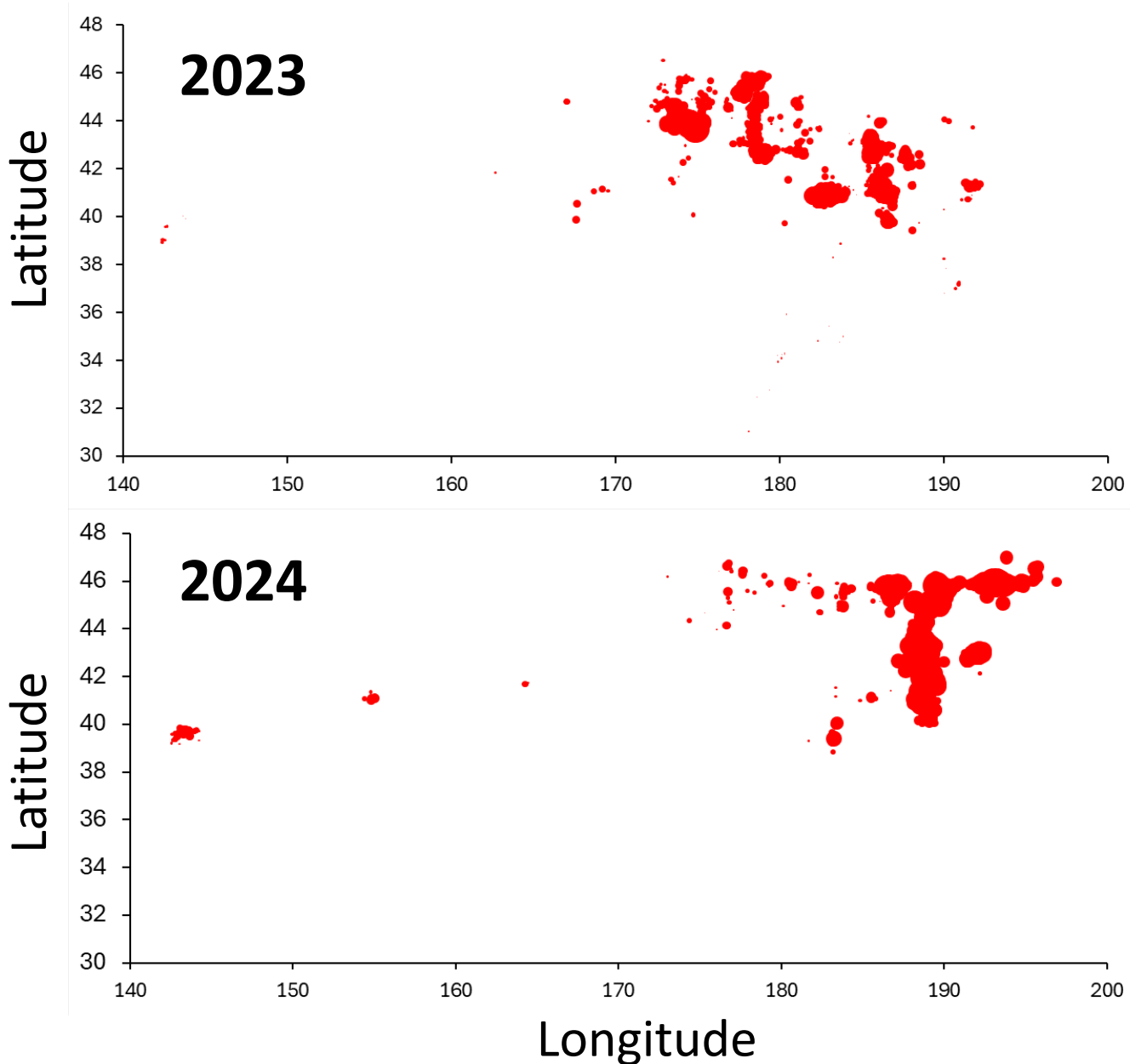
In 2023 and 2024 there was almost no catch between Jan. and Feb. because fishing vessels operated targeting Japanese flying squid

Nominal CPUE



■ Nominal CPUE in the CA 170E west and the National water was **0.4**, and in the CA 170E east was **2.2** in 2024.

Spatial nominal CPUE



Summary

Neon flying squid fishing condition in Japan in 2024

- Total catch in 2024 was **4,458** MT.
- Most of catch were caught in the CA 170E.
- There was almost no catch in the National water because fishing vessels operated targeting Japanese flying squid in January and February.
- Nominal CPUE in the CA 170E west and the National water was **0.4**, and in the CA 170E east was **2.2**.