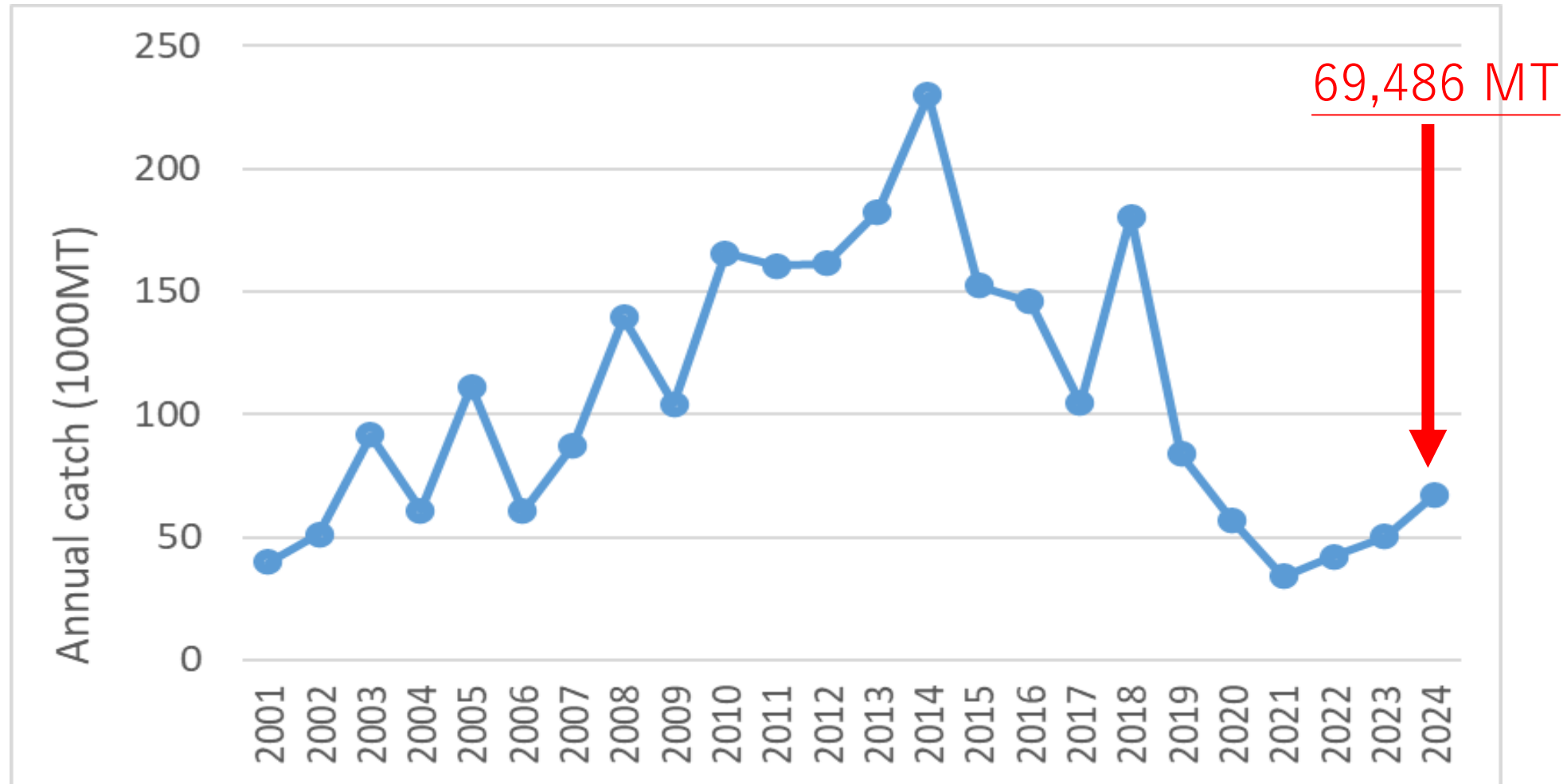


Fishery status for Pacific saury

Report of Chinese Taipei

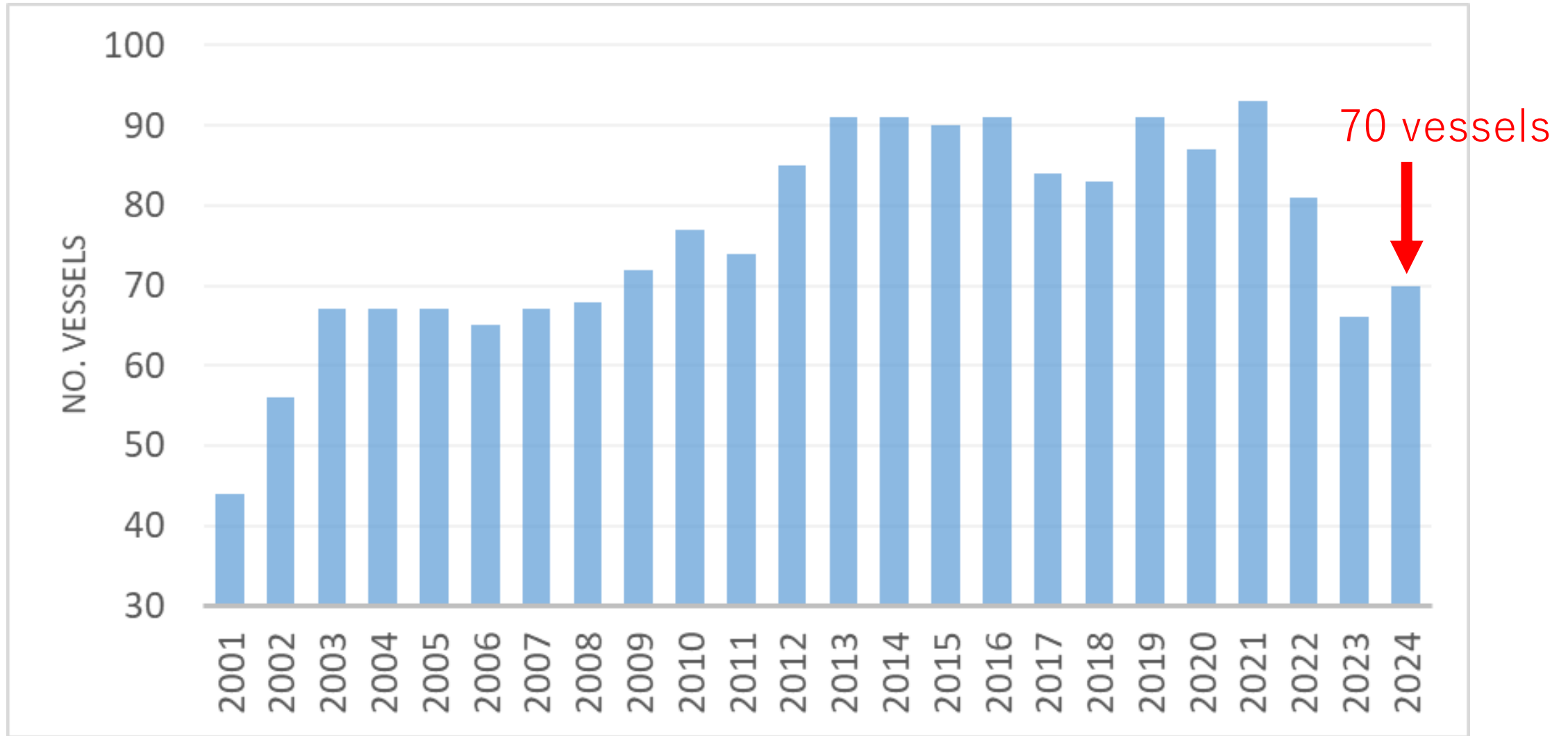


Annual catch series



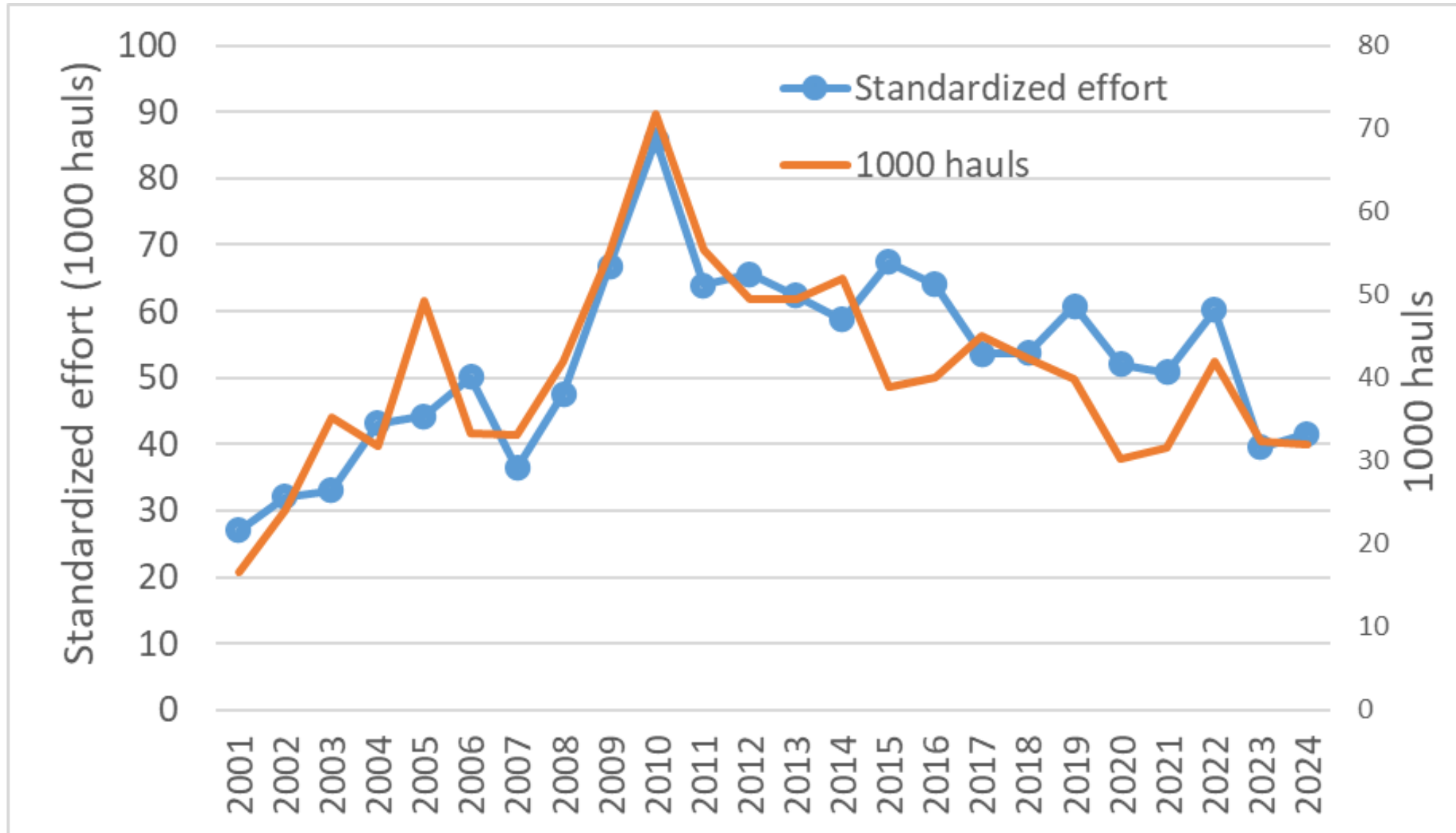
- The historical catch reached the highest in 2014.
- In 2018, the saury catch were around 180,000 tons. Since then, the catch has been decreasing every year until 2021.

Number of vessels



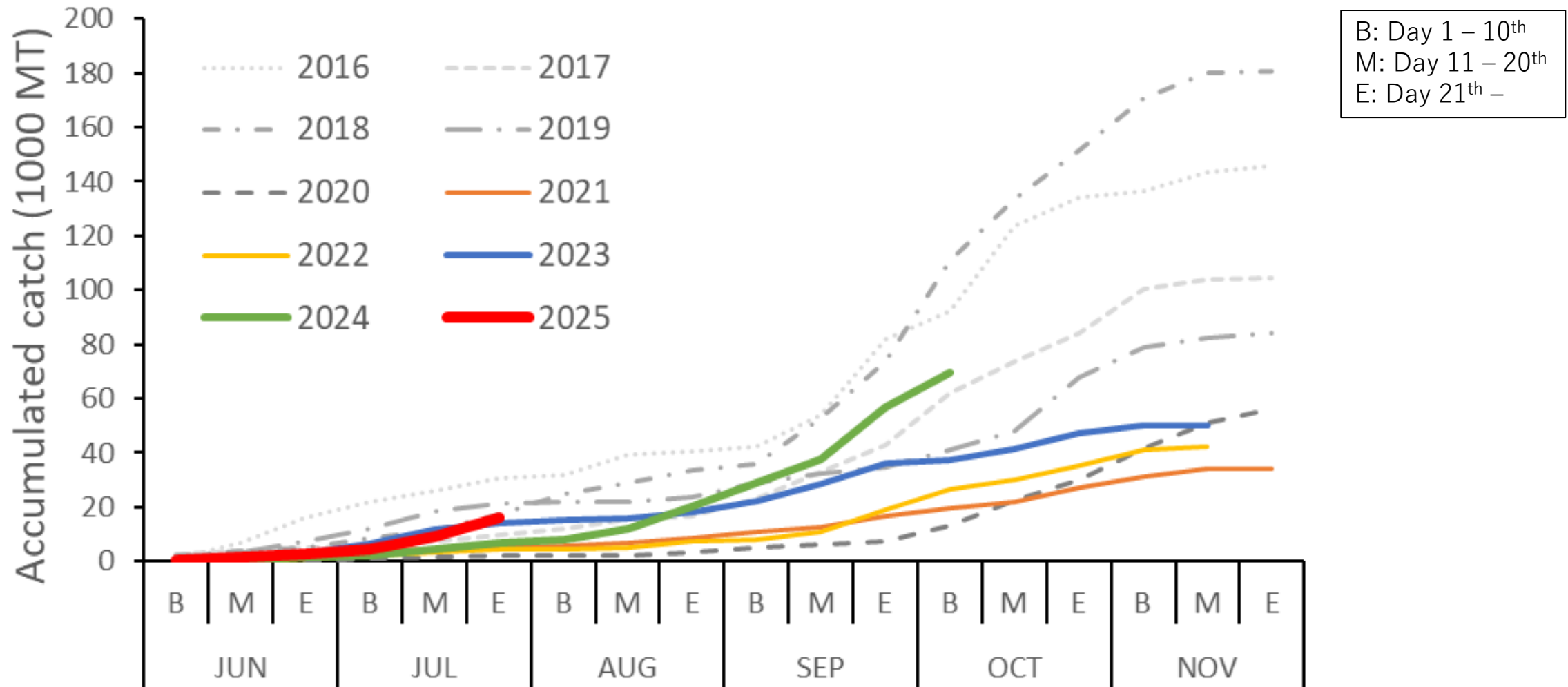
- 93 vessels conducted fishing activities in 2021, and in 2023, the number decreased to 66.

Standardized effort (Catch/stdCPUE)



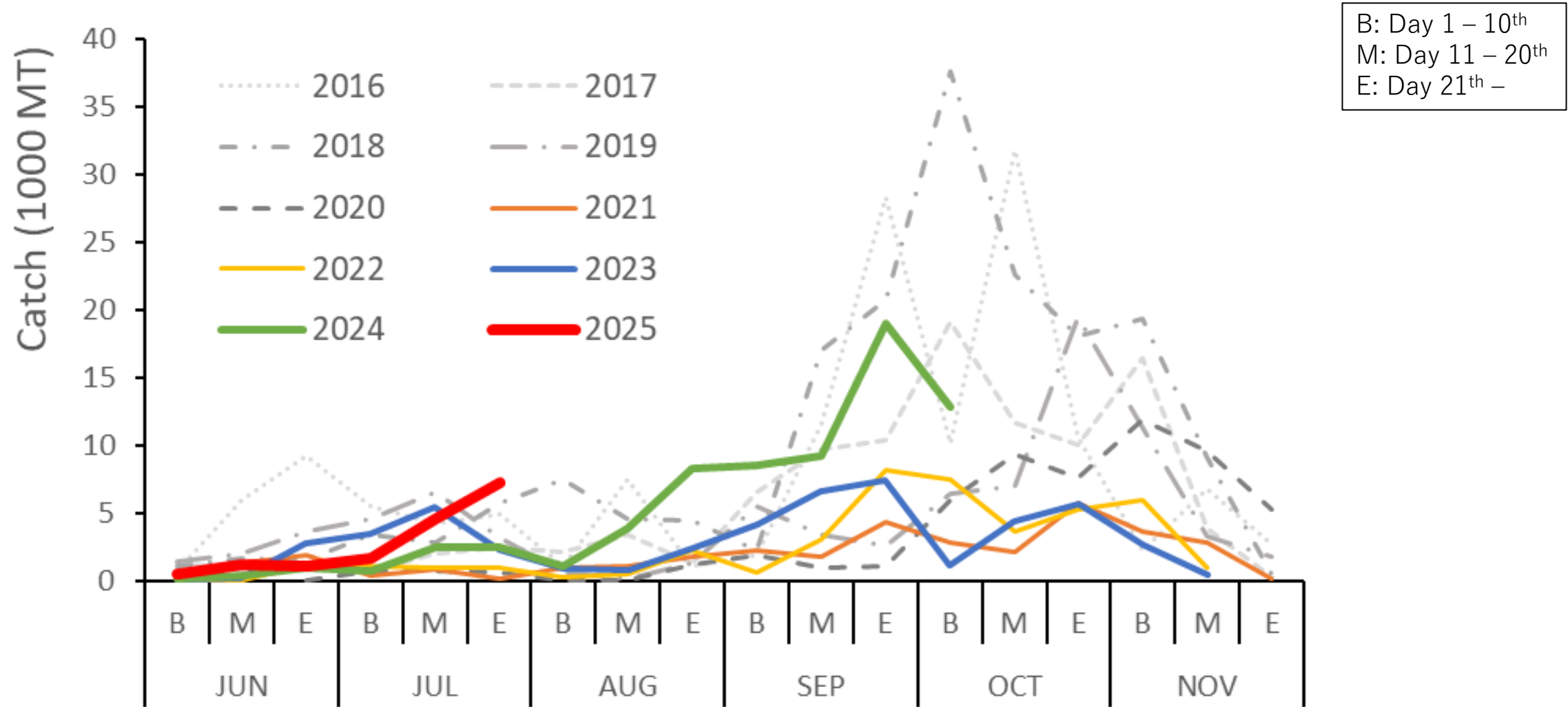
- Standardized effort was 41,608 in 2024.

Accumulated catch

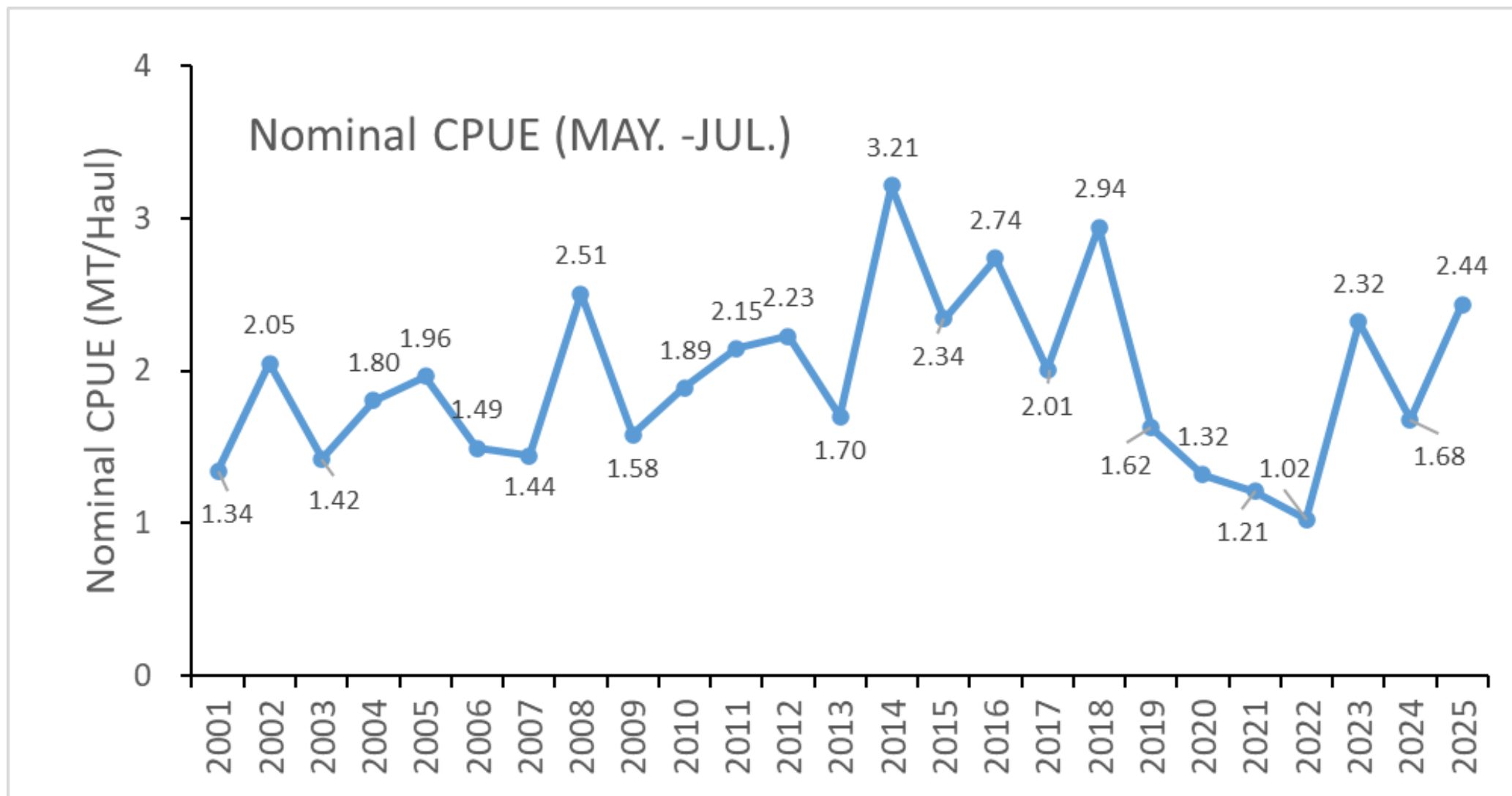


- Accumulated catch by the end of July was 16,015 tons, which was more than that of the same period last year (7,030 tons).

Seasonal catch

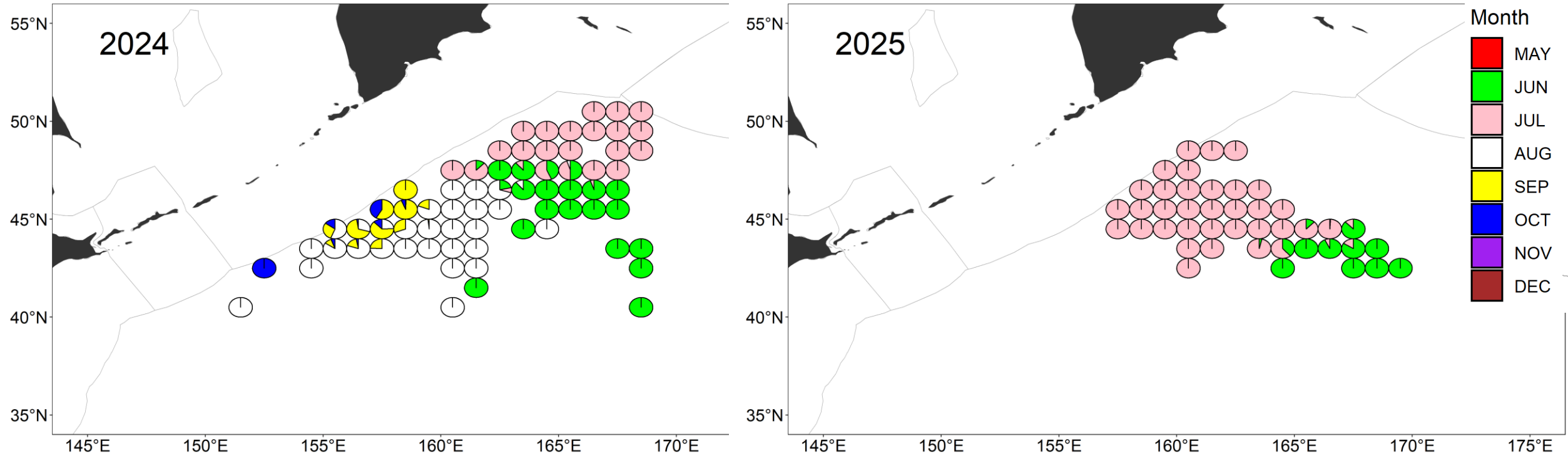


- The catch was more than last year.



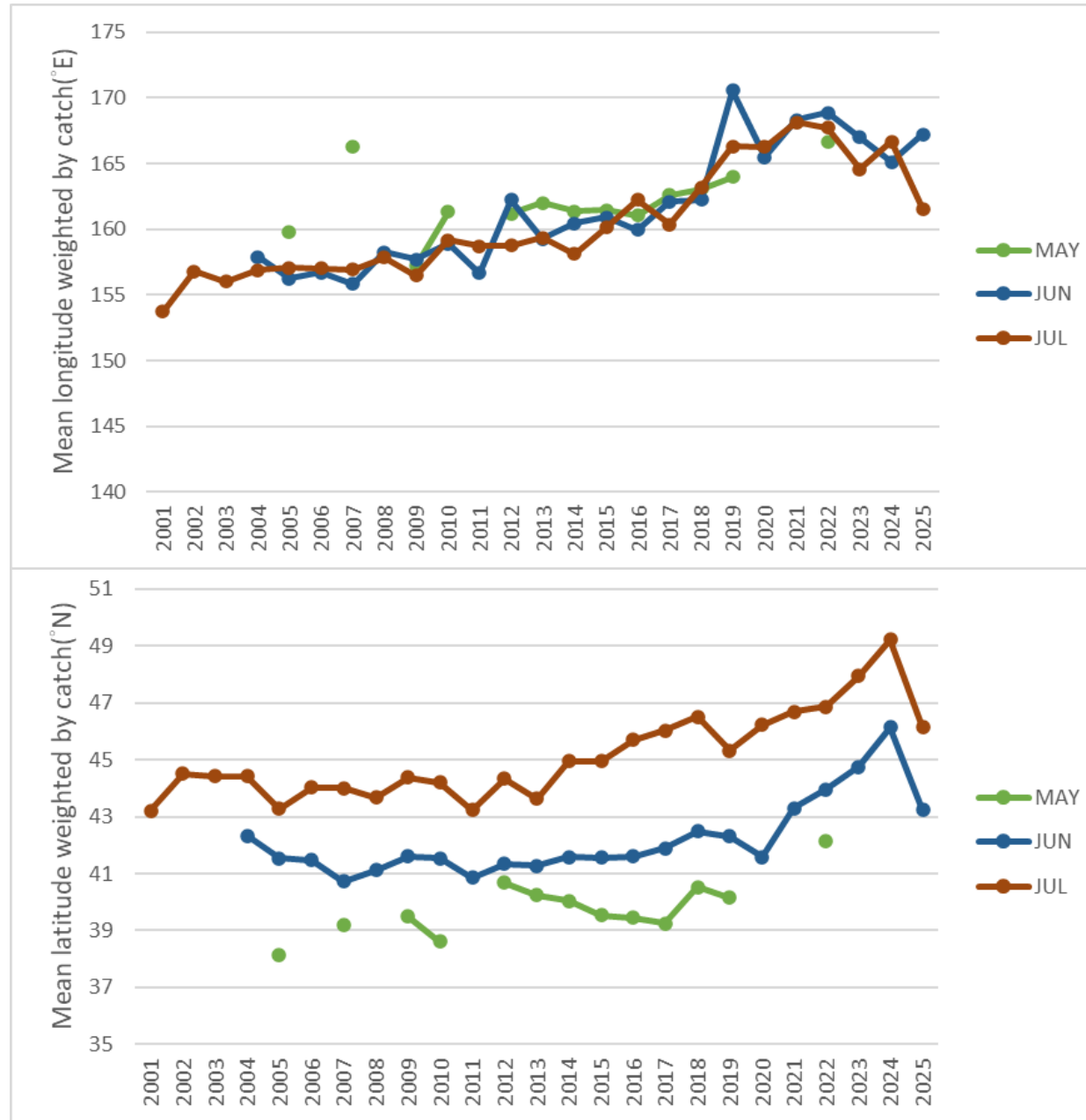
- The nominal CPUE is 2.44 MT / haul, which is more than that of the same period last year.

Fishing ground



- Compared with the fishing activities distribution of 2024, it was observed that the fishing grounds distributed between 42°N and 49°N in 2025.

Annual change of fishing ground



Size box compositions

Specification definition :

S : less than 6 pcs/kg

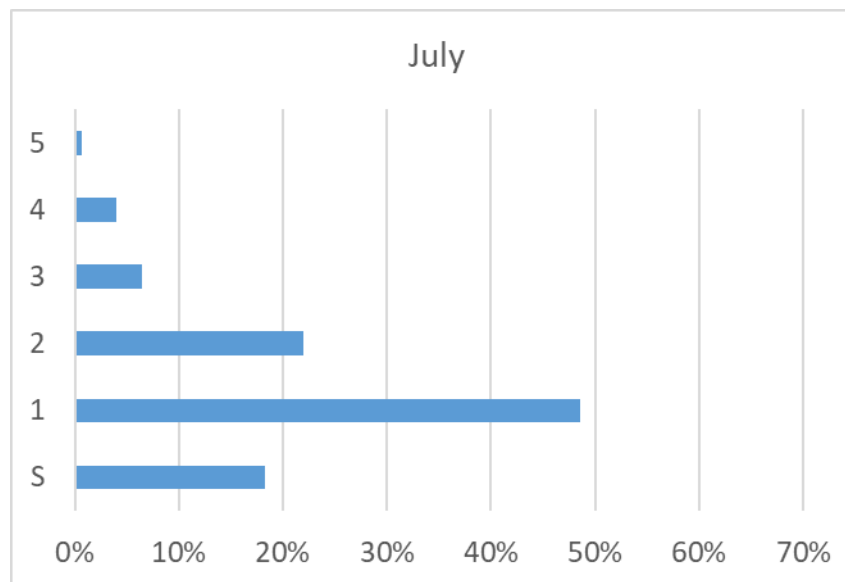
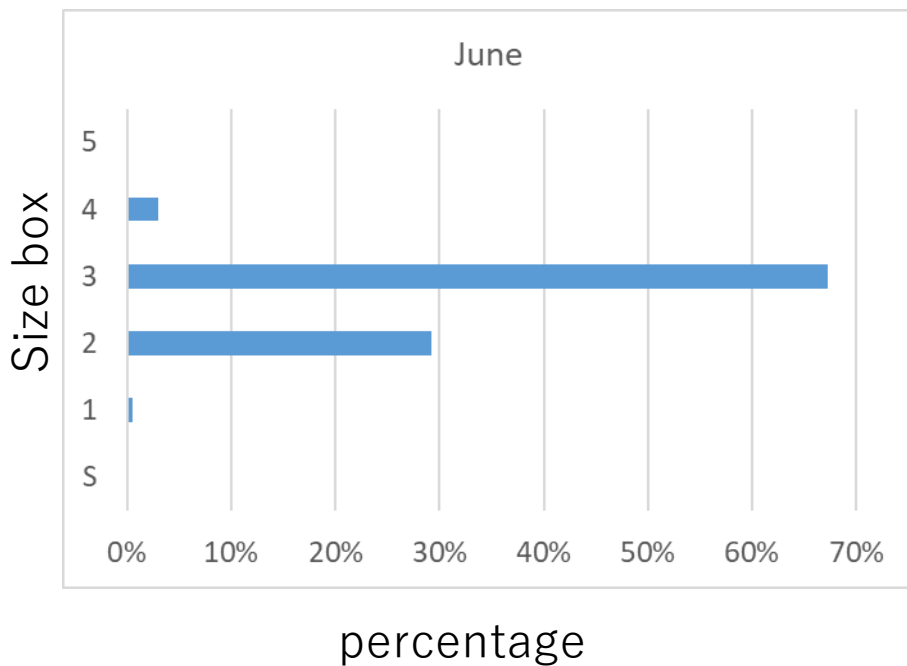
1 : 7~9 pcs/kg

2 : 10~12 pcs/kg

3 : 13~15 pcs/kg

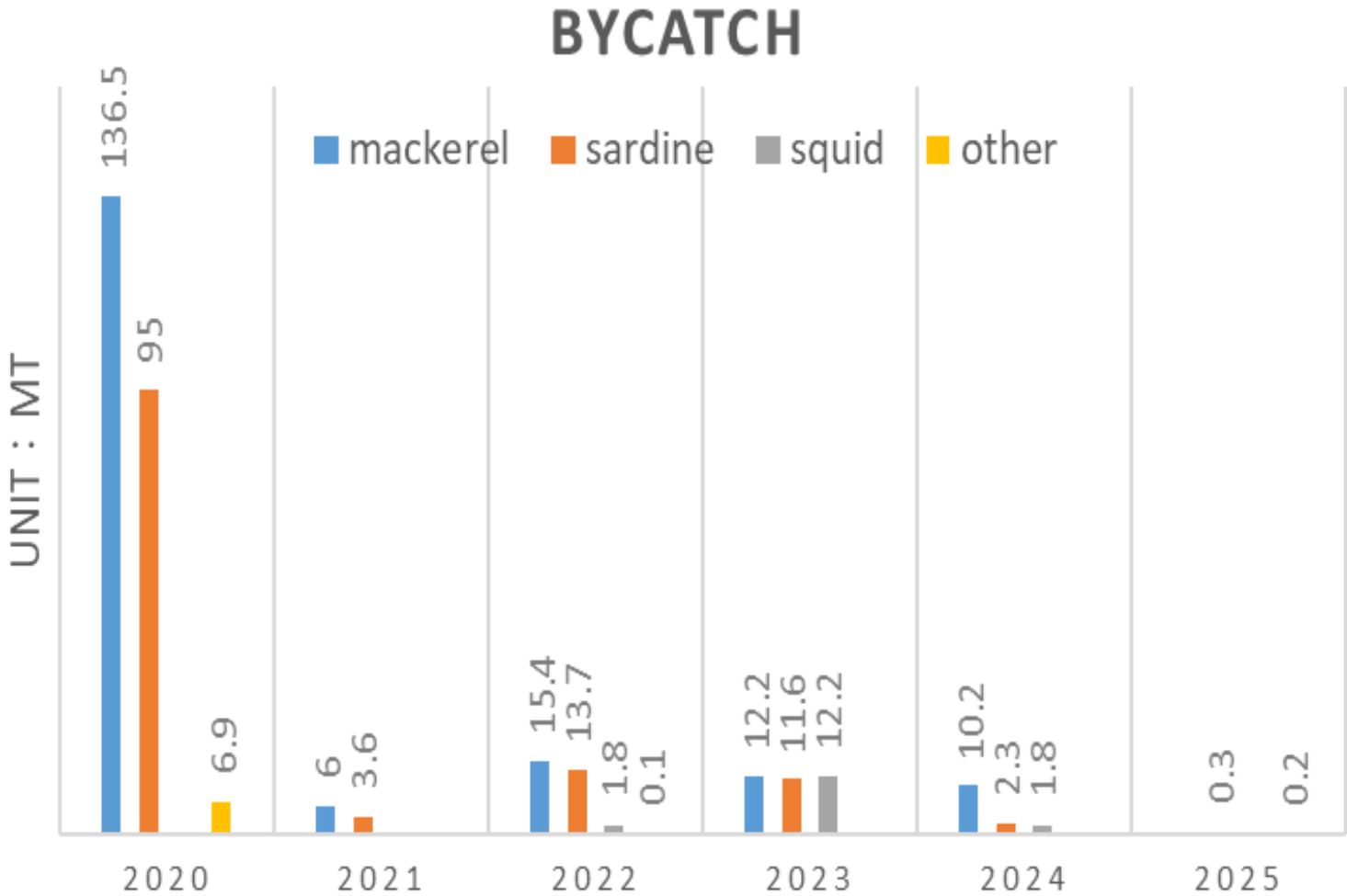
4 : 16~18 pcs/kg

5 : more than 19 pcs/kg



year/species	2025 Bycatch(MT)
mackerel	
sardine	0.3
squid	
other	0.2
Total	0.5

Other : epipelagic fish,
e.g. *Sardinella zunasi*



- By the end of July, bycatch accounted for 0.003% of the total catch.

Summary

- Accumulated catch by the ended of July was 16,015 tons, which was more than that of the same period last year (7,030 tons).
- The nominal CPUE during the period of June to July is about 2.44 MT /haul in 2025 (1.68 MT /haul in 2024, 2.32 MT /haul in 2023).

Thank you for your attention!