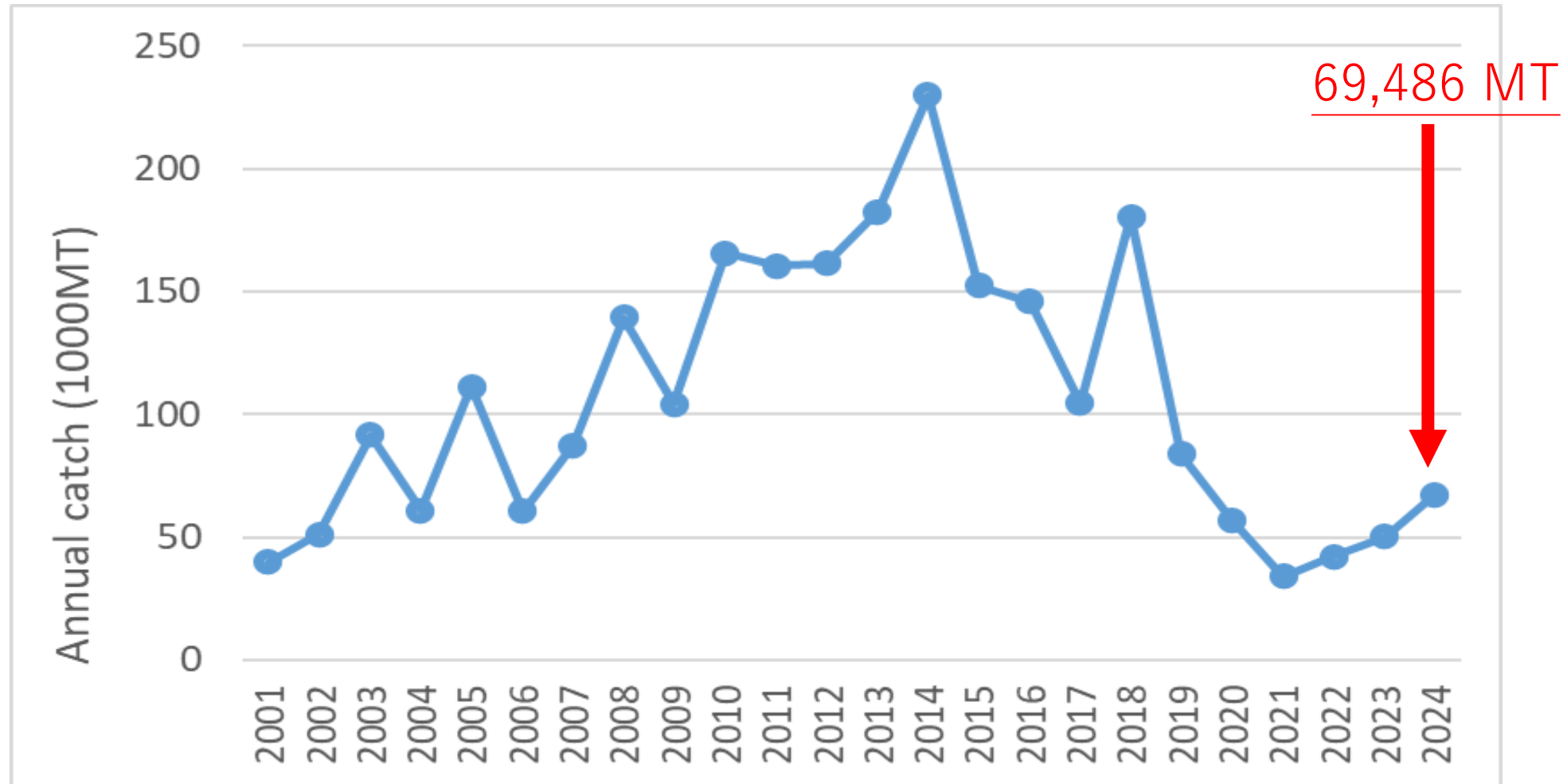


Fishery status for Pacific saury

Report of Chinese Taipei

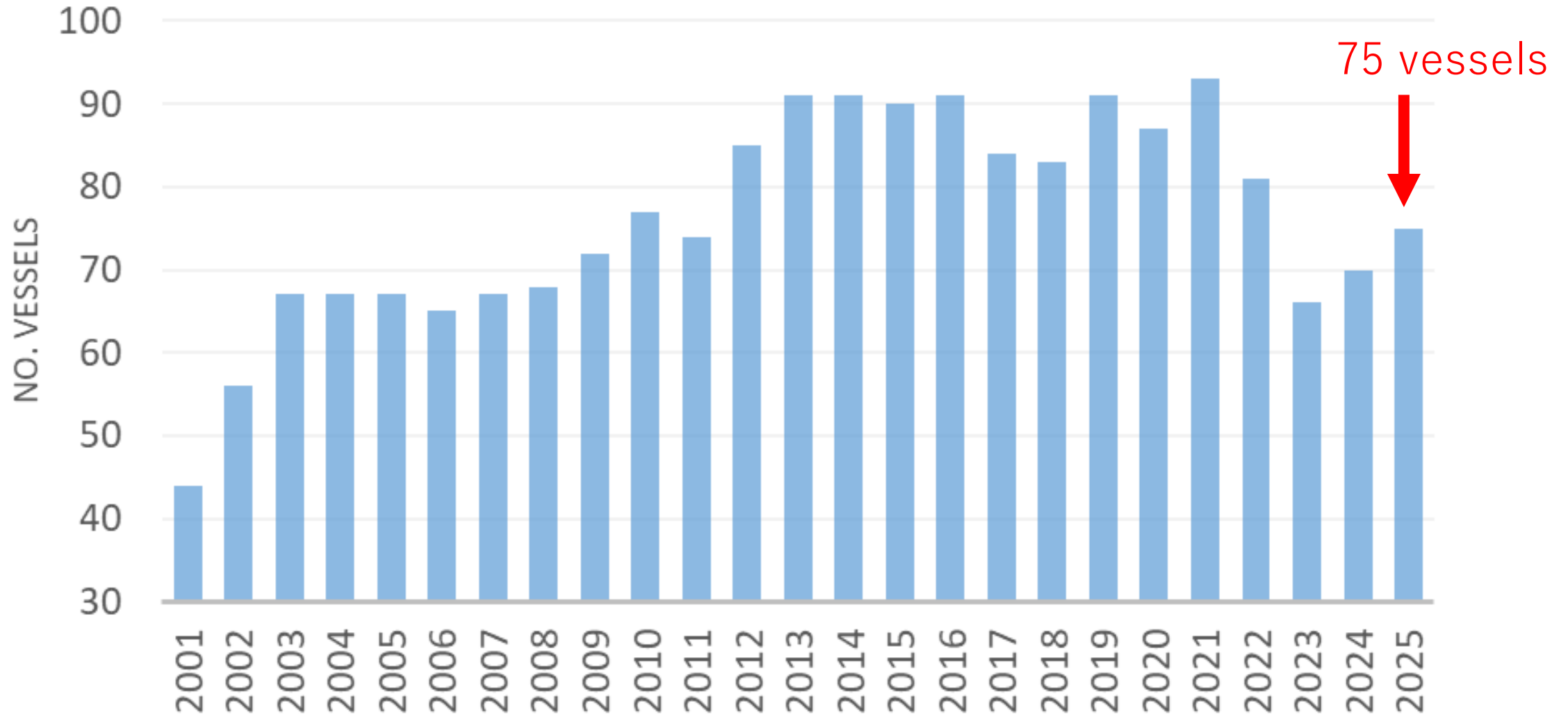


Annual catch series



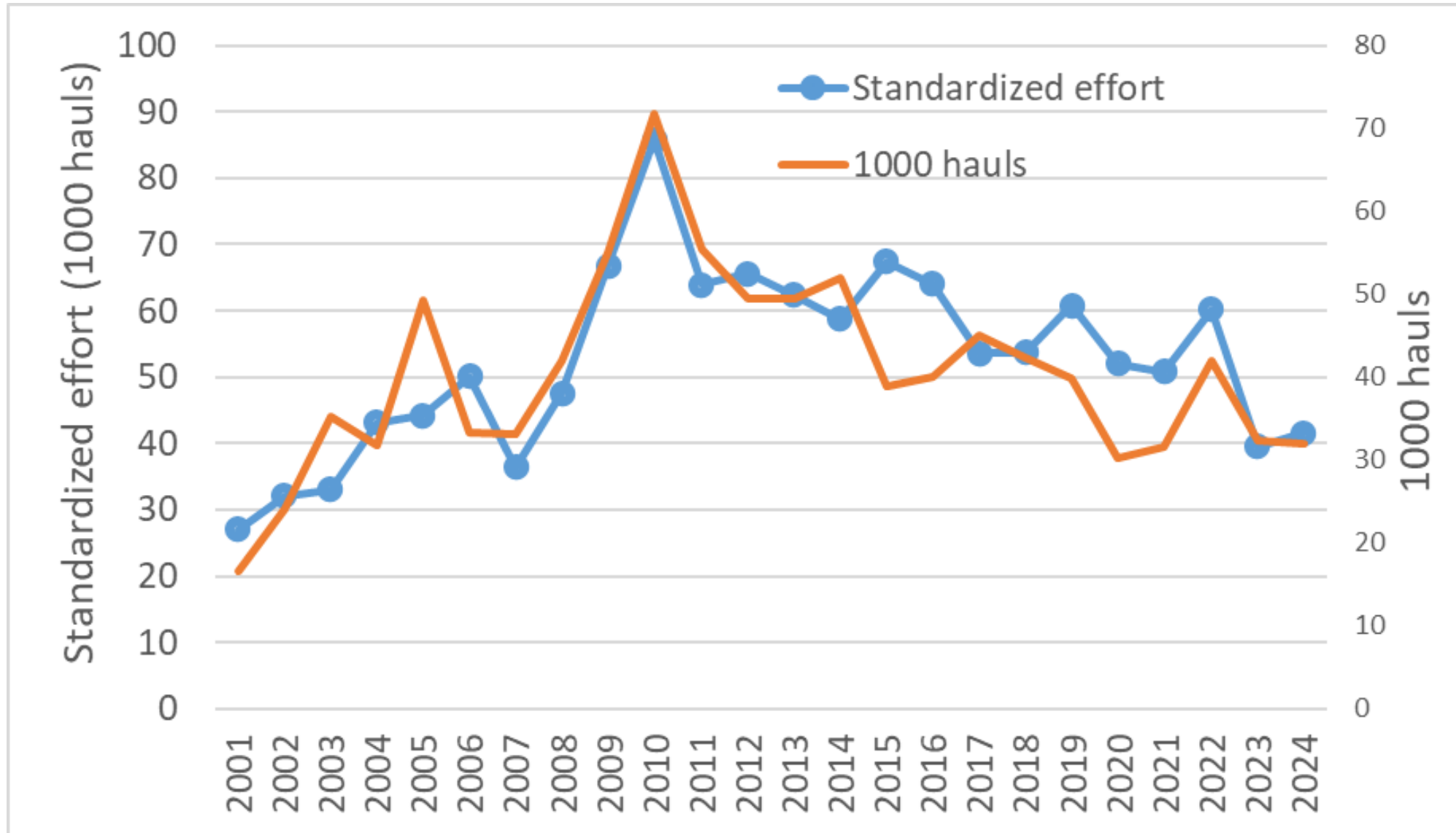
- The historical catch reached its highest in 2014.
- In 2018, the saury catch was around 180,000 tons. Since then, the catch has been decreasing every year until 2021.

Number of vessels



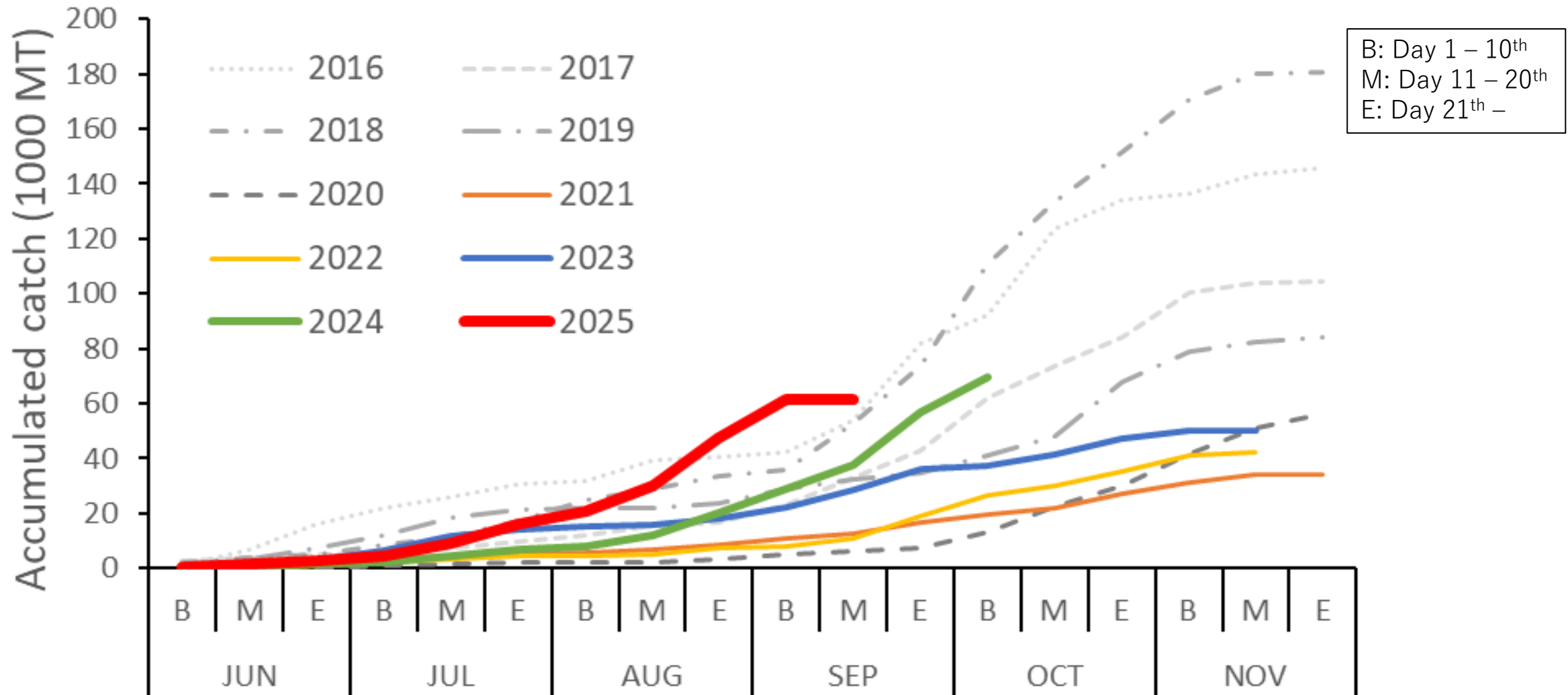
- 75 fishing vessels conducted fishing activities in 2025.

Standardized effort (Catch/stdCPUE)



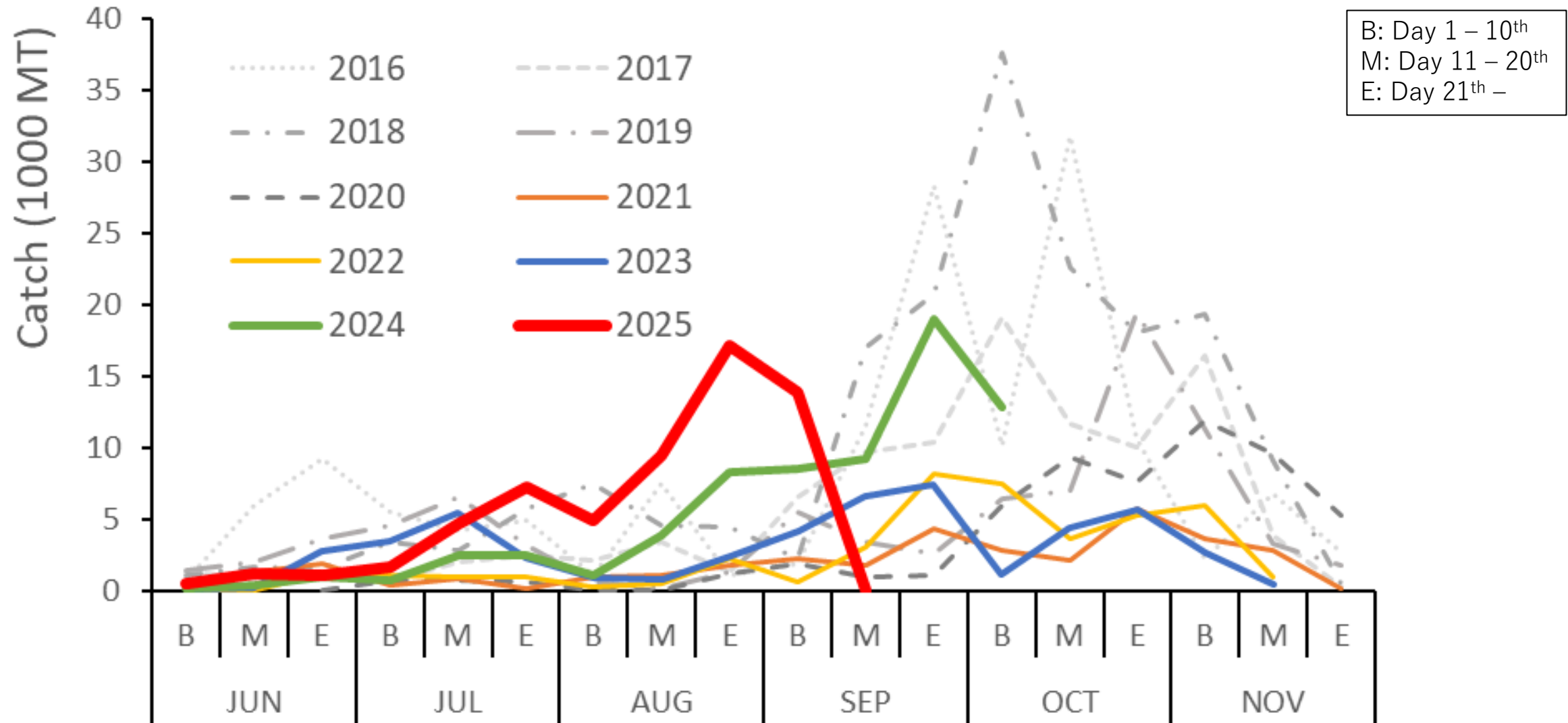
- Standardized effort was 41,608 in 2024.

Accumulated catch

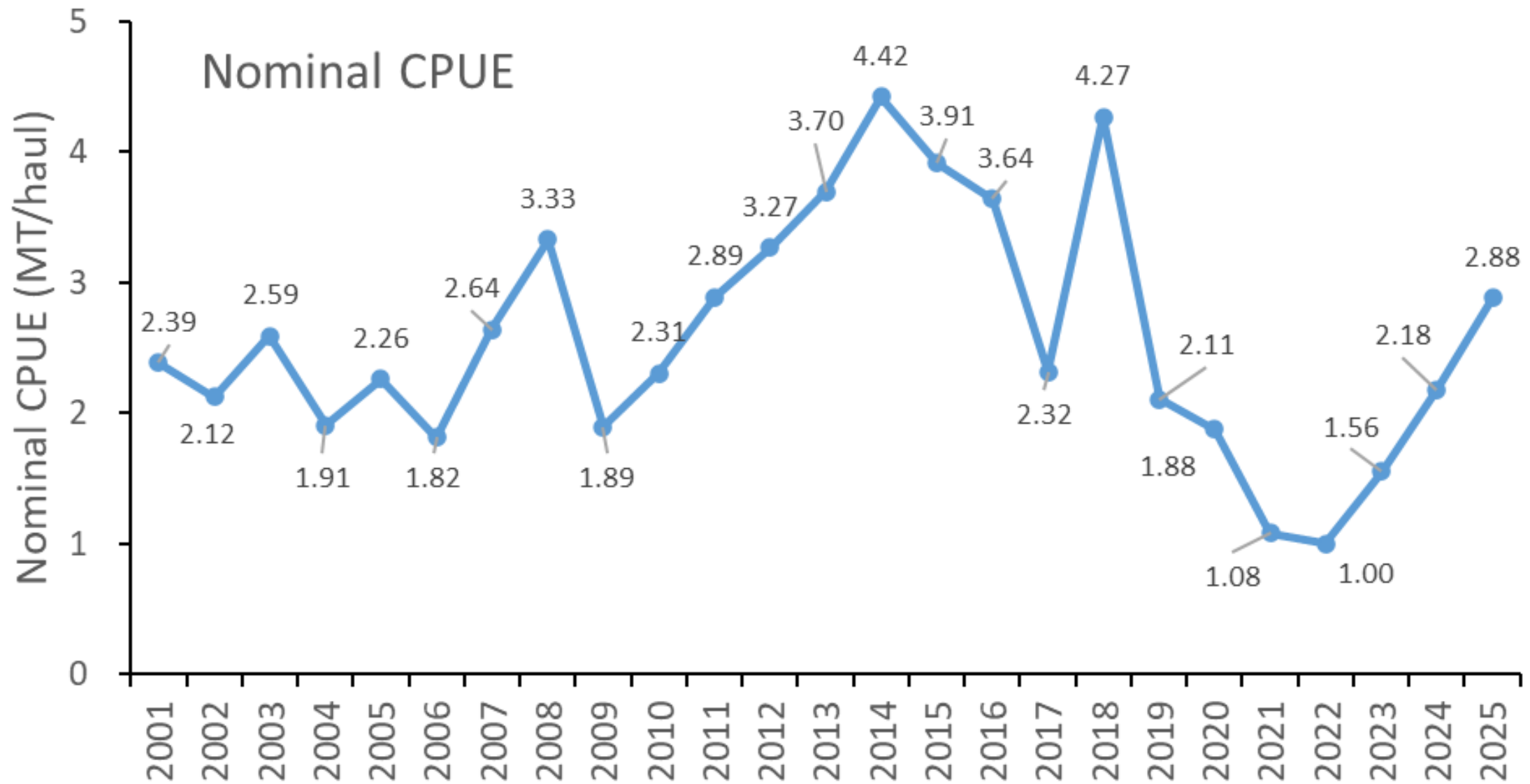


- Accumulated catch by the end of the fishing season was 61,292 tons.
- The 2025 fishing season ended in September after the catch limit was reached.

Seasonal catch

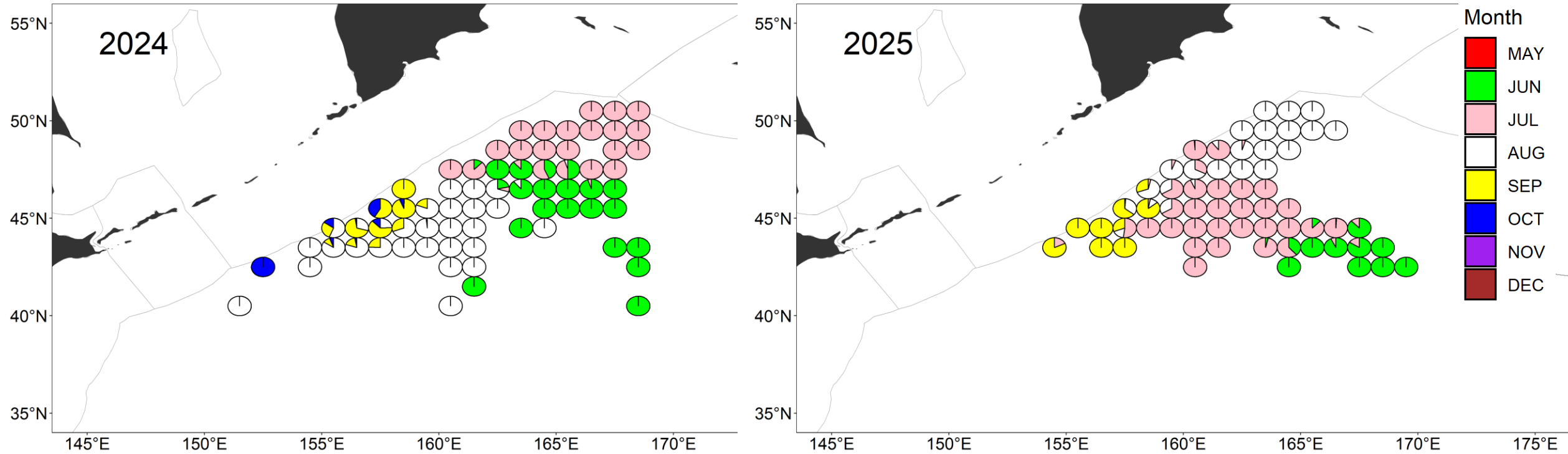


- The catch was higher than in the same period last year.



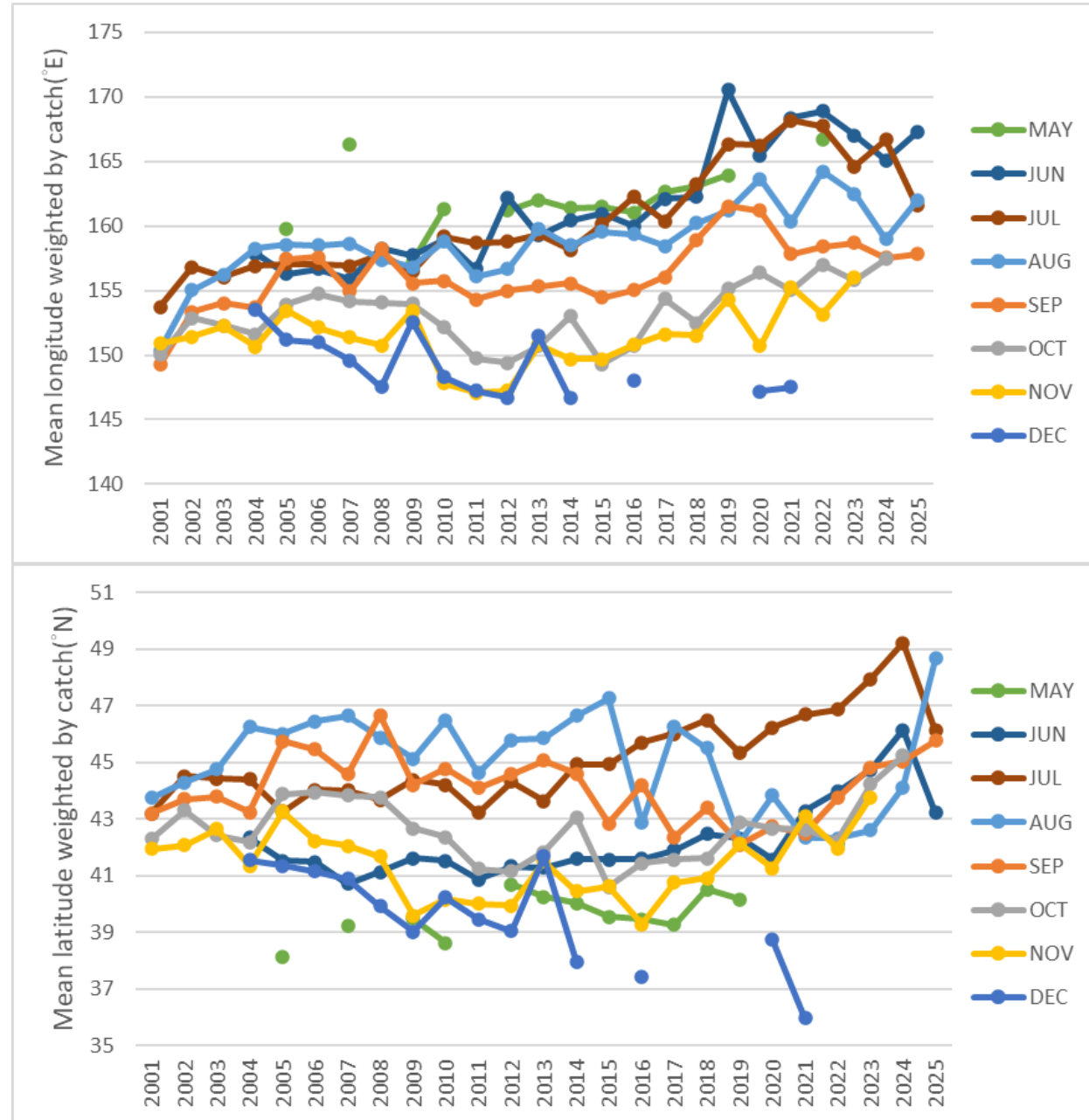
- The nominal CPUE is 2.88 MT / haul, which is higher than that of the same period last year.

Fishing ground



- Compared with the fishing activities distribution in 2024, the fishing grounds in 2025 were observed to be distributed between 42°N and 50°N.

Annual change of fishing ground



Size box compositions (2025)

Specification definition :

S : less than 6 pcs/kg

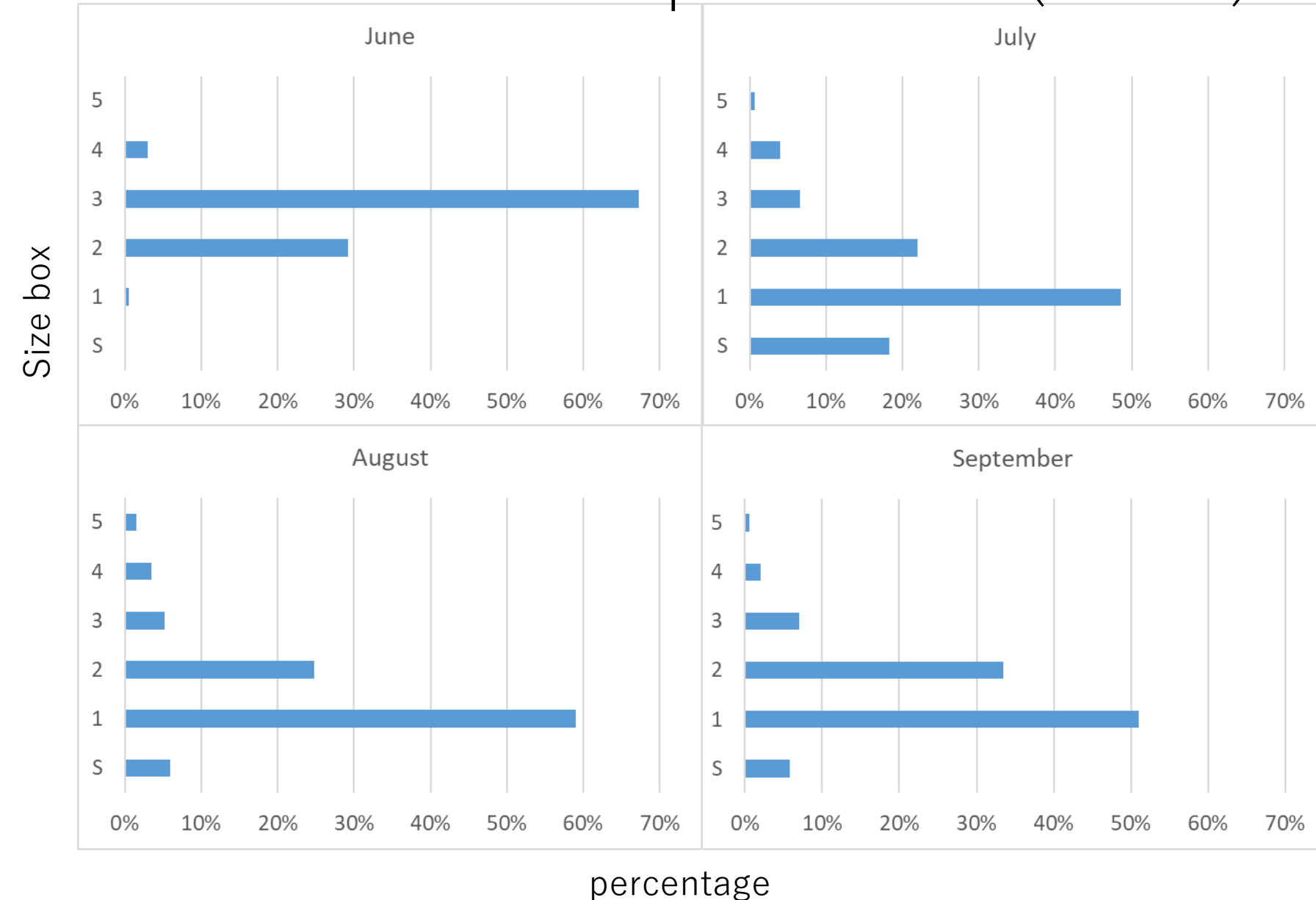
1 : 7~9 pcs/kg

2 : 10~12 pcs/kg

3 : 13~15 pcs/kg

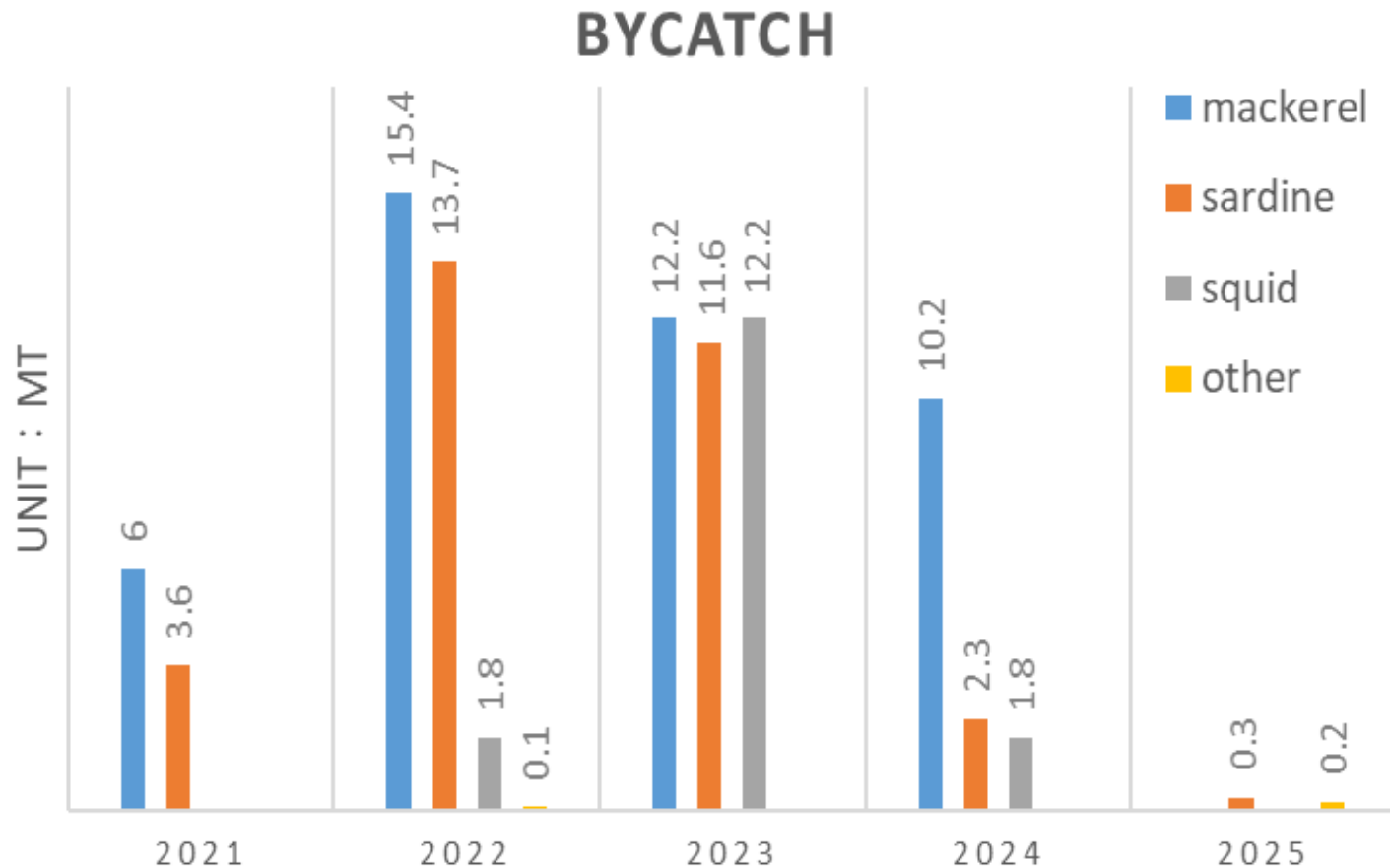
4 : 16~18 pcs/kg

5 : more than 19 pcs/kg



year/species	2025 Bycatch(MT)
mackerel	0
sardine	0.03
squid	0
other	0.02
Total	0.05

Other : epipelagic fish,
e.g. *Sardinella zunasi*



- By the end of the fishing season, bycatch accounted for 0.00008% of the total catch.

Summary

- Accumulated catch by the end of the fishing season was 61,292 tons.
- The nominal CPUE during the period of June to September is about 2.88 MT /haul in 2025 (1.68 MT /haul in 2024, 2.32 MT /haul in 2023).

Thank you for your attention!